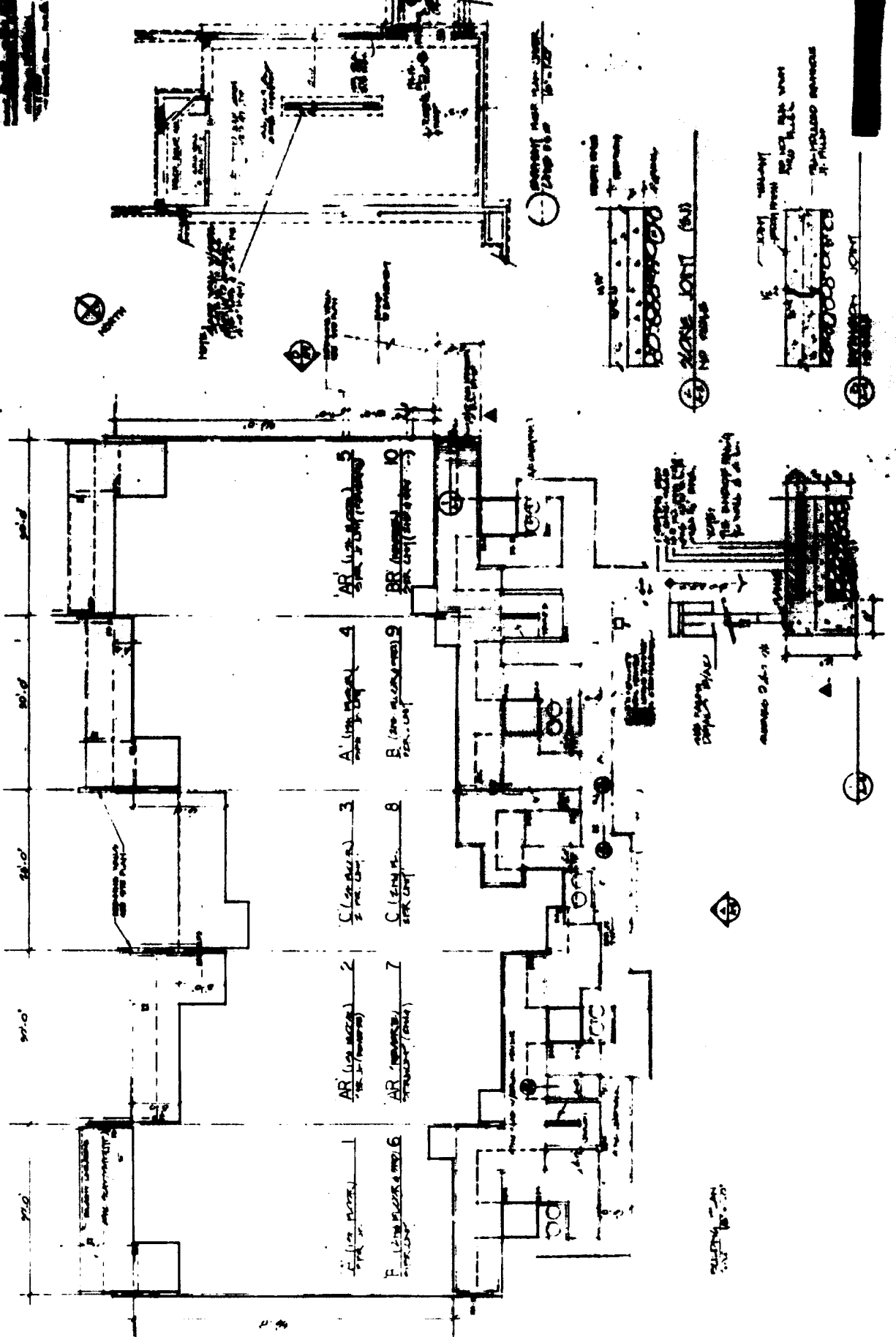


7/27/68
11/15/68
11/15/68
11/15/68
11/15/68

Uth Rain

11/15/68
11/15/68
11/15/68
11/15/68
11/15/68



11/15/68
11/15/68
11/15/68
11/15/68
11/15/68

WALL TYPES

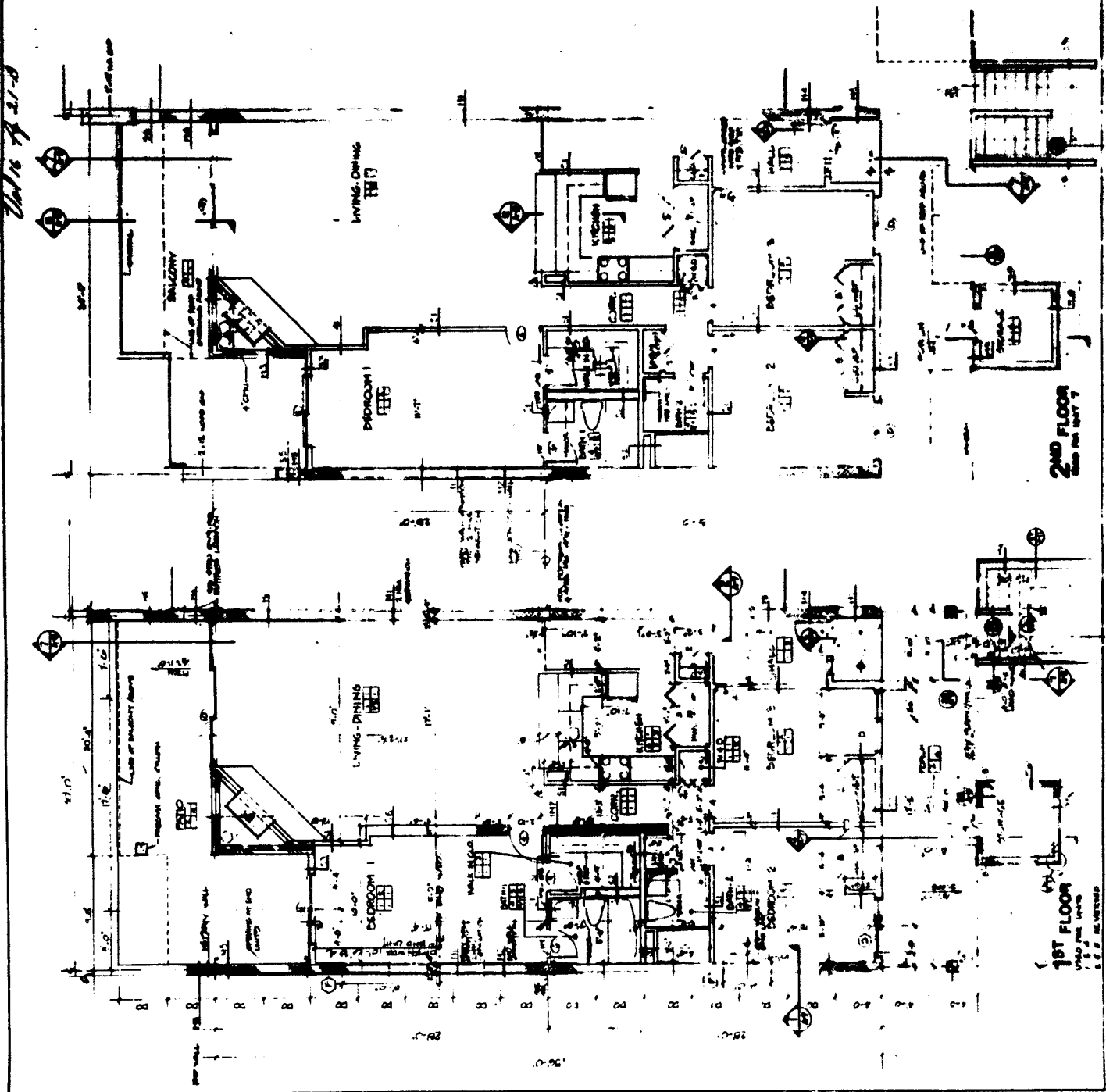
[Symbol]	1. 2" INS. CONCRETE WALL
[Symbol]	2. 4" INS. CONCRETE WALL
[Symbol]	3. 6" INS. CONCRETE WALL
[Symbol]	4. 8" INS. CONCRETE WALL
[Symbol]	5. 10" INS. CONCRETE WALL
[Symbol]	6. 12" INS. CONCRETE WALL
[Symbol]	7. 14" INS. CONCRETE WALL
[Symbol]	8. 16" INS. CONCRETE WALL
[Symbol]	9. 18" INS. CONCRETE WALL
[Symbol]	10. 20" INS. CONCRETE WALL
[Symbol]	11. 22" INS. CONCRETE WALL
[Symbol]	12. 24" INS. CONCRETE WALL
[Symbol]	13. 26" INS. CONCRETE WALL
[Symbol]	14. 28" INS. CONCRETE WALL
[Symbol]	15. 30" INS. CONCRETE WALL
[Symbol]	16. 32" INS. CONCRETE WALL
[Symbol]	17. 34" INS. CONCRETE WALL
[Symbol]	18. 36" INS. CONCRETE WALL
[Symbol]	19. 38" INS. CONCRETE WALL
[Symbol]	20. 40" INS. CONCRETE WALL

WALL LEGEND

[Symbol]	2" INS. UNIT WALL
[Symbol]	4" INS. UNIT WALL
[Symbol]	6" INS. UNIT WALL
[Symbol]	8" INS. UNIT WALL
[Symbol]	10" INS. UNIT WALL
[Symbol]	12" INS. UNIT WALL
[Symbol]	14" INS. UNIT WALL
[Symbol]	16" INS. UNIT WALL
[Symbol]	18" INS. UNIT WALL
[Symbol]	20" INS. UNIT WALL
[Symbol]	22" INS. UNIT WALL
[Symbol]	24" INS. UNIT WALL
[Symbol]	26" INS. UNIT WALL
[Symbol]	28" INS. UNIT WALL
[Symbol]	30" INS. UNIT WALL
[Symbol]	32" INS. UNIT WALL
[Symbol]	34" INS. UNIT WALL
[Symbol]	36" INS. UNIT WALL
[Symbol]	38" INS. UNIT WALL
[Symbol]	40" INS. UNIT WALL

NOTES:

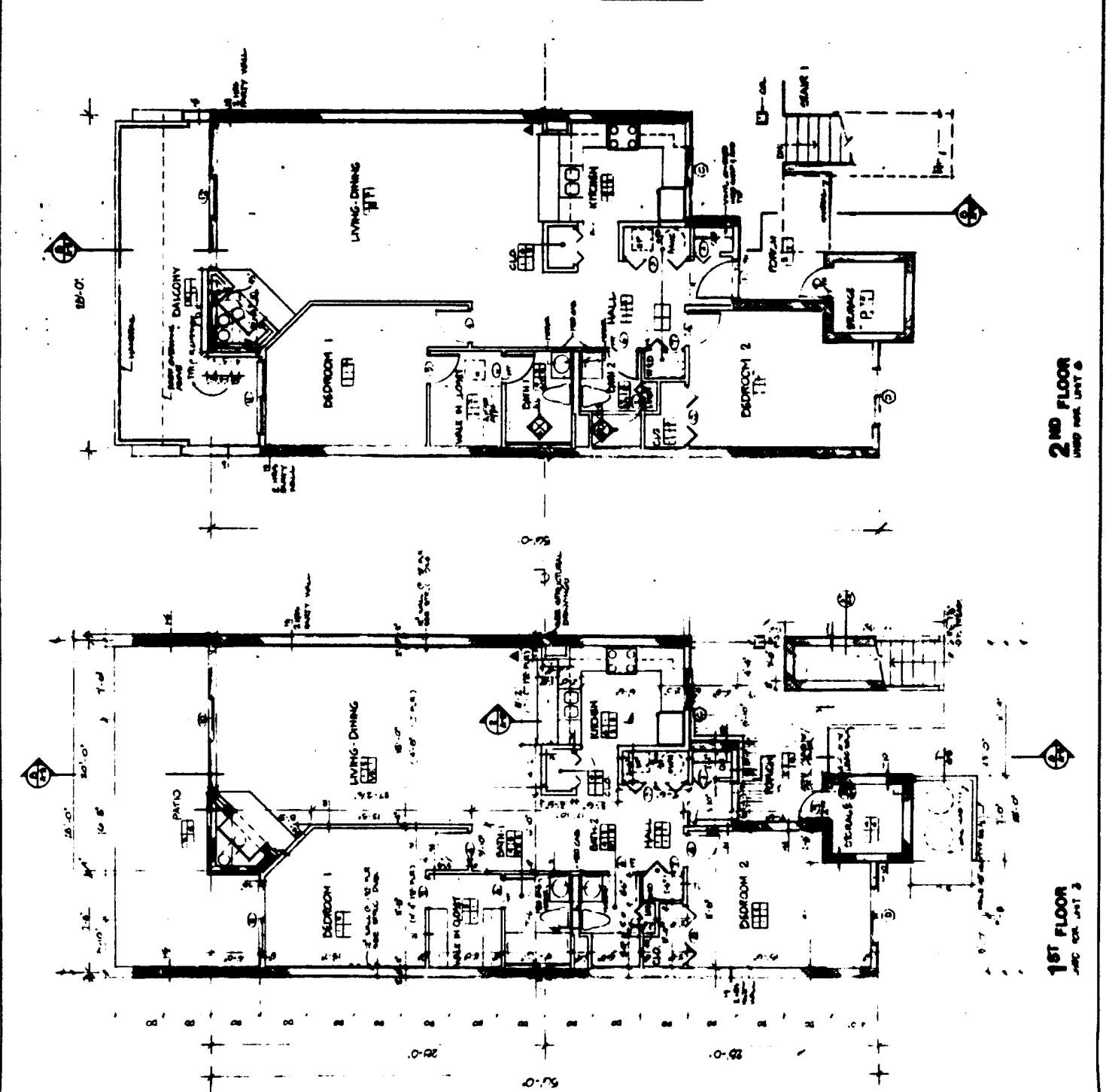
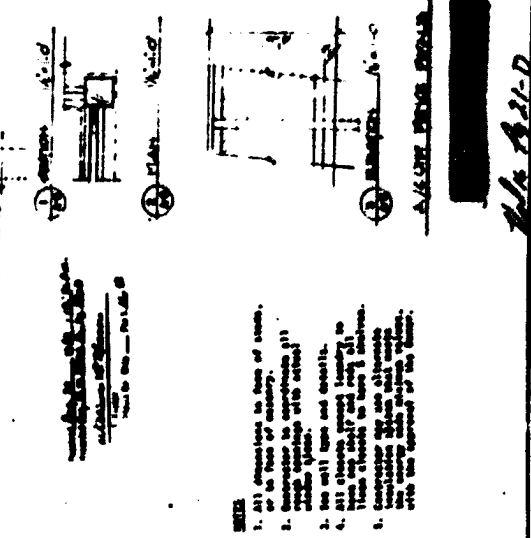
1. All dimensions in feet & inches.
2. Concrete to be cast in place.
3. Formwork to be used for all concrete.
4. All walls to be cast in place.
5. All floors to be cast in place.
6. All floors to be cast in place.
7. All floors to be cast in place.
8. All floors to be cast in place.
9. All floors to be cast in place.
10. All floors to be cast in place.



21'-0"
 WALL TYPE
 TYPE C
 2 RD UNIT
 15' 0"
 10' 0"
 8' 0"
 6' 0"
 4' 0"
 2' 0"
 1' 0"

WALL TYPE		DESCRIPTION
1	1/2" Gypsum Board on Stud	Interior Wall
2	1/2" Gypsum Board on Stud with Acoustic Treatment	Acoustic Wall
3	1/2" Gypsum Board on Stud with Acoustic Treatment and Sound Barrier	Sound Barrier Wall
4	1/2" Gypsum Board on Stud with Acoustic Treatment and Sound Barrier on Outside	Sound Barrier Wall (Exterior)
5	1/2" Gypsum Board on Stud with Acoustic Treatment and Sound Barrier on Inside	Sound Barrier Wall (Interior)
6	1/2" Gypsum Board on Stud with Acoustic Treatment and Sound Barrier on Both Sides	Sound Barrier Wall (Double)
7	1/2" Gypsum Board on Stud with Acoustic Treatment and Sound Barrier on Outside and 1/2" Gypsum Board on Stud on Inside	Sound Barrier Wall (Exterior with Interior Finish)
8	1/2" Gypsum Board on Stud with Acoustic Treatment and Sound Barrier on Inside and 1/2" Gypsum Board on Stud on Outside	Sound Barrier Wall (Interior with Exterior Finish)
9	1/2" Gypsum Board on Stud with Acoustic Treatment and Sound Barrier on Both Sides and 1/2" Gypsum Board on Stud on Outside	Sound Barrier Wall (Double with Exterior Finish)
10	1/2" Gypsum Board on Stud with Acoustic Treatment and Sound Barrier on Both Sides and 1/2" Gypsum Board on Stud on Inside	Sound Barrier Wall (Double with Interior Finish)
11	1/2" Gypsum Board on Stud with Acoustic Treatment and Sound Barrier on Both Sides and 1/2" Gypsum Board on Stud on Both Sides	Sound Barrier Wall (Double with Both Sides Finish)

WALL LEGEND	
(Symbol)	1/2" Gypsum Board on Stud
(Symbol)	1/2" Gypsum Board on Stud with Acoustic Treatment
(Symbol)	Sound Barrier
(Symbol)	1/2" Gypsum Board on Stud
(Symbol)	1/2" Gypsum Board on Stud on Outside

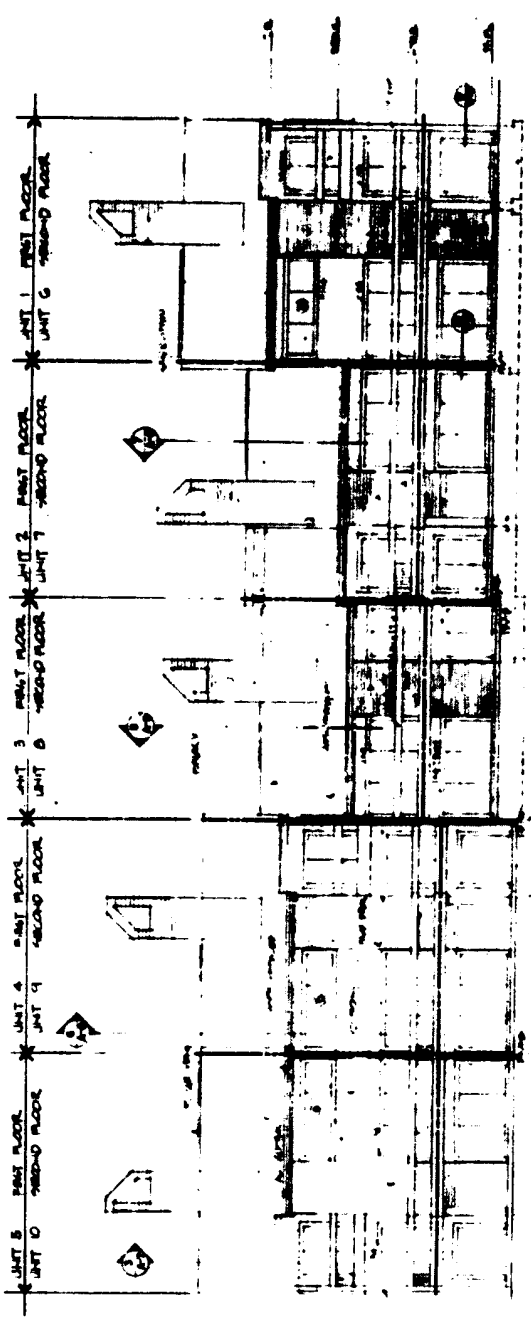
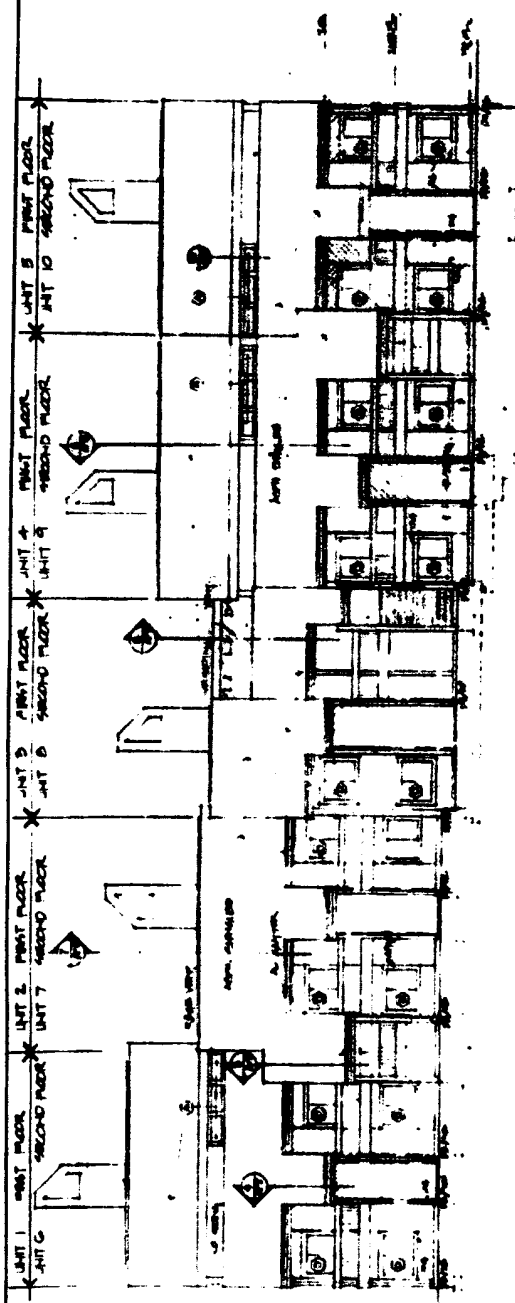


68
 ARCHITECT
 1000 W. BROADWAY
 SUITE 200
 DENVER, CO 80202
 TEL: 303.733.1111
 FAX: 303.733.1112

PERMIT NO. 111
 PROJECT NO.
 COLUMBIA
 ISLAND
 MARINA
 BUILDING
 ELEVATIONS
 SHEET NO. 111
 DATE 11/11/00
 SCALE
 A.C.

21 E
 2016 P. 11.1

2016 P. 11.1
 11/11/00

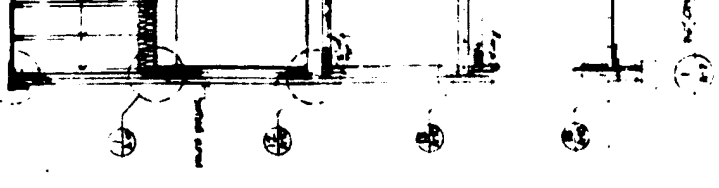
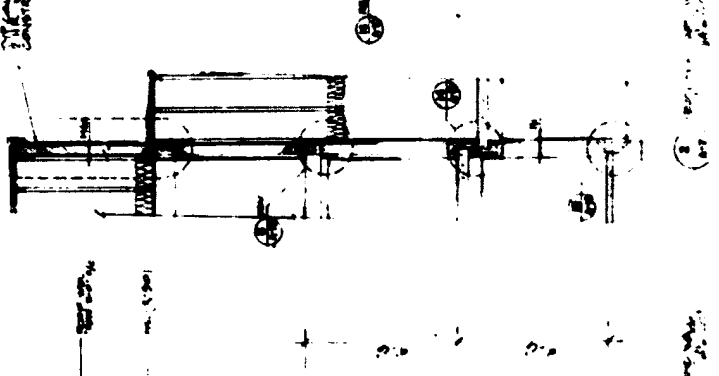
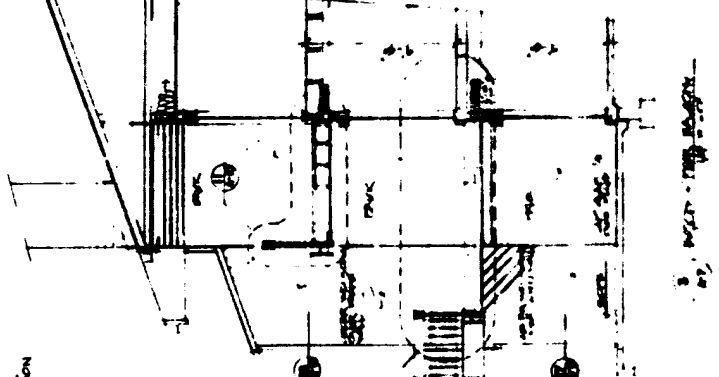
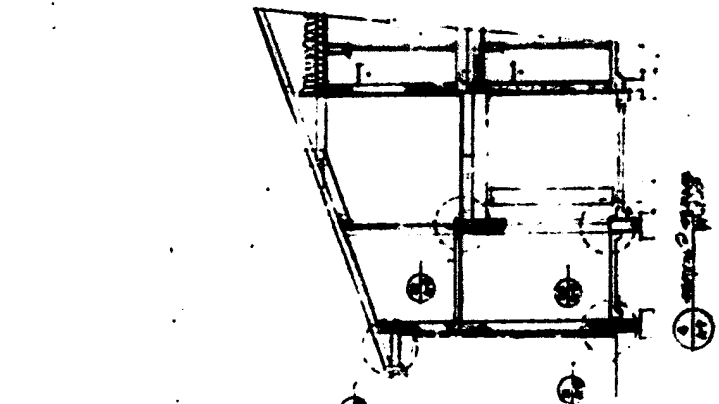
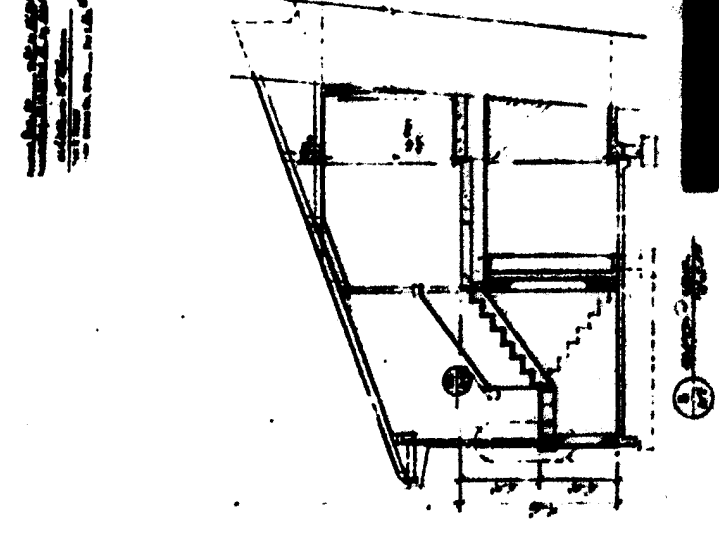
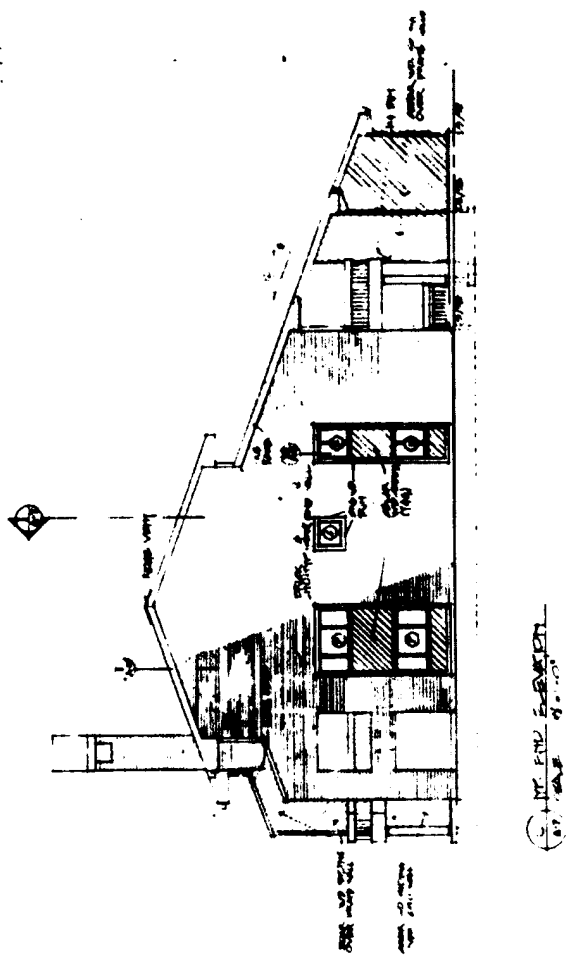
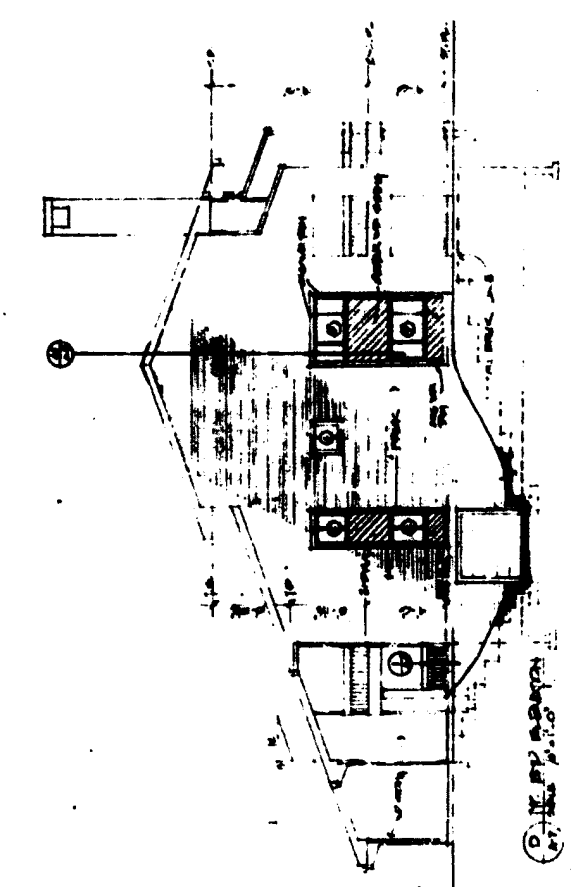


A. W. G. ARCHITECTS
 1000 W. BROADWAY
 SUITE 200
 DENVER, CO 80202

11/11/00

1. 2. 3. 4. 5. 6. 7. 8. 9. 10. 11. 12. 13. 14. 15. 16. 17. 18. 19. 20. 21. 22. 23. 24. 25. 26. 27. 28. 29. 30. 31. 32. 33. 34. 35. 36. 37. 38. 39. 40. 41. 42. 43. 44. 45. 46. 47. 48. 49. 50. 51. 52. 53. 54. 55. 56. 57. 58. 59. 60. 61. 62. 63. 64. 65. 66. 67. 68. 69. 70. 71. 72. 73. 74. 75. 76. 77. 78. 79. 80. 81. 82. 83. 84. 85. 86. 87. 88. 89. 90. 91. 92. 93. 94. 95. 96. 97. 98. 99. 100.

212
 Val N. 4. 21-F

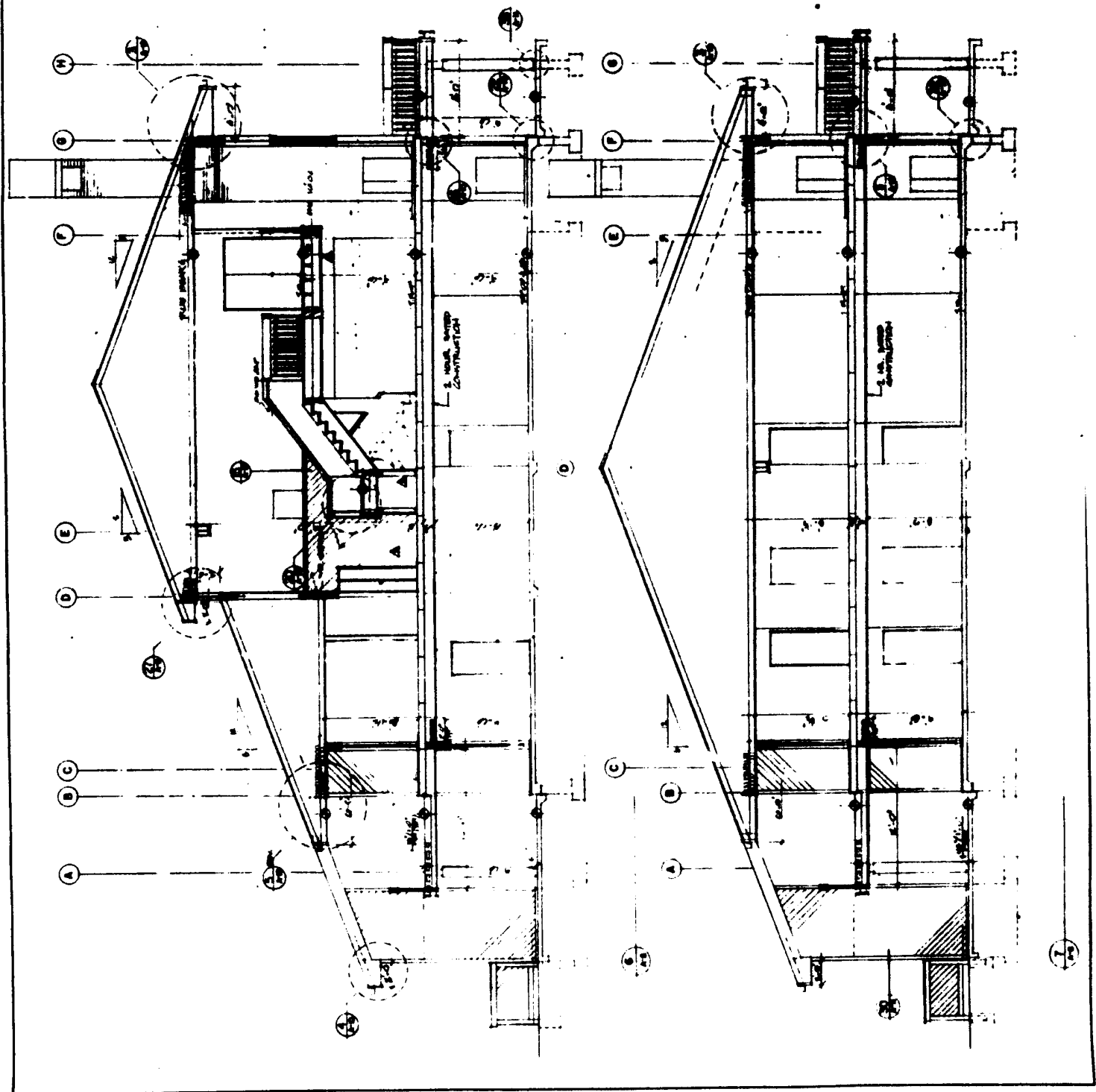


8
NO. 100
NO. 101
NO. 102
NO. 103
NO. 104
NO. 105
NO. 106
NO. 107
NO. 108
NO. 109
NO. 110
NO. 111
NO. 112
NO. 113
NO. 114
NO. 115
NO. 116
NO. 117
NO. 118
NO. 119
NO. 120

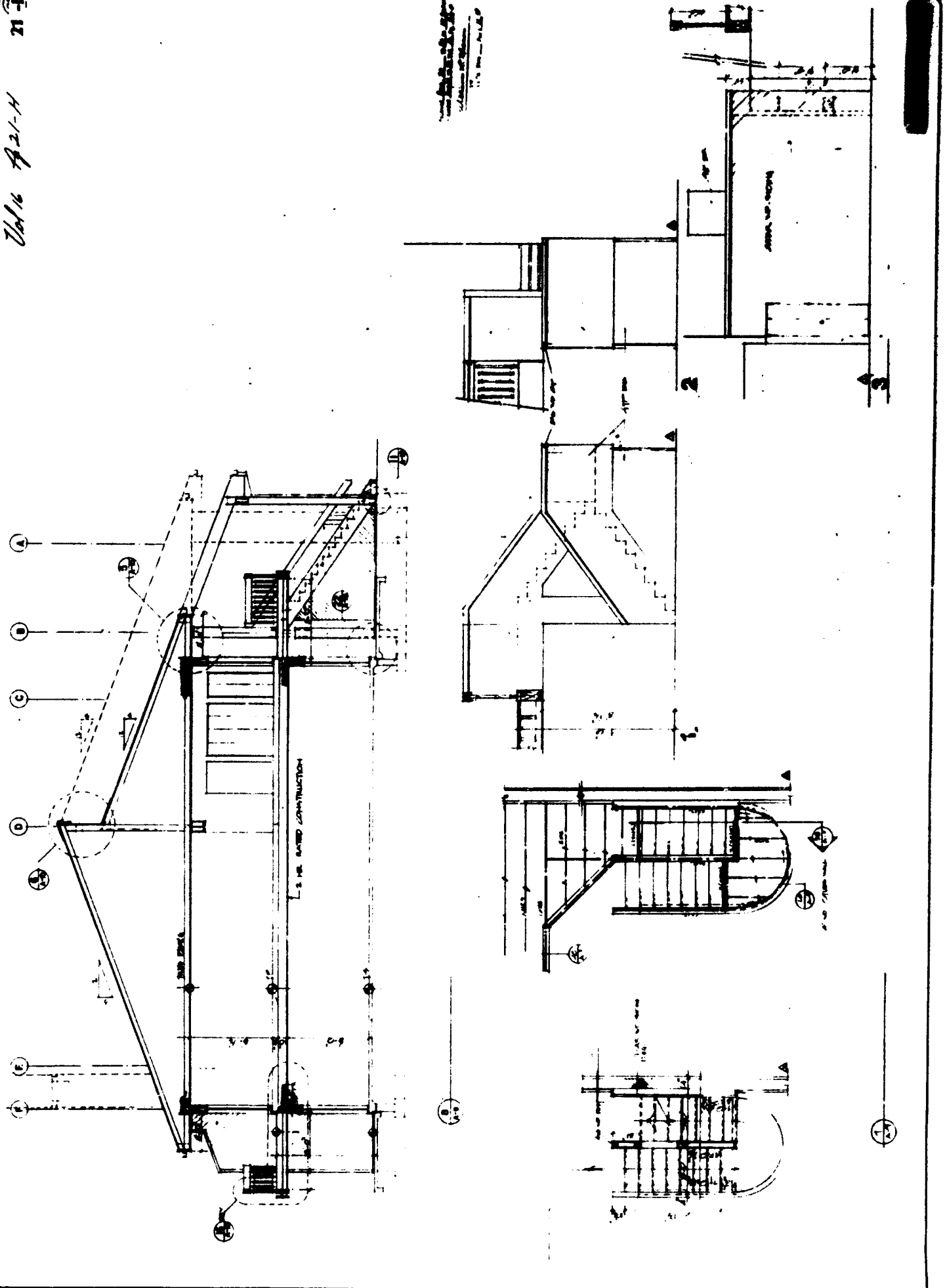
SEN. RESPONSE 1-2-77
COUNCIL
BLAND
MEMBER

5-11
2/10 P. 21-C

1. 1/2" DIA. STEEL
2. 1/2" DIA. STEEL
3. 1/2" DIA. STEEL
4. 1/2" DIA. STEEL
5. 1/2" DIA. STEEL
6. 1/2" DIA. STEEL
7. 1/2" DIA. STEEL
8. 1/2" DIA. STEEL
9. 1/2" DIA. STEEL
10. 1/2" DIA. STEEL
11. 1/2" DIA. STEEL
12. 1/2" DIA. STEEL
13. 1/2" DIA. STEEL
14. 1/2" DIA. STEEL
15. 1/2" DIA. STEEL
16. 1/2" DIA. STEEL
17. 1/2" DIA. STEEL
18. 1/2" DIA. STEEL
19. 1/2" DIA. STEEL
20. 1/2" DIA. STEEL



Vol 16 A 21-11 21 31



1:100
1:200
1:500



MINISTRY OF WORKS AND CONSTRUCTION
PUBLIC WORKS DEPARTMENT
CANTON
ISLAND
HONG KONG

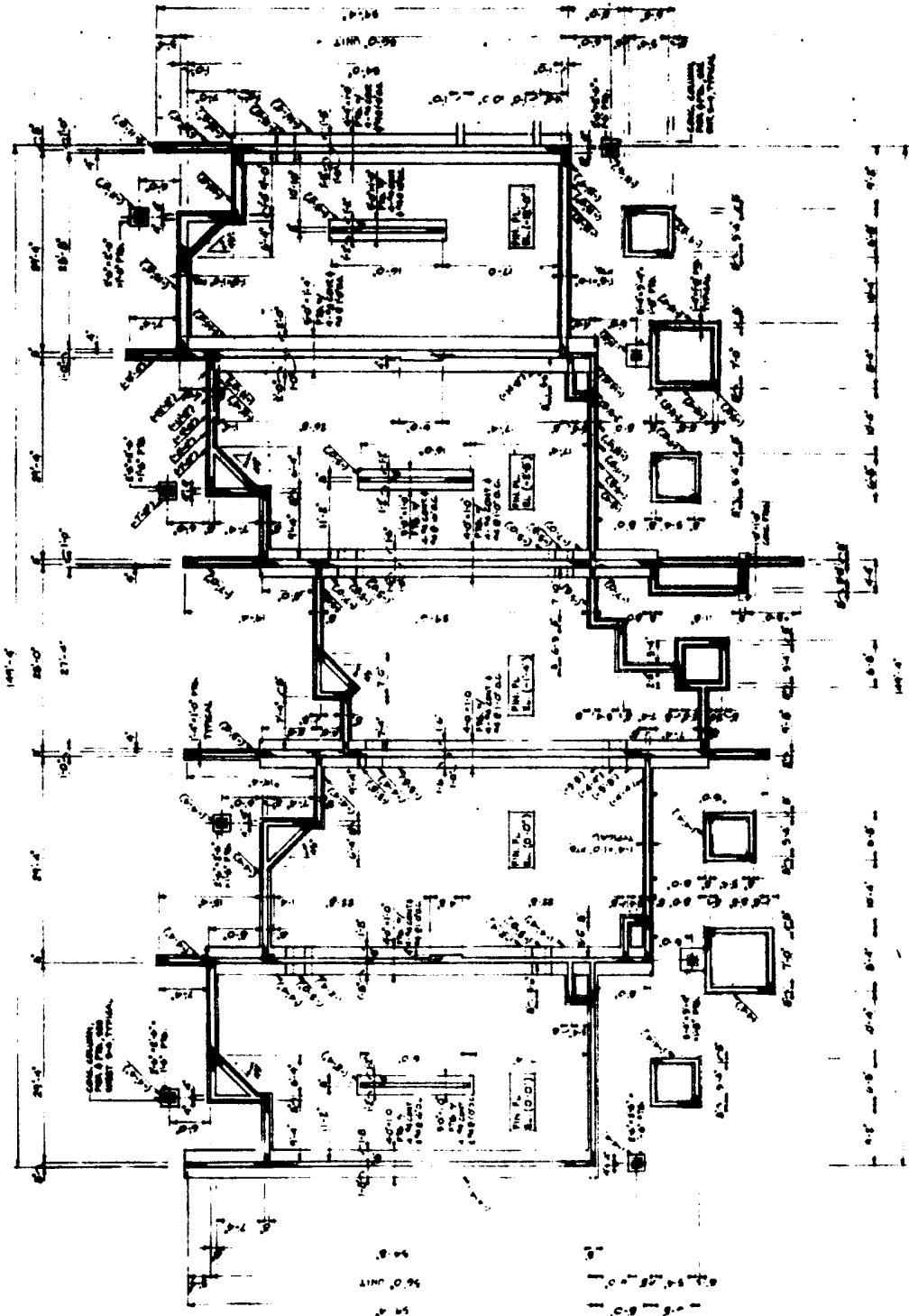
FOUNDATION
PLAN

SCALE
1:100
1:200
1:500



Fig. 1

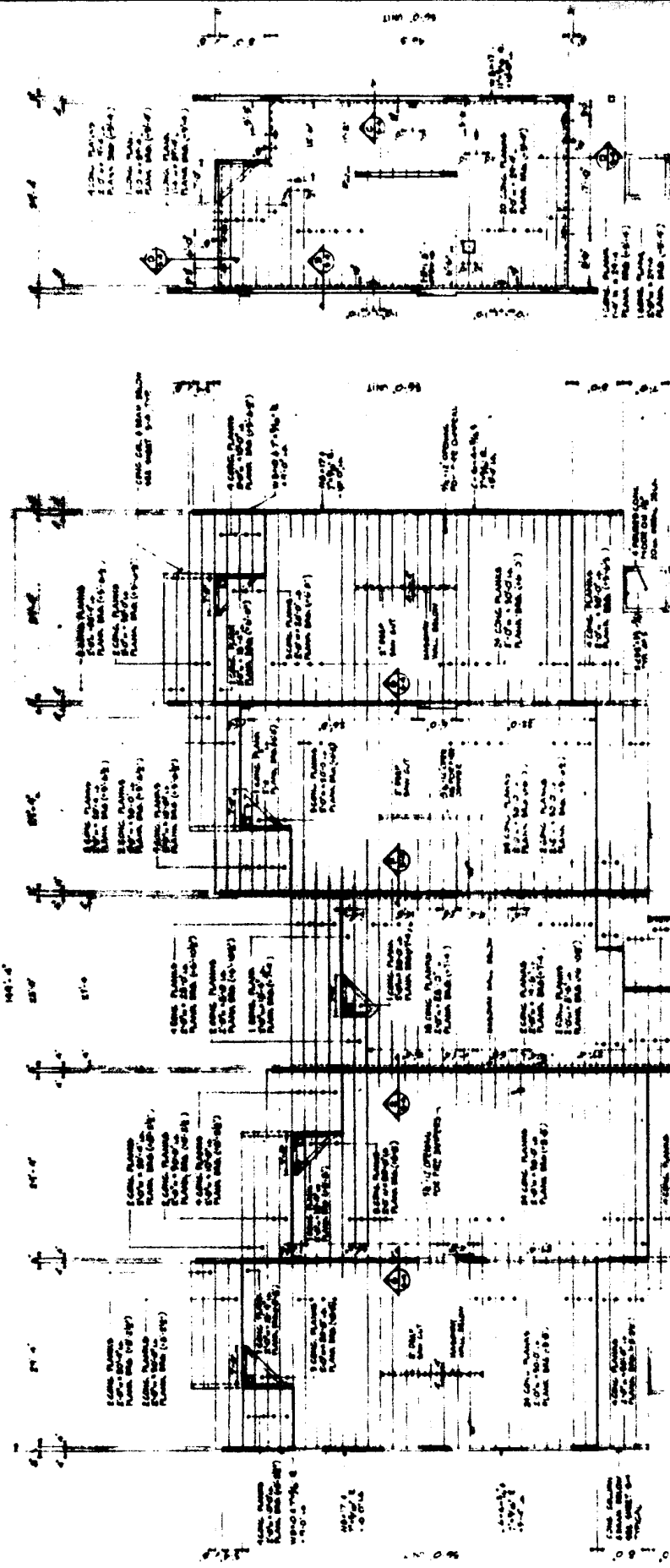
Vol 16 of 21-1



FOUNDATION PLAN
SCALE 1:100

NOTE:
1. DIMENSIONS ARE (0-0) UNLESS OTHERWISE STATED TO BE ABOVE SEA LEVEL.
2. ALL FOUNDATION WORK IS TO BE DONE IN ACCORDANCE WITH THE SPECIFICATIONS OF THE DEPARTMENT OF PUBLIC WORKS.

12/16/85



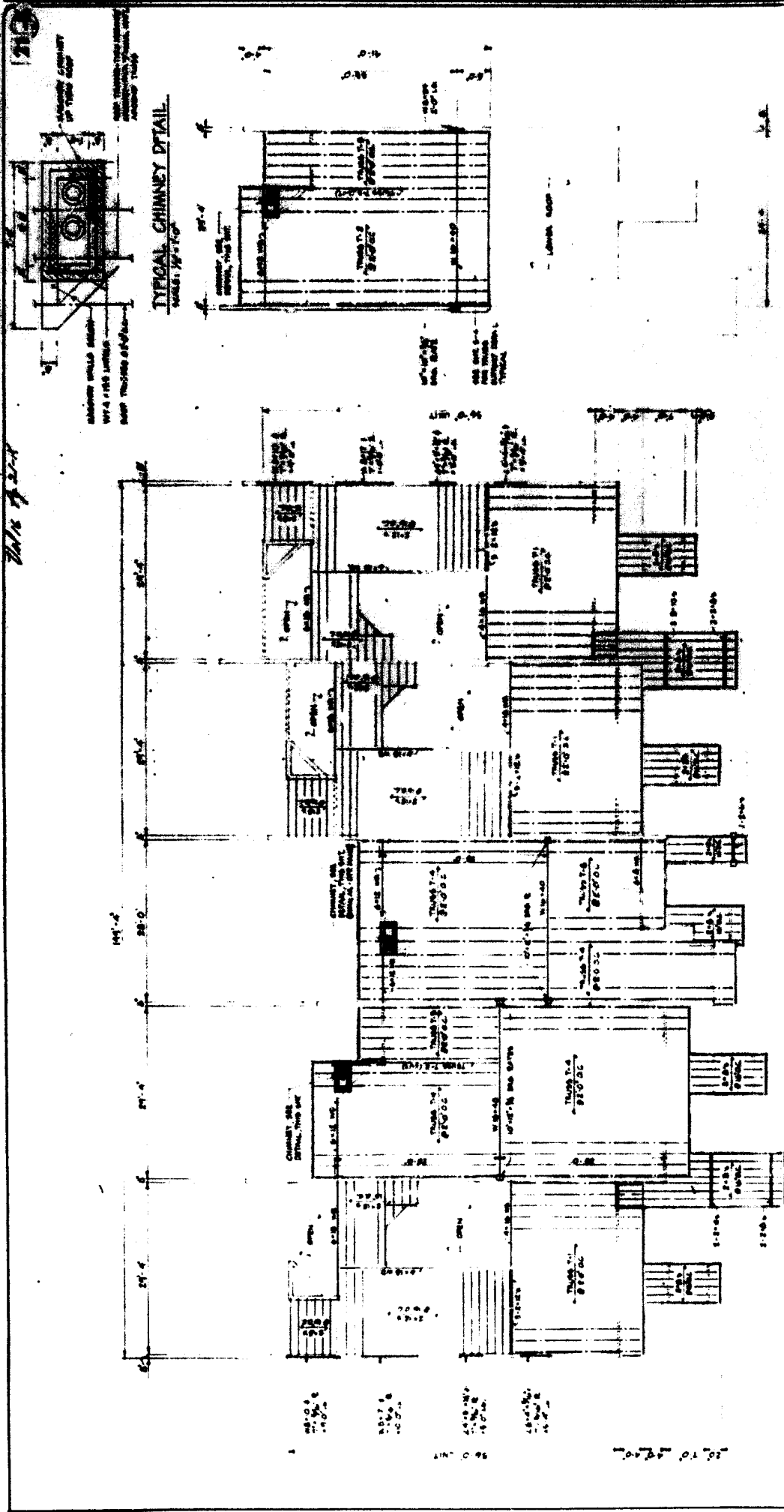
FIRST FLOOR
FRAMING PLAN
SCALE: 1/8"=1'-0"

SECOND FLOOR FRAMING PLAN
SCALE: 1/8"=1'-0"

NOTE:
 1. ALL DIMENSIONS TO FACE UNLESS OTHERWISE NOTED.
 2. ALL DIMENSIONS TO BE CHECKED WITH THE ARCHITECT'S RECORD DRAWINGS.
 3. ALL DIMENSIONS TO BE CHECKED WITH THE ARCHITECT'S RECORD DRAWINGS.



FLOOR FRAMING PLANS



THIRD FLOOR & LOWER ROOF FRAMING PLAN
 SCALE: 1/8" = 1'-0"

NOTE:
 1. SEE INT 6-4 FOR ROOF TRUSS DETAILS

UPPER ROOF FRAMING PLAN
 SCALE: 1/8" = 1'-0"
 (SEE INT 6-4 FOR TRUSS UNITS DETAILS)

SEE INT 6-4 FOR TRUSS UNITS DETAILS

TYPICAL CHIMNEY DETAIL
 SCALE: 1/8" = 1'-0"

1219

10/18/75