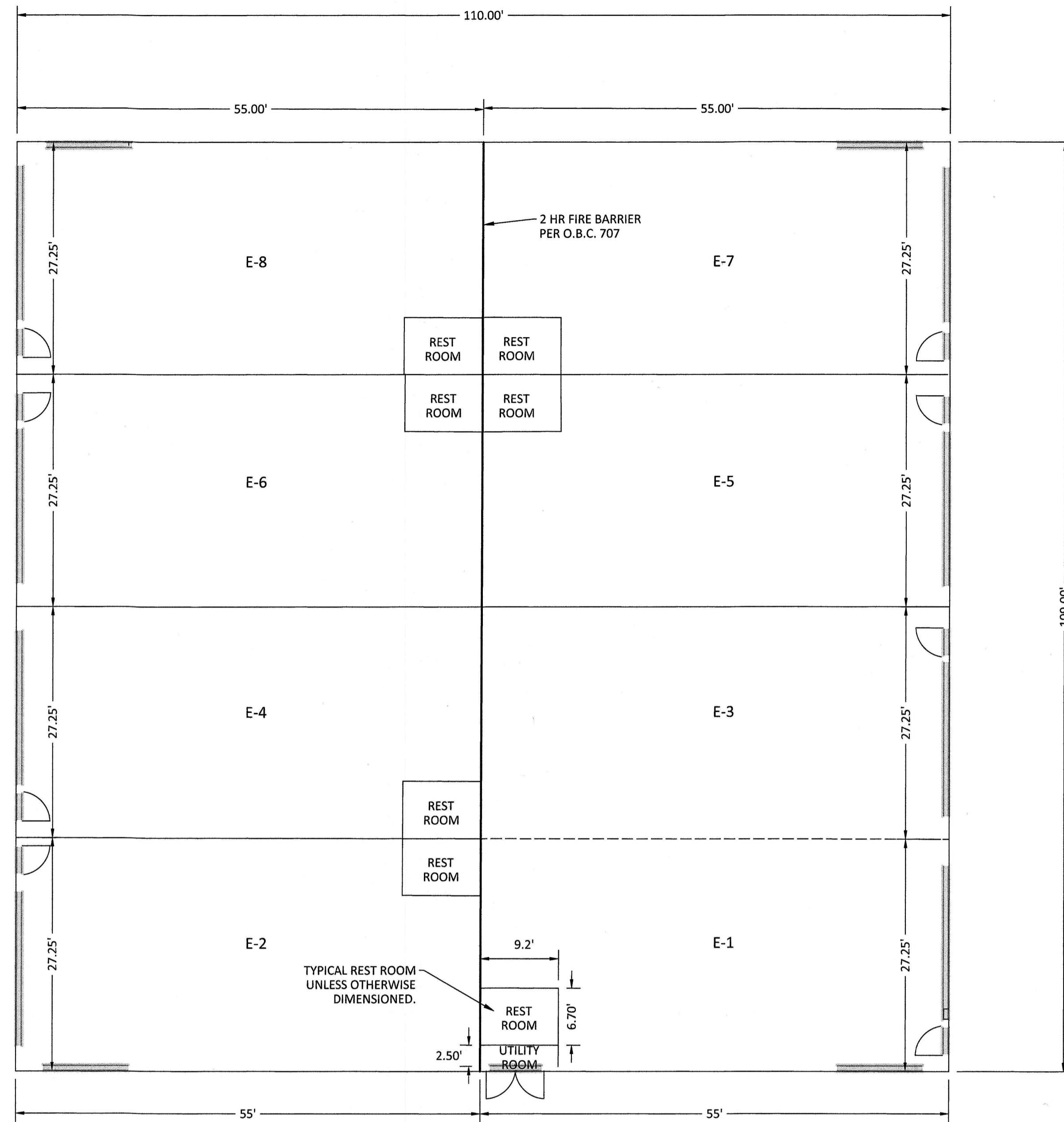
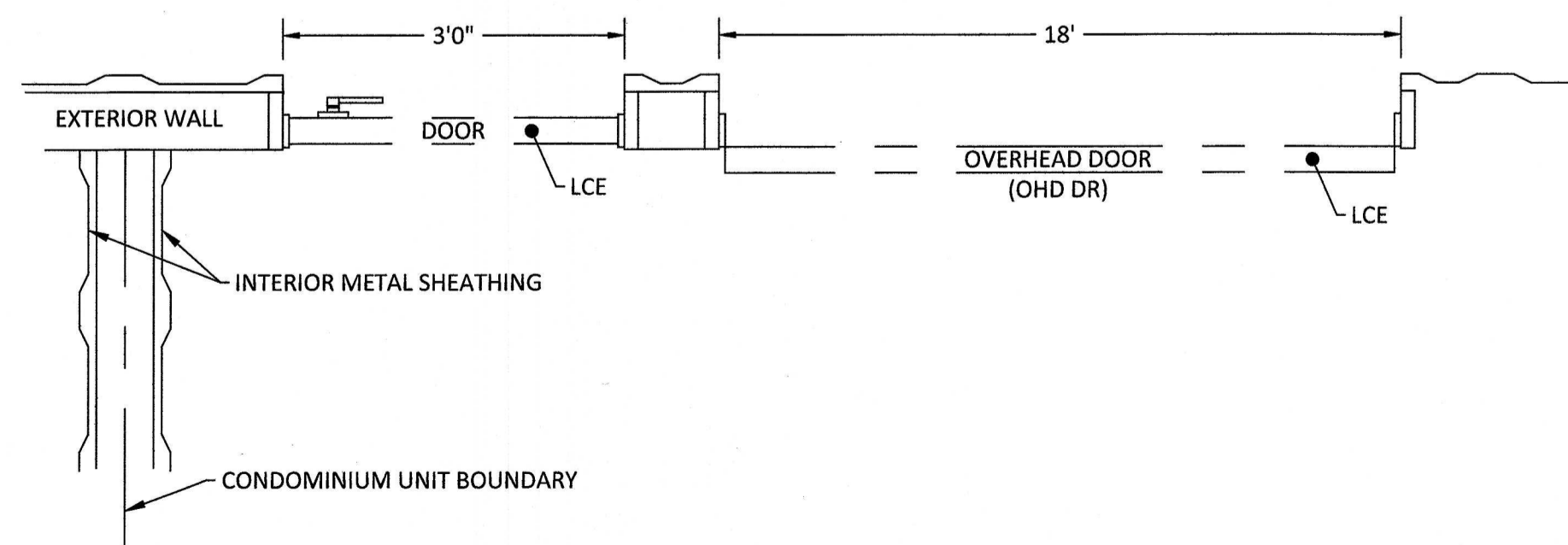


PLOTTED: Jul 29, 2024 - 2:35pm  
 DRAWING: M:\20116 (Catawba Island Club - 2020 General Services Agreement)\Catawba Boatyard Ventures\_L1-EB\_AMEND 4\SURVEY\DWG\20116 Amend 4.dwg: Page 2

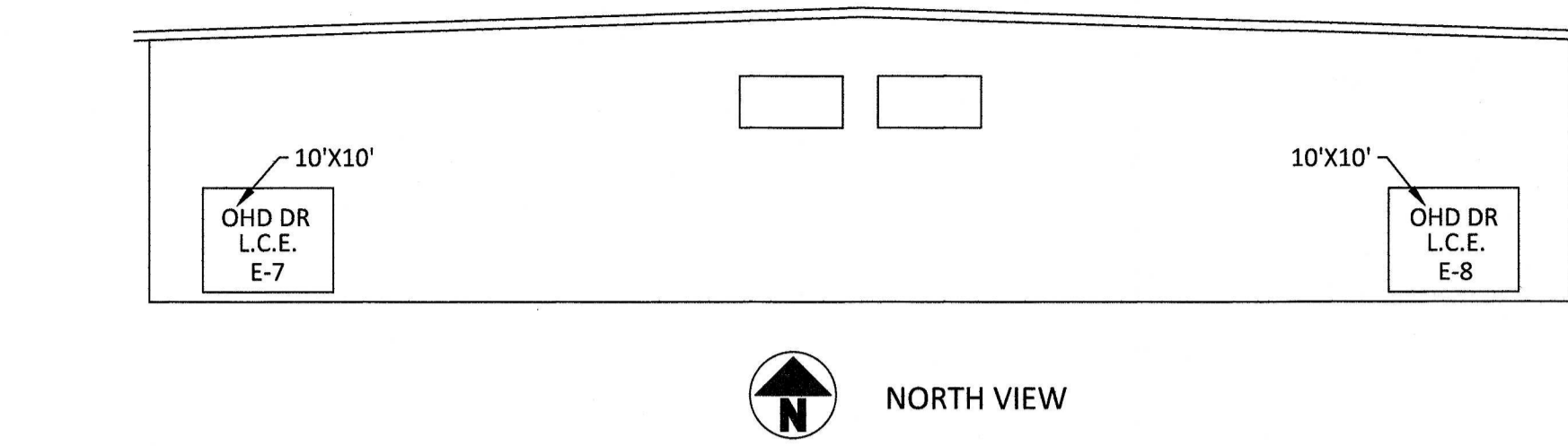


FLOOR PLAN

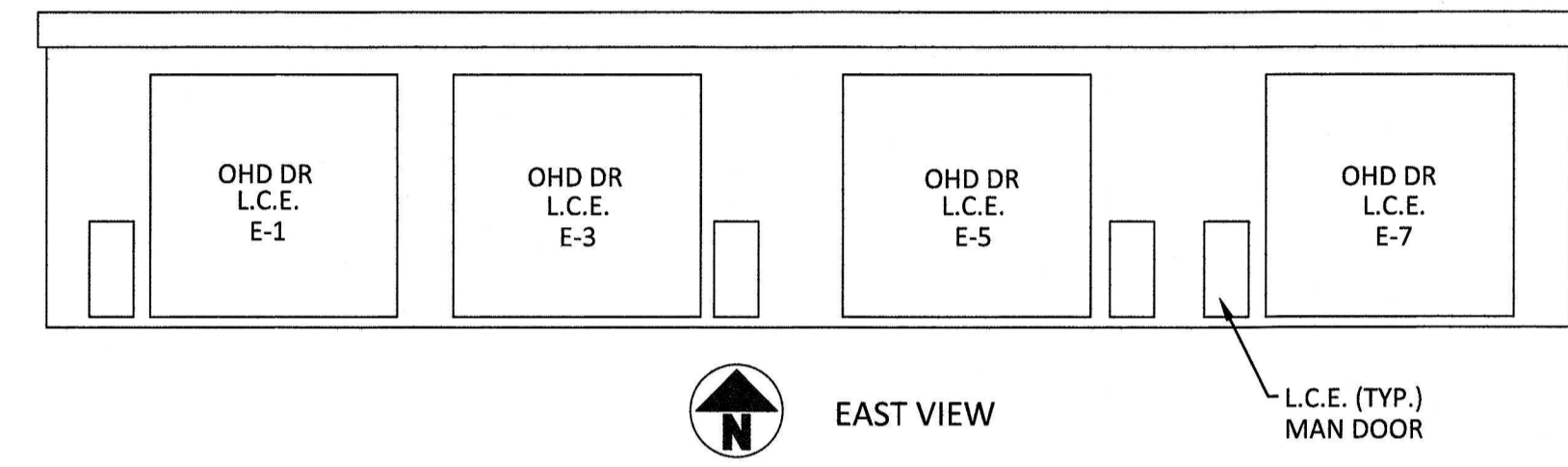


\*NOTE: HALF INTERIOR WALL GOES WITH EACH UNIT. (TYP.)

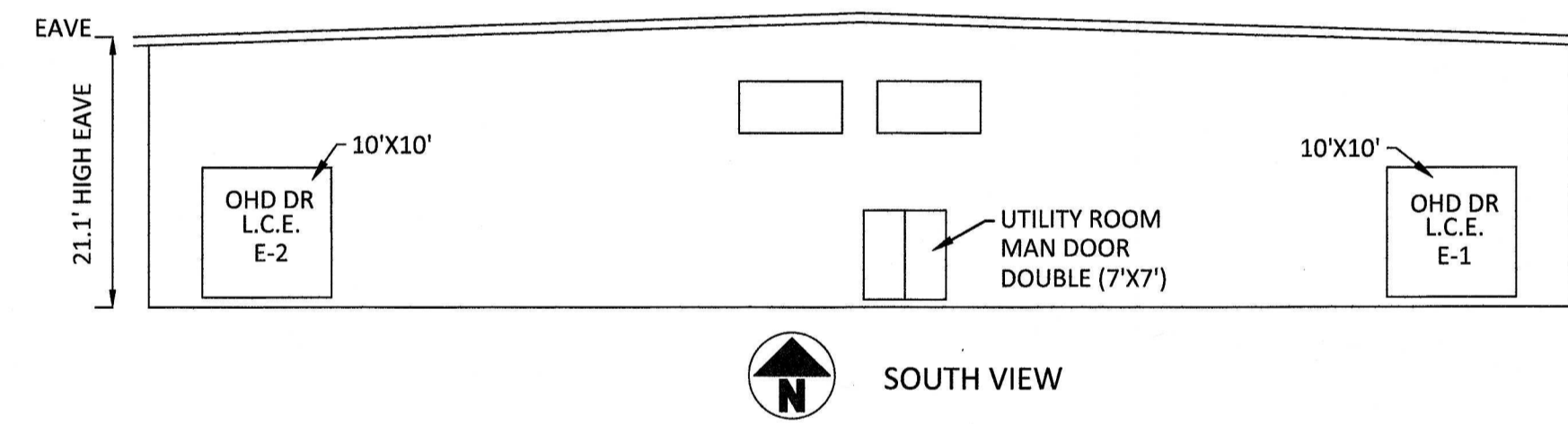
DETAIL: N.T.S.



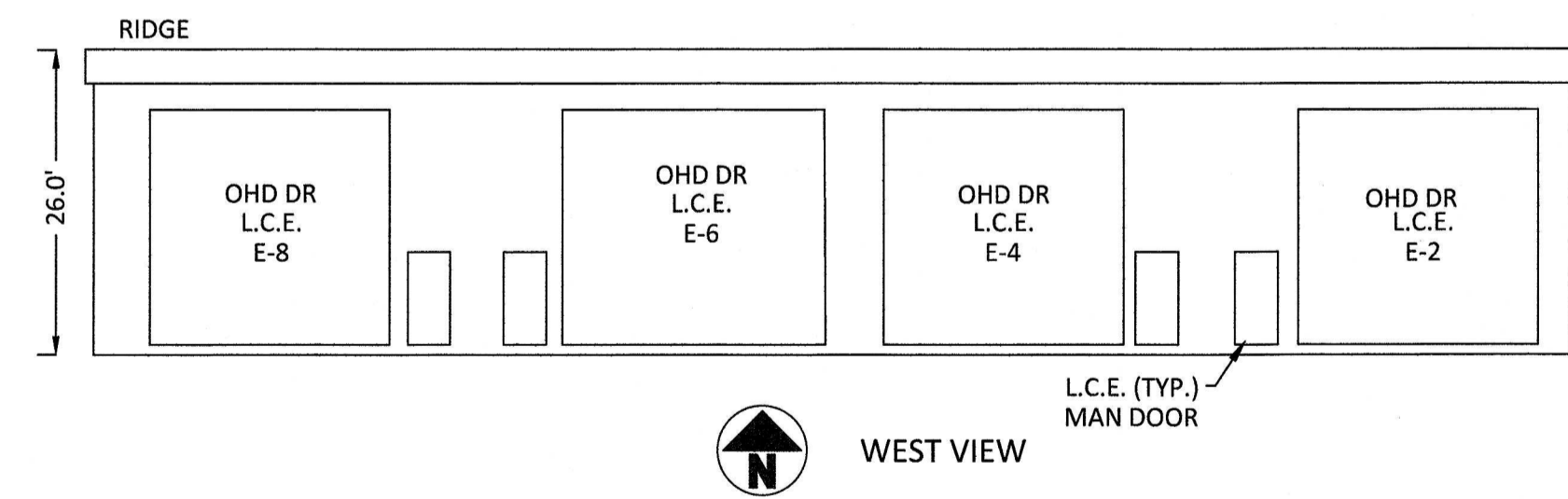
NORTH VIEW



EAST VIEW



SOUTH VIEW



WEST VIEW

\*NOTE: ALL OVERHEAD DOORS (OHD DR) ARE 18'X18' UNLESS OTHERWISE NOTED.  
 \*NOTE: ALL MAN DOORS ARE 3' X 7' UNLESS OTHERWISE NOTED.  
 OHD DR = OVERHEAD DOOR

NO	REVISION	DATE
9		
8		
7		
6		
5		
4		
3		
2		
1		

**DGL**  
 CONSULTING ENGINEERS, LLC  
 3455 BRIARFIELD BLVD., SUITE E  
 MAUMEE, OH 43537  
 PHONE: 419-535-1015  
 www.dgl-td.com

**CATAWBA BOAT YARD  
 STORAGE CONDOMINIUMS,  
 A COMMERCIAL CONDOMINIUM**  
 PART OF THE FRELANDS SURVEY,  
 GREAT LOT 10, SECTION 3,  
 CATAWBA ISLAND TOWNSHIP, OTTAWA COUNTY, OHIO  
**CONDOMINIUM AMENDMENT 4**

FILE: 20116 Amend 4.dwg  
 JOB NO.: 20116-10  
 DRAWN BY: GSW  
 ISSUED: 06/28/2024

HARTUNG TITLE  
 Inst #20240005074  
**2/2**