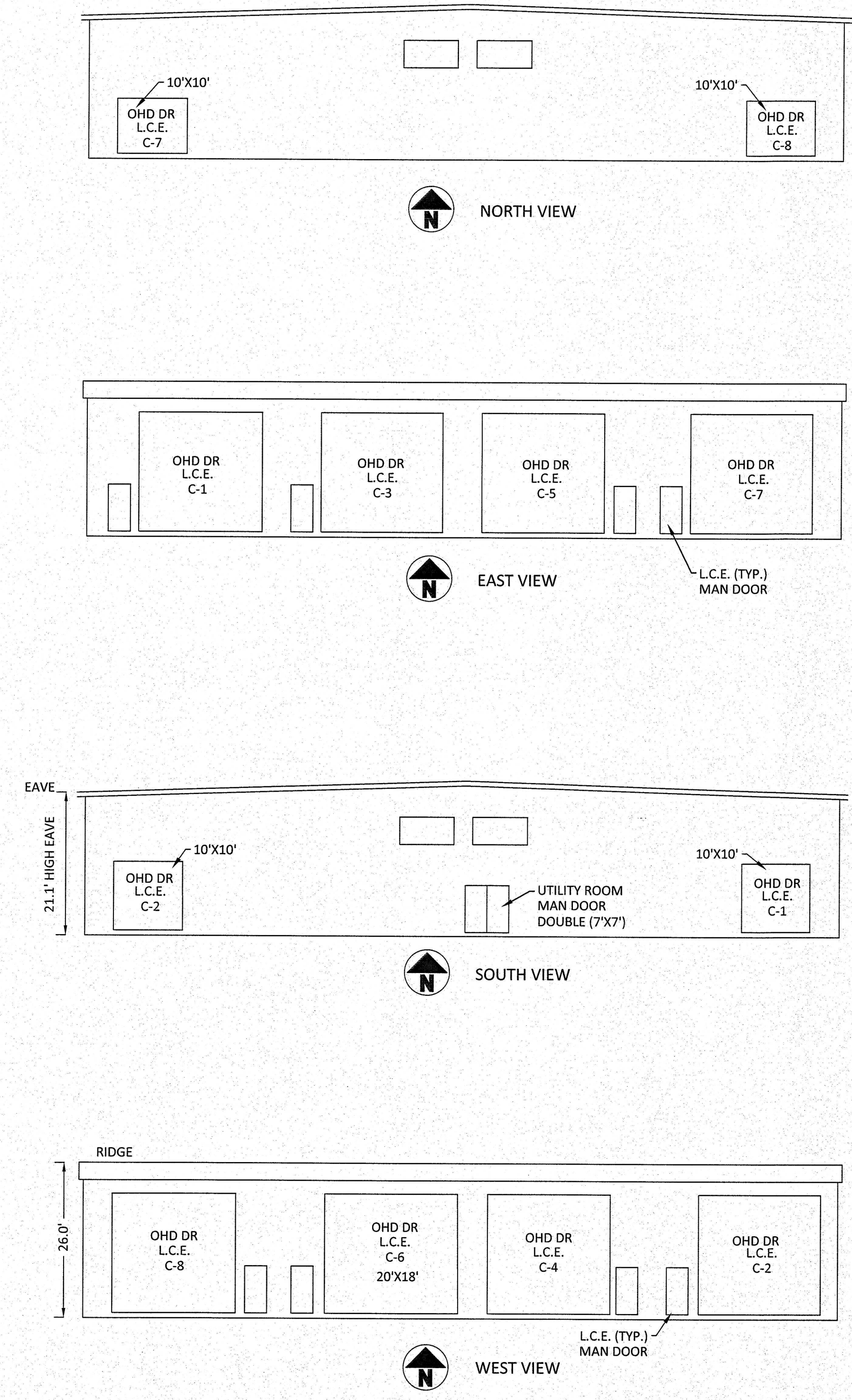


*NOTE: HALF INTERIOR WALL GOES WITH EACH UNIT. (TYP.)

DETAIL: N.T.S.



*NOTE: ALL OVERHEAD DOORS (OHD DR) ARE 18'X18' UNLESS OTHERWISE NOTED.
 *NOTE: ALL MAN DOORS ARE 3' X 7' UNLESS OTHERWISE NOTED.
 OHD DR = OVERHEAD DOOR

HARTUNG TITLE

Inst #202200323184

NO	REVISION	DATE
1		
2		
3		
4		
5		
6		
7		
8		
9		

DGL CONSULTING ENGINEERS, LLC
 3455 BRIARFIELD BLVD, SUITE E
 MAUMEE, OH 43537
 PHONE: 419.535.1015
 www.dgl-ctd.com

CATAWBA BOAT YARD
 STORAGE CONDOMINIUMS,
 A COMMERCIAL CONDOMINIUM
 PART OF THE FIRELANDS SURVEY,
 GREAT LOT 10, SECTION 3,
 CATAWBA ISLAND TOWNSHIP, OTTAWA COUNTY, OHIO
CONDOMINIUM AMENDMENT 2

FILE:	20116 Amend 2.dwg
JOB NO.:	20116-
DRAWN BY:	GSW
ISSUED:	11/02/2022