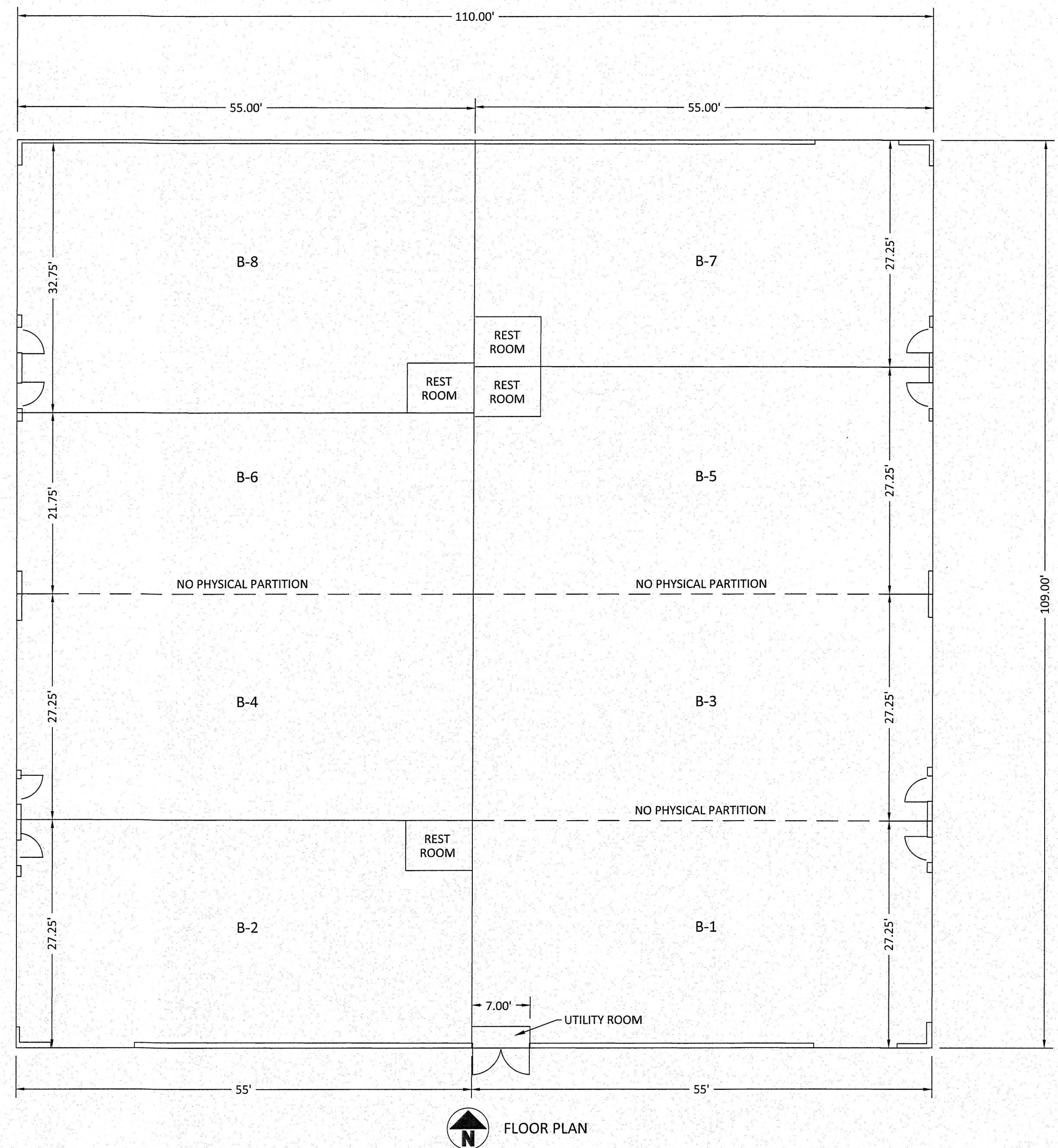
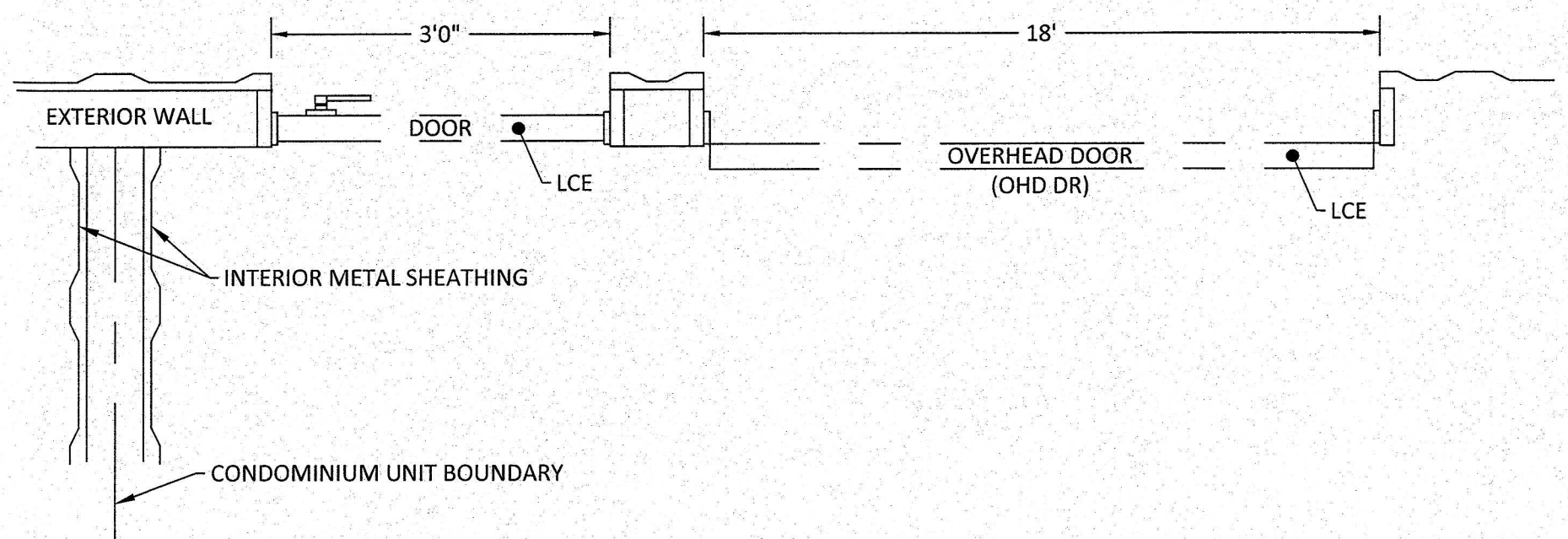


PLOTTED: Aug 30, 2022 - 10:51am  
 DRAWING: M:\20116 (Catawba Island Club - 2020 General Services Agreement)\Catawba Boatyard Ventures next condo west\SURVEY.Dwg\20116.dwg: Page 2

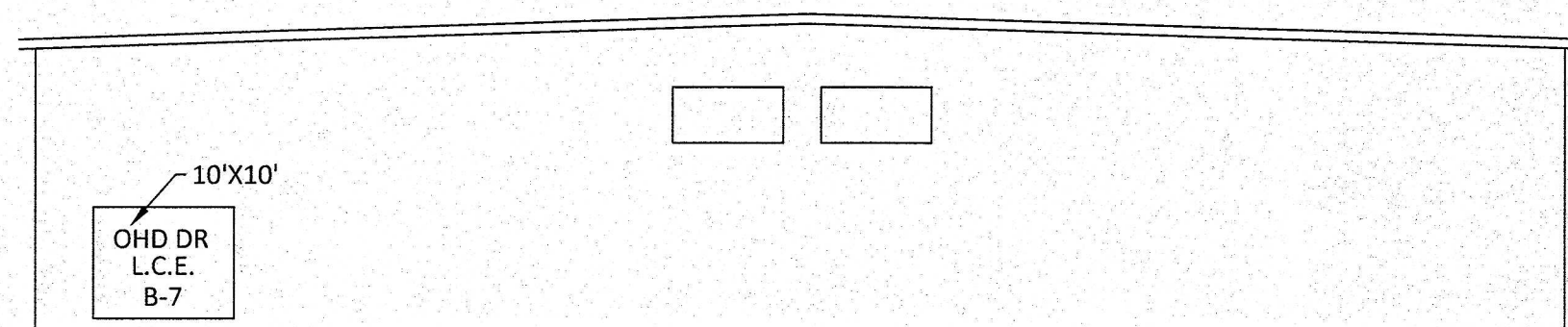


FLOOR PLAN

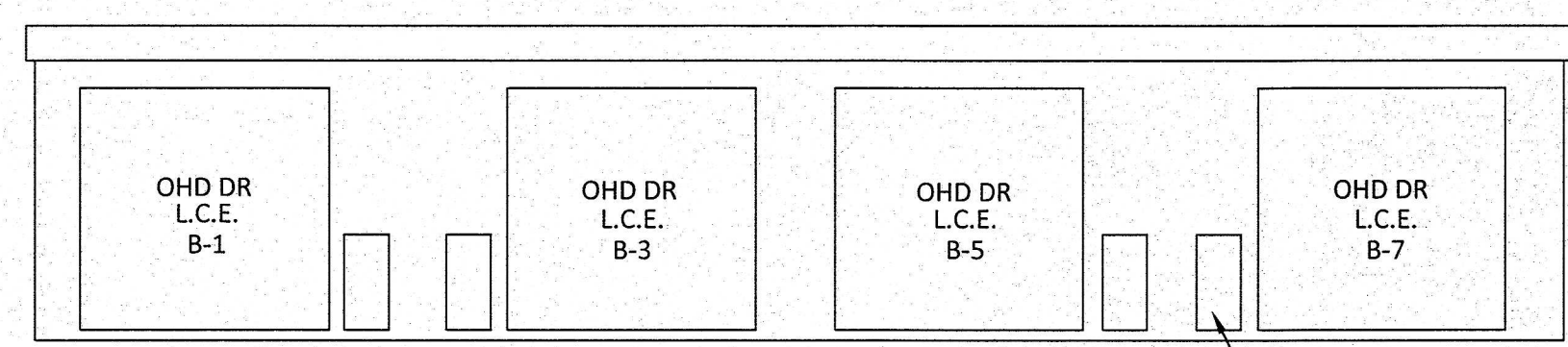


\*NOTE: HALF INTERIOR WALL GOES WITH EACH UNIT. (TYP.)

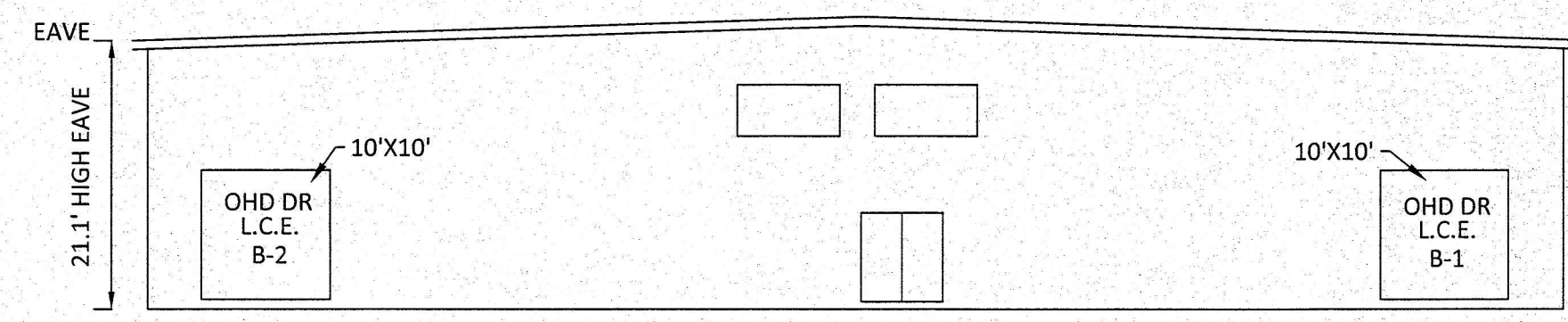
DETAIL: N.T.S.



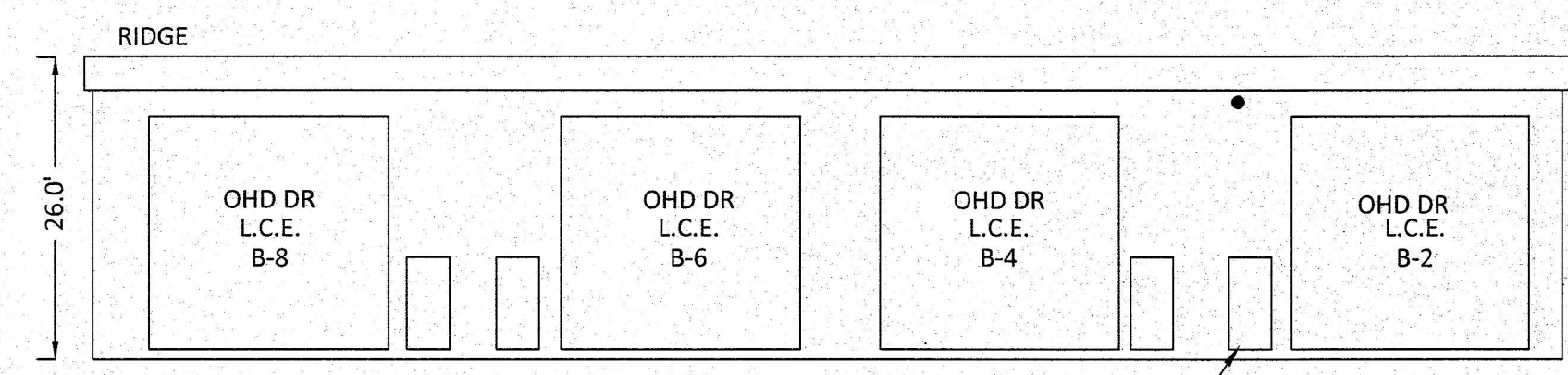
NORTH VIEW



EAST VIEW



SOUTH VIEW



WEST VIEW

\*NOTE: ALL OVERHEAD DOORS (OHD DR) ARE 18'X18' UNLESS OTHERWISE NOTED.  
 \*NOTE: ALL MAN DOORS ARE 3' X 7'.  
 OHD DR = OVERHEAD DOOR

NO	REVISION	DATE
9		
8		
7		
6		
5		
4		
3		
2		
1		

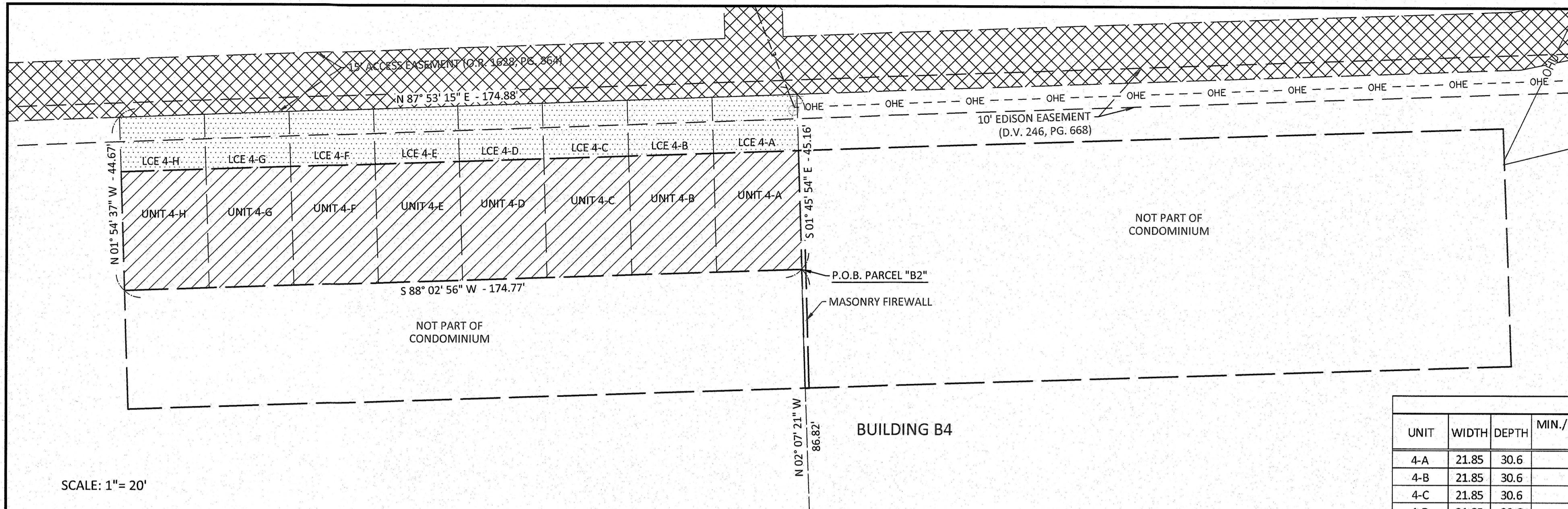
  
**DGL**  
 ENGINEERS  
 DGL CONSULTING ENGINEERS, LLC  
 3455 BRIARFIELD BLVD SUITE E  
 MAUMEE, OH 43537  
 PHONE: 419.535.1015  
 www.dgl-tcd.com

**CATAWBA BOAT YARD  
 STORAGE CONDOMINIUMS,  
 A COMMERCIAL CONDOMINIUM**  
 PART OF THE FIRELANDS SURVEY,  
 GREAT LOT 10, SECTION 3,  
 CATAWBA ISLAND TOWNSHIP, OTTAWA COUNTY, OHIO  
**CONDOMINIUM AMENDMENT 1**

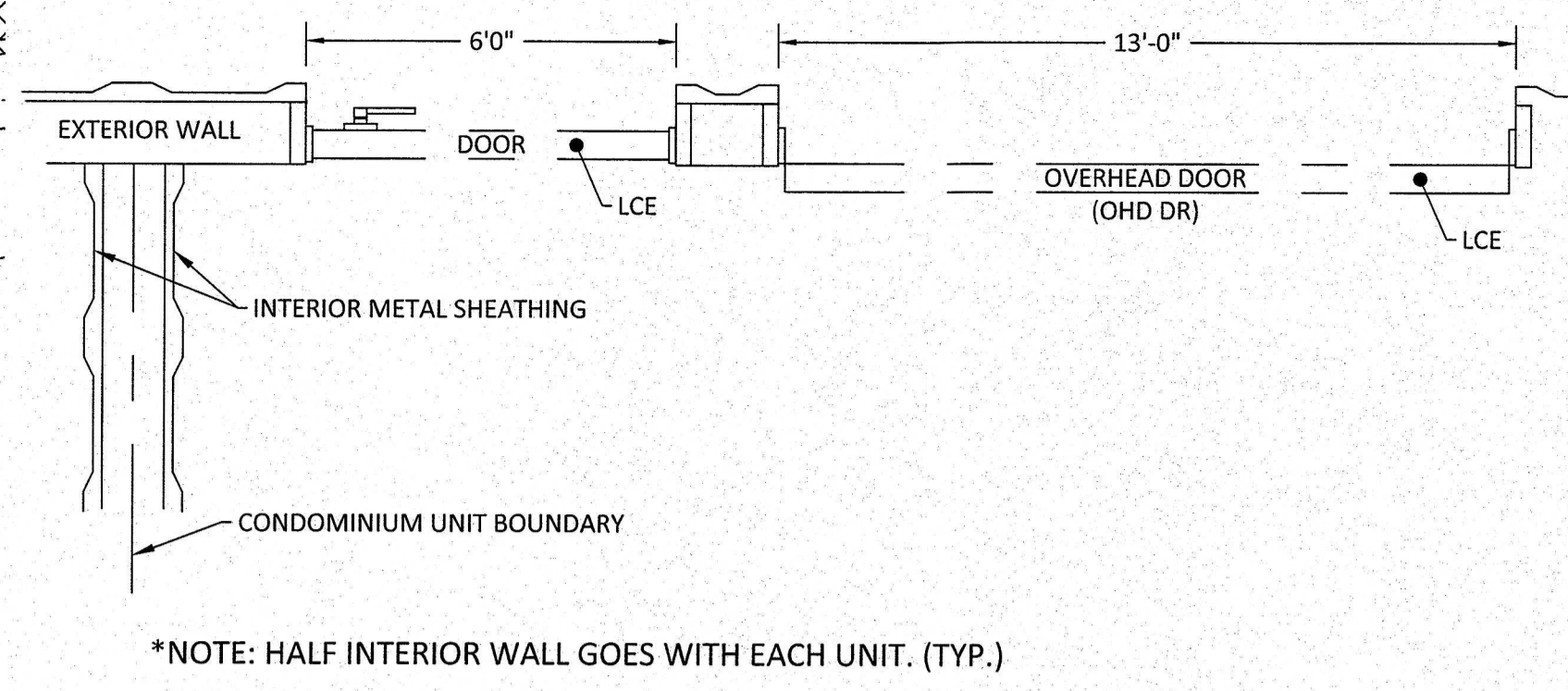
FILE:	20116.dwg
JOB NO.:	20116-6
DRAWN BY:	KEY
ISSUED:	06/22/2022



PLOTTED: Aug 30, 2022 - 10:57am  
 DRAWING: W:\20116 (Catawba Island Club - 2020 General Services Agreement)\Catawba Boatyard Ventures next condo west (SURVEY) Dwg\20116.dwg: Page 3

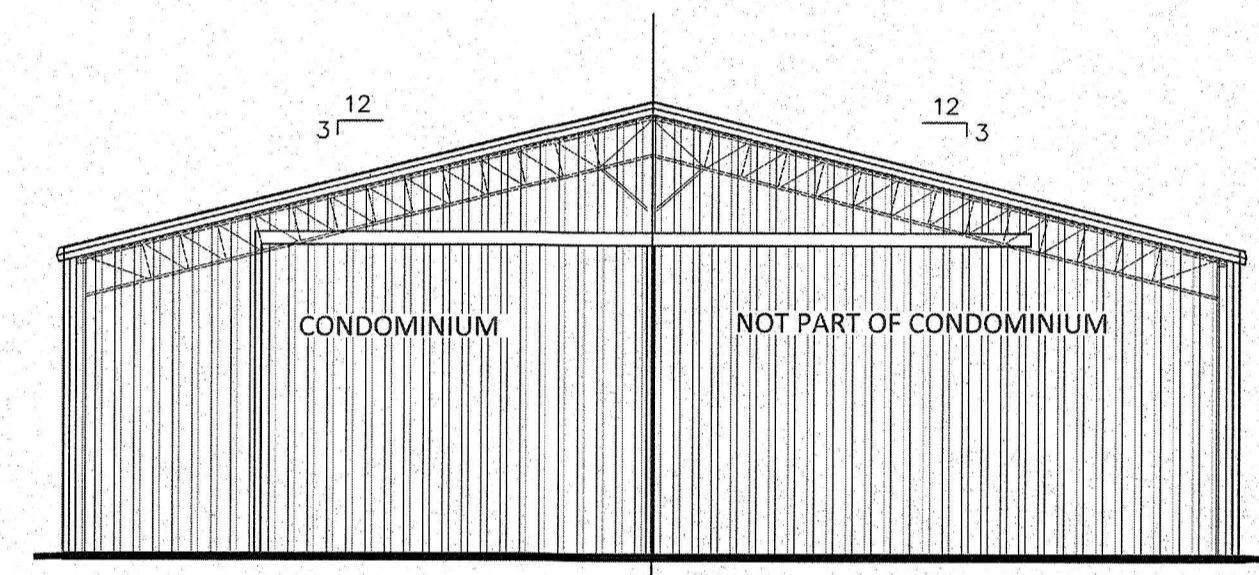


SCALE: 1" = 20'

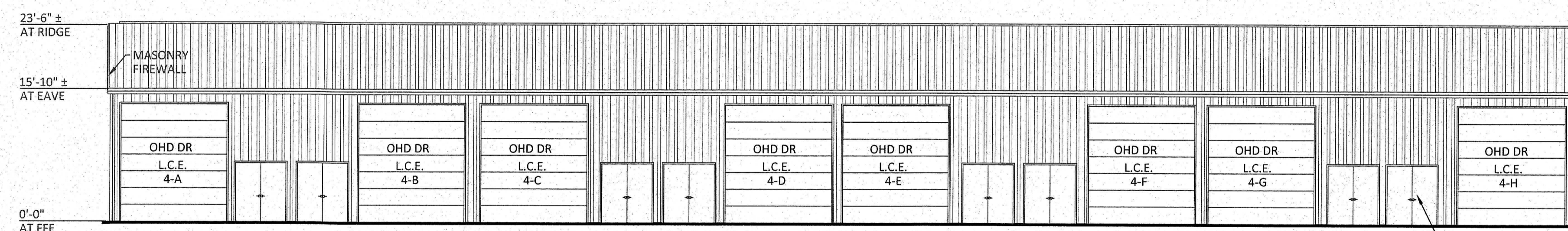


DETAIL: N.T.S.

STORAGE CONDOMINIUM UNIT DIMENSIONS - CONDOMINIUM PROPERTY BUILDING 4								
UNIT	WIDTH	DEPTH	MIN./MAX INTERIOR HEIGHTS	MAN DOOR-LCE	OVERHEAD DOOR - LCE	ADDITIONAL OVERHEAD DOOR - LCE	AREA (S.F.)	PERCENTAGE INTEREST PER UNIT IN THE COMMON ELEMENTS
4-A	21.85	30.6	16'/23.5'	6'x 7'	13'x 13'	0	668.60	2.23%
4-B	21.85	30.6	16'/23.5'	6'x 7'	13'x 13'	0	668.60	2.23%
4-C	21.85	30.6	16'/23.5'	6'x 7'	13'x 13'	0	668.60	2.23%
4-D	21.85	30.6	16'/23.5'	6'x 7'	13'x 13'	0	668.60	2.23%
4-E	21.85	30.6	16'/23.5'	6'x 7'	13'x 13'	0	668.60	2.23%
4-F	21.85	30.6	16'/23.5'	6'x 7'	13'x 13'	0	668.60	2.23%
4-G	21.85	30.6	16'/23.5'	6'x 7'	13'x 13'	0	668.60	2.23%
4-H	21.85	30.6	16'/23.5'	6'x 7'	13'x 13'	0	668.60	2.23%

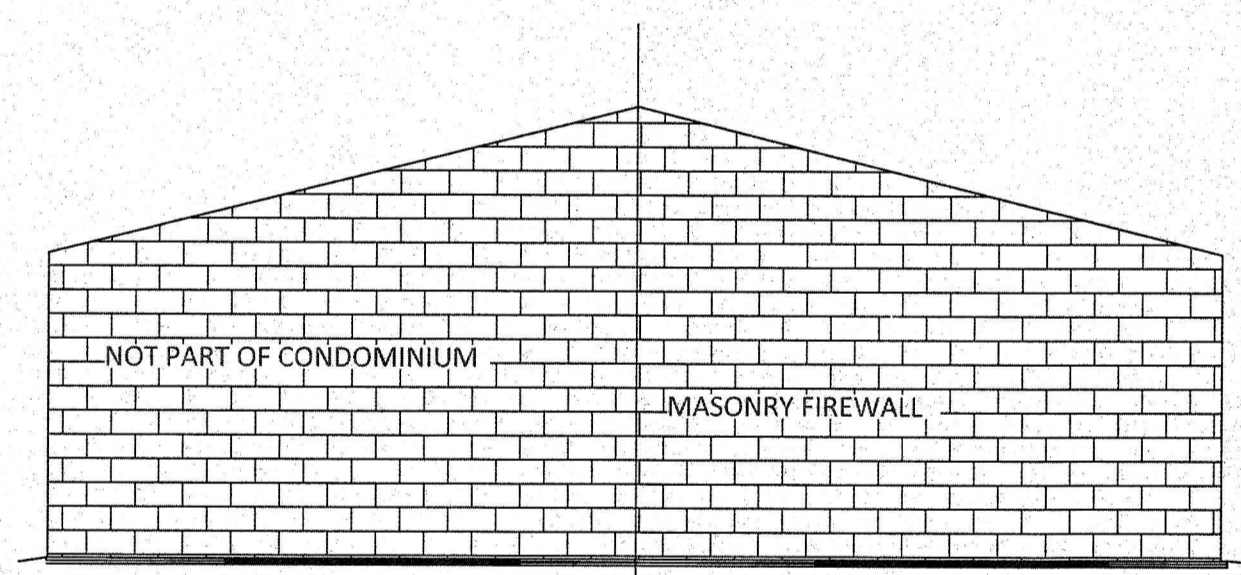


WEST ELEVATION

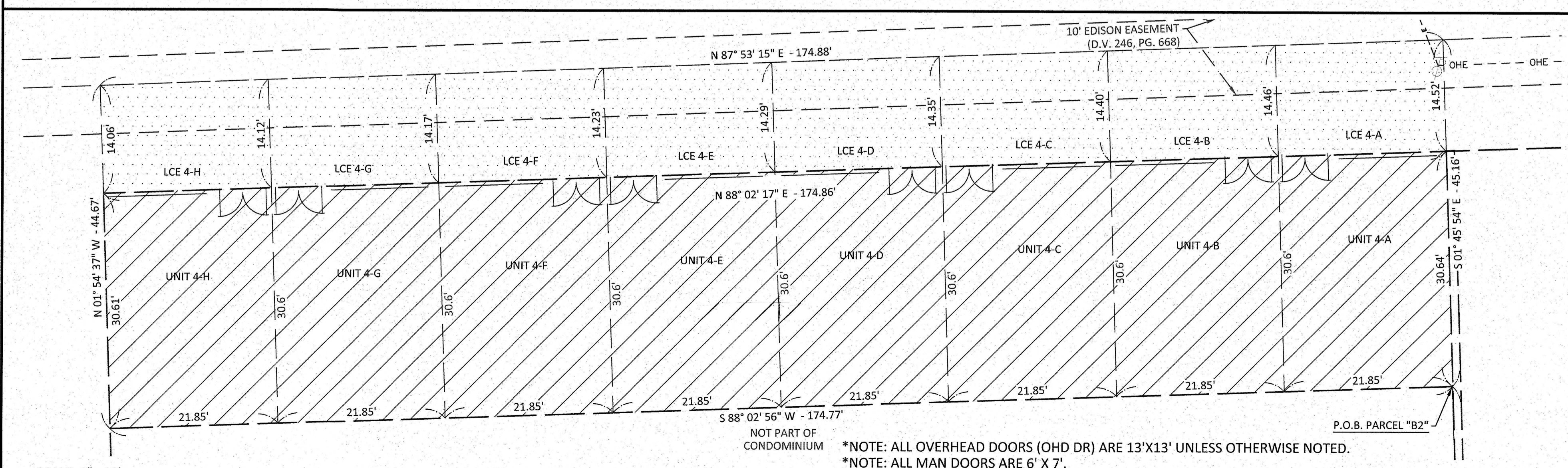


ELEVATIONS: NOT TO SCALE

NORTH ELEVATION



EAST ELEVATION



SCALE: 1" = 10'

\*NOTE: ALL OVERHEAD DOORS (OHD DR) ARE 13'X13' UNLESS OTHERWISE NOTED.  
 \*NOTE: ALL MAN DOORS ARE 6' X 7'.  
 OHD DR = OVERHEAD DOOR

**PARCEL B2:**  
 A parcel of land located in part of the Firelands Survey, Lot 10, Section 03, Catawba Island Township, Ottawa County, Ohio:

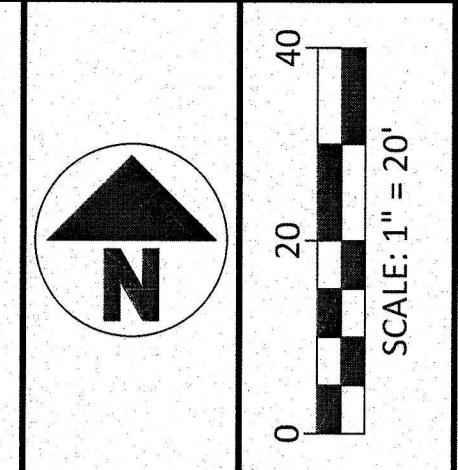
**Commencing** from a mag nail found marking the Southeast corner of said Lot 10, also being on the centerline of East Catawba Road (State Route 53) (80 feet right of way);

Thence Northerly along the centerline of said East Catawba Road, North 01 degrees 11 minutes 24 seconds West, a distance of 405.34 feet to a point marking the Southeast corner of lands now or formerly owned by Norma Jean Winke, Trustee through Deed Book 439, Page 814 and Official Record Book 755, Page 131 of the Ottawa County Records;

Thence Westerly along the Southerly line of said Winke lands and the Southerly line of lands now or formerly owned by Midland Title Agency Inc., Trustee through Official Record Book 1292, Page 669 of the Ottawa County Records, South 87 degrees 52 minutes 39 seconds West, a distance of 485.72 feet to a point;

Thence Northerly along a line perpendicular to the Southerly line of said Winke lands, North 02 degrees 07 minutes 21 seconds West, a distance of 86.82 feet to the **True Point of Beginning** of the Parcel herein described;

1. Thence Westerly along a line, South 88 degrees 02 minutes 56 seconds West, a distance of 174.77 feet to a point;
2. Thence Northerly along a line, North 01 degrees 54 minutes 37 seconds West, a distance of 44.67 feet to a point;
3. Thence Easterly along a line, North 87 degrees 53 minutes 15 seconds East, a distance of 174.88 feet to a point;
4. Thence Southerly along a line, South 01 degrees 45 minutes 54 seconds East, a distance of 45.16 feet to the **True Point of Beginning**, containing in all 0.180 acres of land more or less, subject however to all legal highways and prior easements of record.



NO	REVISION	DATE
9		
8		
7		
6		
5		
4		
3		
2		
1		

DGI CONSULTING ENGINEERS, LLC  
 3455 BRIARFIELD BLVD, SUITE E  
 MAUMEE, OH 43537  
 PHONE: 419.535.1015  
 www.dgi-llc.com

**CATAWBA BOAT YARD  
 STORAGE CONDOMINIUMS,  
 A COMMERCIAL CONDOMINIUM  
 PART OF THE FIRELANDS SURVEY,  
 GREAT LOT 10, SECTION 3,  
 CATAWBA ISLAND TOWNSHIP, OTTAWA COUNTY, OHIO  
 CONDOMINIUM AMENDMENT 1**

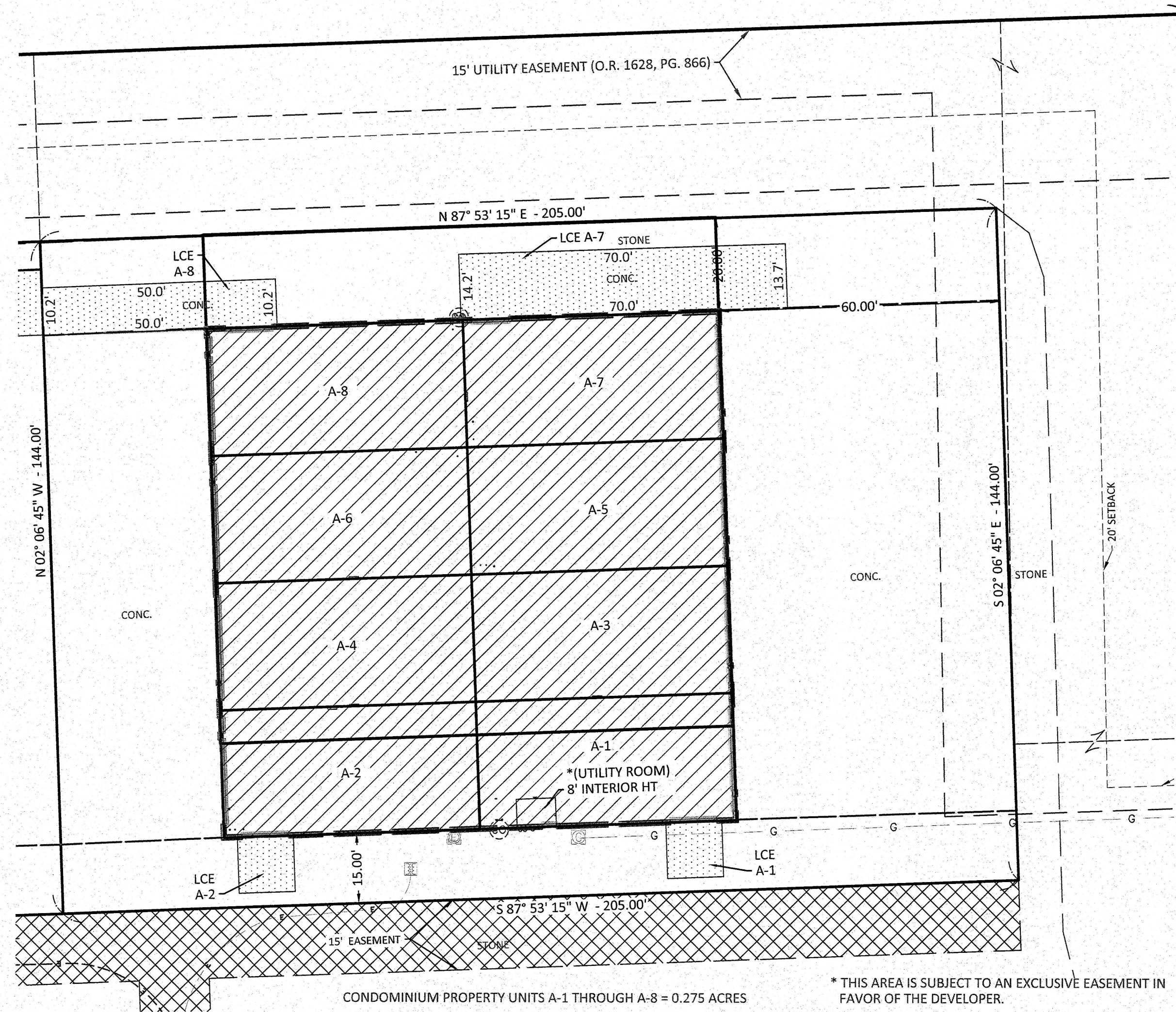
FILE: 20116.dwg  
 JOB NO.: 20116-6  
 DRAWN BY: PJS  
 ISSUED:

3/4

VOL 74 Pg 46



PLOTTED: Aug 30, 2022 - 10:51am  
 DRAWING: MA\_20116 (Catawba Island Club - 2020 General Services Agreement)\Catawba Boatyard Ventures next condo west\SURVEY\Draw\20116.dwg: Page 4



CONDOMINIUM PROPERTY UNITS A-1 THROUGH A-8 = 0.275 ACRES

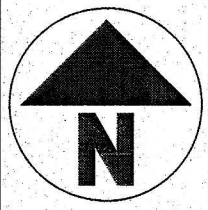
\* THIS AREA IS SUBJECT TO AN EXCLUSIVE EASEMENT IN FAVOR OF THE DEVELOPER.

STORAGE CONDOMINIUM UNIT DIMENSIONS - CONDOMINIUM PROPERTY BUILDING A								
UNIT	WIDTH	DEPTH	MIN./MAX INTERIOR HEIGHTS	MAN DOOR-LCE	OVERHEAD DOOR - LCE	ADDITIONAL OVERHEAD DOOR - LCE	AREA (S.F.)	PERCENTAGE INTEREST PER UNIT IN THE COMMON ELEMENTS
A-1	27.25'	55.00'	21' / 25.5'	3' X 7'	18' X 18'	10' X 10'	1,498.75	5.11%
A-2	27.25'	55.00'	21' / 25.5'	3' X 7'	18' X 18'	10' X 10'	1,498.75	5.11%
A-3	27.25'	55.00'	21' / 25.5'	3' X 7'	18' X 18'		1,498.75	5.11%
A-4	27.25'	55.00'	21' / 25.5'	3' X 7'	18' X 18'		1,498.75	5.11%
A-5	27.25'	55.00'	21' / 25.5'	3' X 7'	18' X 18'		1,498.75	5.11%
A-6	27.25'	55.00'	21' / 25.5'	3' X 7'	18' X 18'		1,498.75	5.11%
A-7	27.25'	55.00'	21' / 25.5'	3' X 7'	18' X 18'	8' X 8'	1,498.75	5.11%
A-8	27.25'	55.00'	21' / 25.5'	3' X 7'	18' X 18'	10' X 10'	1,498.75	5.11%

HARTUNG TITLE

Inst #202200320424

VOI 74 P. 47



NO	REVISION	DATE
9		
8		
7		
6		
5		
4		
3		
2		
1		



**CATAWBA BOAT YARD  
 STORAGE CONDOMINIUMS,  
 A COMMERCIAL CONDOMINIUM**  
 PART OF THE FIRELANDS SURVEY,  
 GREAT LOT 10, SECTION 3,  
 CATAWBA ISLAND TOWNSHIP, OTTAWA COUNTY, OHIO  
**CONDOMINIUM AMENDMENT 1**

FILE: 20116.dwg  
 JOB NO.: 20116-6  
 DRAWN BY: KEY  
 ISSUED: 06/22/2022