



Front Elevation



Rear Elevation

Catawba Bay
Building I
Condominium
Documents

5313 E. Swan Lake Blvd.
Port Clinton, Ohio 43452

Exterior Elevations



Left Side Elevation

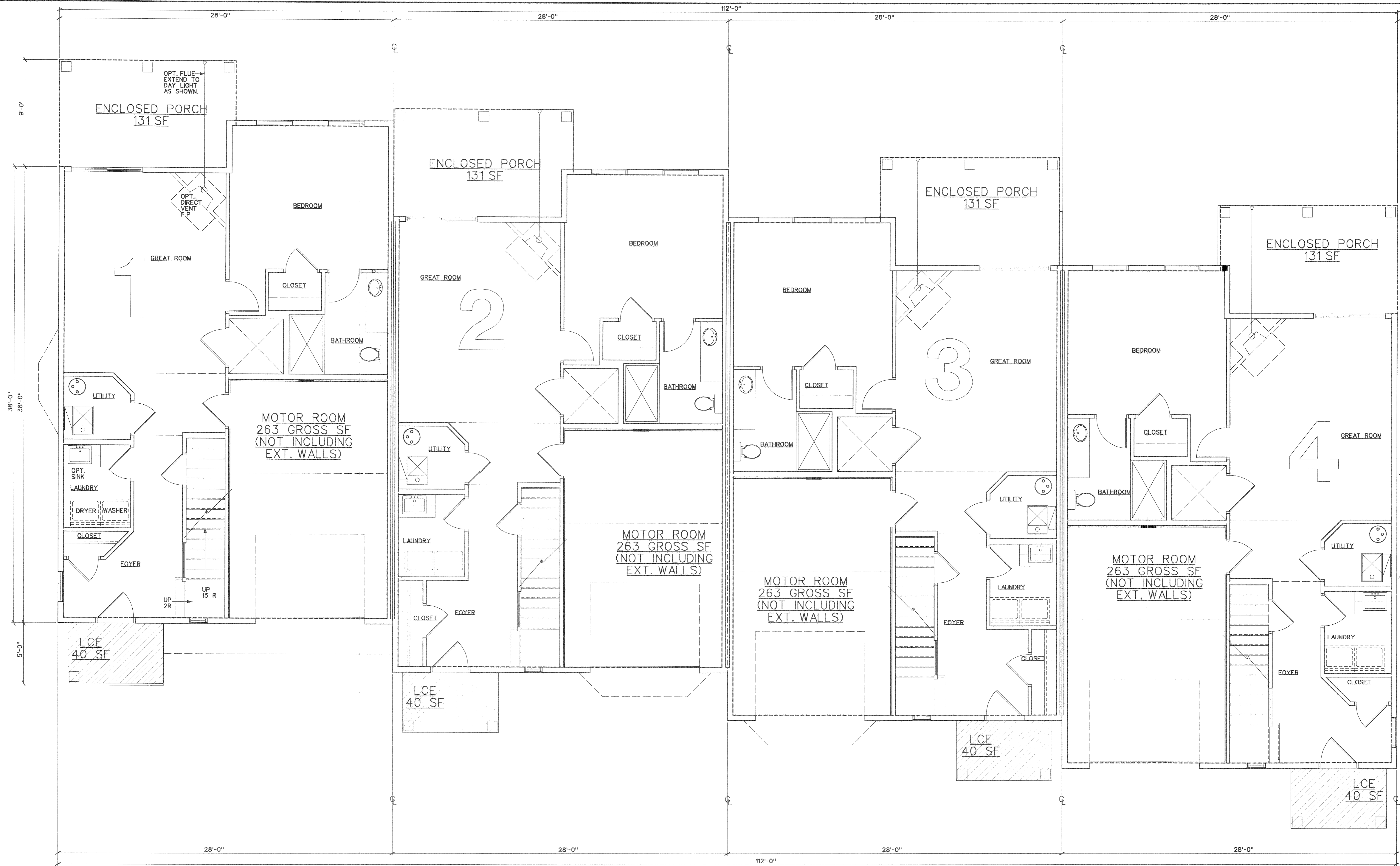


Right Side Elevation

Catawba Bay
Building I
Condominium
Documents

5313 E. Swan Lake Blvd.
Port Clinton, Ohio 43452

Exterior Elevations



Unit I-1 Square Footage (not including ext. walls)

ROOMS	S.F.
ENCLOSED PORCH	131
MOTOR ROOM	263
FIRST FLOOR ROOMS	781
SECOND FLOOR ROOMS	1066
UNIT TOTAL	2241
UNIT LCE TOTAL	171

Unit I-2 Square Footage (not including ext. walls)

ROOMS	S.F.
ENCLOSED PORCH	131
MOTOR ROOM	263
FIRST FLOOR ROOMS	781
SECOND FLOOR ROOMS	1073
UNIT TOTAL	2248
UNIT LCE TOTAL	171

Unit I-3 Square Footage (not including ext. walls)

ROOMS	S.F.
ENCLOSED PORCH	131
MOTOR ROOM	263
FIRST FLOOR ROOMS	781
SECOND FLOOR ROOMS	1073
UNIT TOTAL	2248
UNIT LCE TOTAL	171

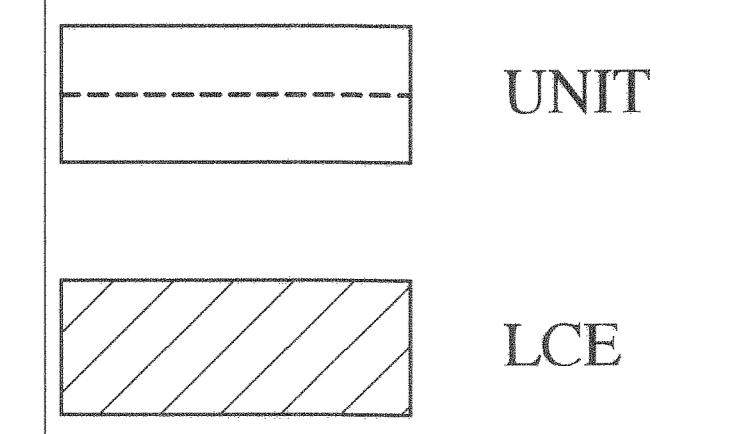
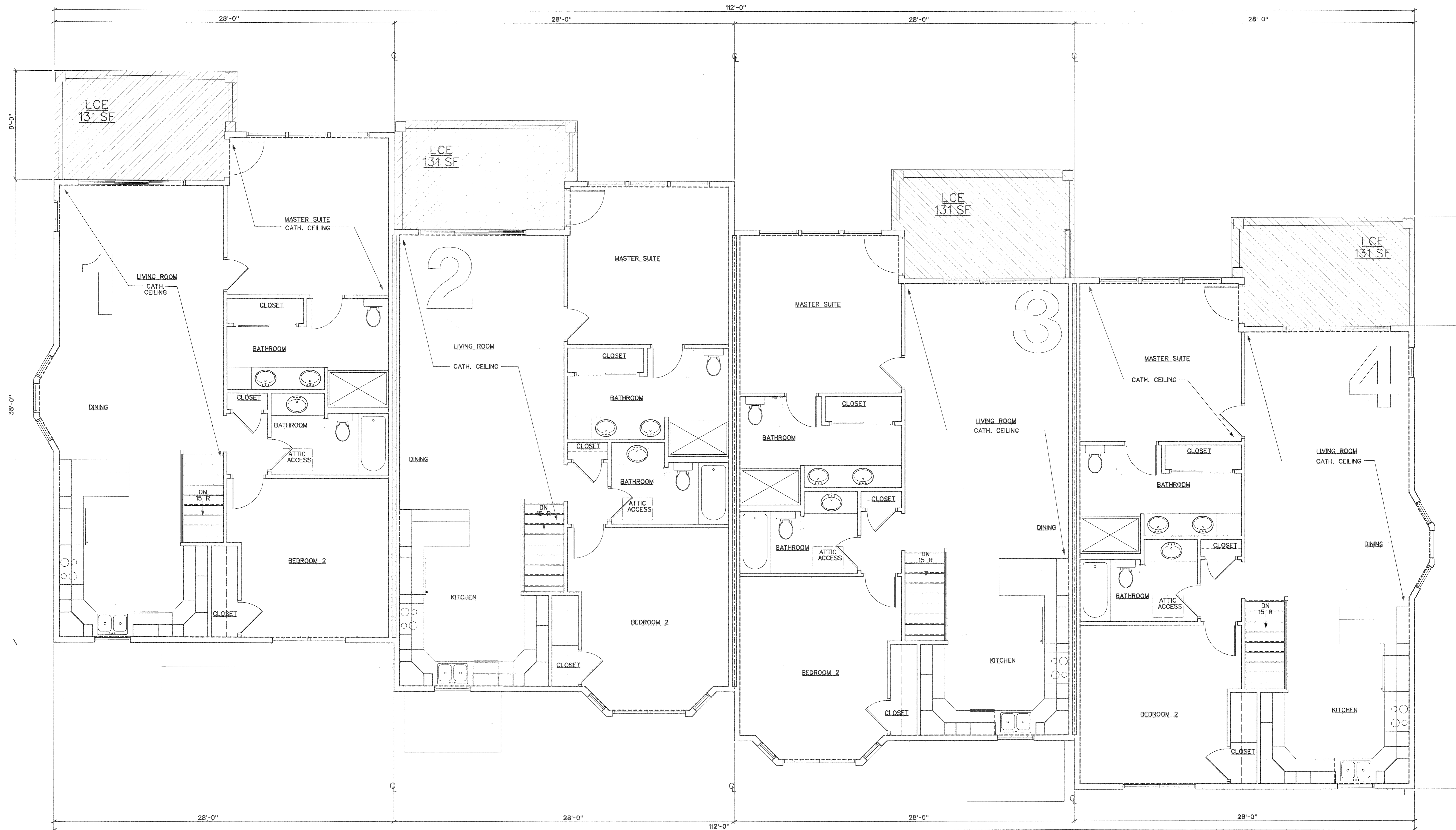
Unit I-4 Square Footage (not including ext. walls)

ROOMS	S.F.
ENCLOSED PORCH	131
MOTOR ROOM	263
FIRST FLOOR ROOMS	781
SECOND FLOOR ROOMS	1066
UNIT TOTAL	2241
UNIT LCE TOTAL	171

Catawba Bay Building I Condominium Documents

5313 E. Swan Lake Blvd.
Port Clinton, Ohio 43452

First Floor Plan



Catawba Bay Building I Condominium Documents

5313 E. Swan Lake Blvd.
Port Clinton, Ohio 43452

Unit I-1 Square Footage (not including ext. walls)

ROOMS	S.F.
ENCLOSED PORCH	131
MOTOR ROOM	263
FIRST FLOOR ROOMS	781
SECOND FLOOR ROOMS	1066
UNIT TOTAL	2241
UNIT LCE TOTAL	171

Unit I-2 Square Footage (not including ext. walls)

ROOMS	S.F.
ENCLOSED PORCH	131
MOTOR ROOM	263
FIRST FLOOR ROOMS	781
SECOND FLOOR ROOMS	1073
UNIT TOTAL	2248
UNIT LCE TOTAL	171

Unit I-3 Square Footage (not including ext. walls)

ROOMS	S.F.
ENCLOSED PORCH	131
MOTOR ROOM	263
FIRST FLOOR ROOMS	781
SECOND FLOOR ROOMS	1073
UNIT TOTAL	2248
UNIT LCE TOTAL	171

Unit I-4 Square Footage (not including ext. walls)

ROOMS	S.F.
ENCLOSED PORCH	131
MOTOR ROOM	263
FIRST FLOOR ROOMS	781
SECOND FLOOR ROOMS	1066
UNIT TOTAL	2241
UNIT LCE TOTAL	171

Second Floor Plan