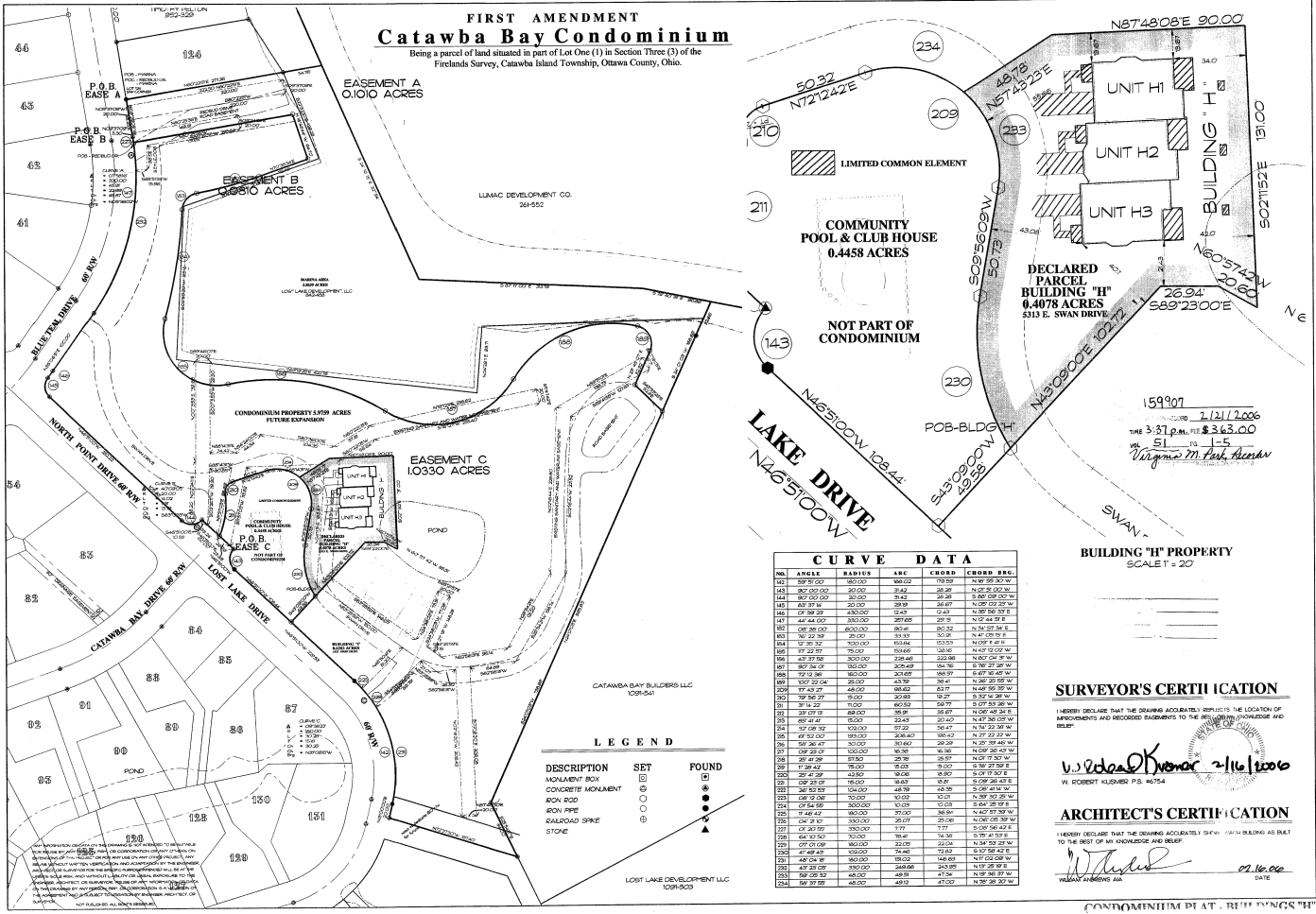


# FIRST AMENDMENT Catawba Bay Condominium

Being a parcel of land situated in part of Lot One (1) in Section Three (3) of the Friends Survey, Catawba Island Township, Ottawa County, Ohio.



### CURVE DATA

NO.	ANGLE	RADIUS	ARC	CORD	CORD BEG.
143	50.32	180.00	30.00	171.52	N129°50'00"W
144	80.00	90.00	15.00	28.28	N45°00'00"W
145	80.00	90.00	15.00	28.28	N105°00'00"W
146	69.37	50.00	14.44	23.58	N129°02'30"W
147	79.38	130.00	22.44	12.41	N129°50'00"W
148	44.44	150.00	25.72	22.72	N129°50'00"W
149	50.32	180.00	30.00	171.52	N129°50'00"W
150	79.37	130.00	22.44	12.41	N129°50'00"W
151	79.37	130.00	22.44	12.41	N129°50'00"W
152	79.37	130.00	22.44	12.41	N129°50'00"W
153	79.37	130.00	22.44	12.41	N129°50'00"W
154	79.37	130.00	22.44	12.41	N129°50'00"W
155	79.37	130.00	22.44	12.41	N129°50'00"W
156	79.37	130.00	22.44	12.41	N129°50'00"W
157	79.37	130.00	22.44	12.41	N129°50'00"W
158	79.37	130.00	22.44	12.41	N129°50'00"W
159	79.37	130.00	22.44	12.41	N129°50'00"W
160	79.37	130.00	22.44	12.41	N129°50'00"W
161	79.37	130.00	22.44	12.41	N129°50'00"W
162	79.37	130.00	22.44	12.41	N129°50'00"W
163	79.37	130.00	22.44	12.41	N129°50'00"W
164	79.37	130.00	22.44	12.41	N129°50'00"W
165	79.37	130.00	22.44	12.41	N129°50'00"W
166	79.37	130.00	22.44	12.41	N129°50'00"W
167	79.37	130.00	22.44	12.41	N129°50'00"W
168	79.37	130.00	22.44	12.41	N129°50'00"W
169	79.37	130.00	22.44	12.41	N129°50'00"W
170	79.37	130.00	22.44	12.41	N129°50'00"W
171	79.37	130.00	22.44	12.41	N129°50'00"W
172	79.37	130.00	22.44	12.41	N129°50'00"W
173	79.37	130.00	22.44	12.41	N129°50'00"W
174	79.37	130.00	22.44	12.41	N129°50'00"W
175	79.37	130.00	22.44	12.41	N129°50'00"W
176	79.37	130.00	22.44	12.41	N129°50'00"W
177	79.37	130.00	22.44	12.41	N129°50'00"W
178	79.37	130.00	22.44	12.41	N129°50'00"W
179	79.37	130.00	22.44	12.41	N129°50'00"W
180	79.37	130.00	22.44	12.41	N129°50'00"W
181	79.37	130.00	22.44	12.41	N129°50'00"W
182	79.37	130.00	22.44	12.41	N129°50'00"W
183	79.37	130.00	22.44	12.41	N129°50'00"W
184	79.37	130.00	22.44	12.41	N129°50'00"W
185	79.37	130.00	22.44	12.41	N129°50'00"W
186	79.37	130.00	22.44	12.41	N129°50'00"W
187	79.37	130.00	22.44	12.41	N129°50'00"W
188	79.37	130.00	22.44	12.41	N129°50'00"W
189	79.37	130.00	22.44	12.41	N129°50'00"W
190	79.37	130.00	22.44	12.41	N129°50'00"W
191	79.37	130.00	22.44	12.41	N129°50'00"W
192	79.37	130.00	22.44	12.41	N129°50'00"W
193	79.37	130.00	22.44	12.41	N129°50'00"W
194	79.37	130.00	22.44	12.41	N129°50'00"W
195	79.37	130.00	22.44	12.41	N129°50'00"W
196	79.37	130.00	22.44	12.41	N129°50'00"W
197	79.37	130.00	22.44	12.41	N129°50'00"W
198	79.37	130.00	22.44	12.41	N129°50'00"W
199	79.37	130.00	22.44	12.41	N129°50'00"W
200	79.37	130.00	22.44	12.41	N129°50'00"W

### LEGEND

DESCRIPTION	SET	FOUND
MONUMENT MARK	□	□
CONCRETE MONUMENT	○	○
IRON ROD	●	●
IRON PIPE	○	○
ROADWAY SPINE	○	○
STONE	▲	▲

### SURVEYOR'S CERTIFICATION

I HEREBY DECLARE THAT THE DRAWING ACCURATELY REPRESENTS THE LOCATION OF IMPROVEMENTS AND RECORDED SUBDIVISIONS TO THE BEST OF MY KNOWLEDGE AND BELIEF.

*Robert Kusmer* 2/16/2006  
 W. ROBERT KUSMER P.S. 46754

### ARCHITECT'S CERTIFICATION

I HEREBY DECLARE THAT THE DRAWING ACCURATELY SHOWS THE BUILDING AS PLAT TO THE BEST OF MY KNOWLEDGE AND BELIEF.

*William M. Park* 02/16/06  
 W.M. PARK ARCHITECTS INC.

**KUSMER & ASSOCIATES, INC.**  
 1500 N. STATE ST., SUITE 100, CATAWBA ISLAND, OHIO 44824  
 PH: 419-326-1111 FAX: 419-326-1112

**Lost Lake Development, LLC**  
 4739 Maple Run, Catawba Island, Ohio 44824  
 Phone: 419-326-1111

**Scale: 1" = 20'**

**1 of 5**  
**Rev - 0**



Front Elevation



Rear Elevation

 LCE

**Catawba Bay  
Building H  
Condominium  
Documents**

5313 E. Swan Lake Blvd.  
Port Clinton, Ohio 43452

Exterior Elevations



Left Side Elevation

 LCE

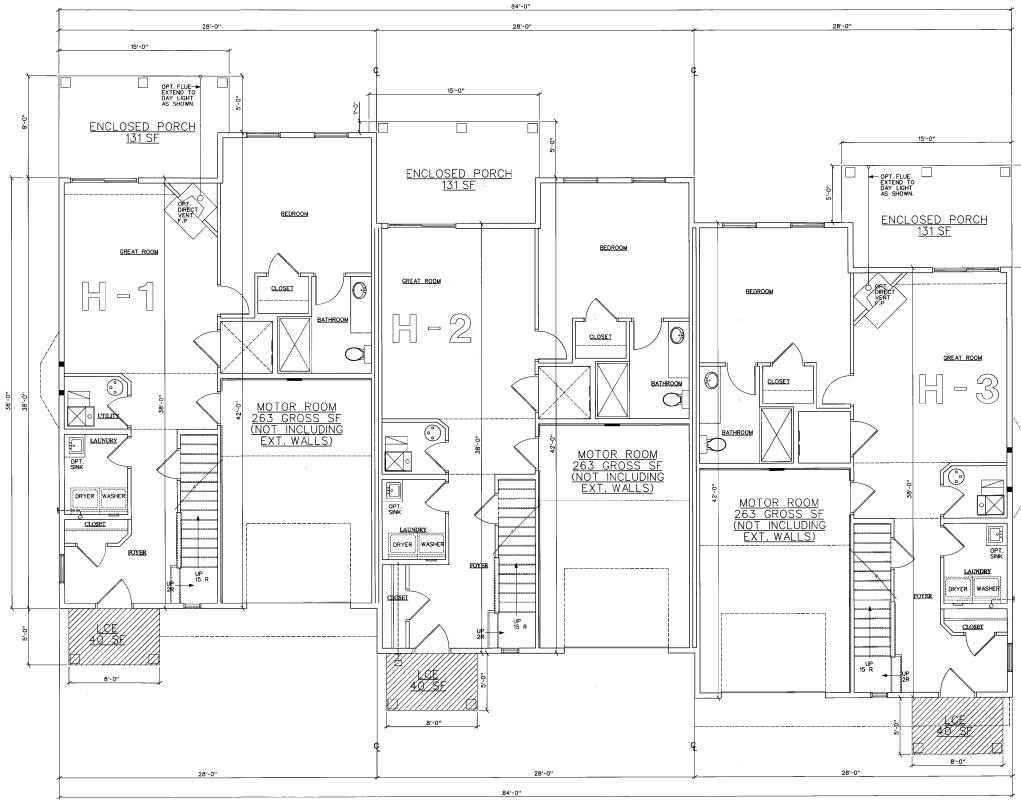


Right Side Elevation

**Catawba Bay  
Building H  
Condominium  
Documents**

5313 E. Swan Lake Blvd.  
Port Clinton, Ohio 43452

Exterior Elevations



LCE

**Catawba Bay Building H Condominium Documents**

5313 E. Swan Lake Blvd.  
Port Clinton, Ohio 43452

**First Floor Plan**

Unit H-1 Square Footage (not including ext. walls)

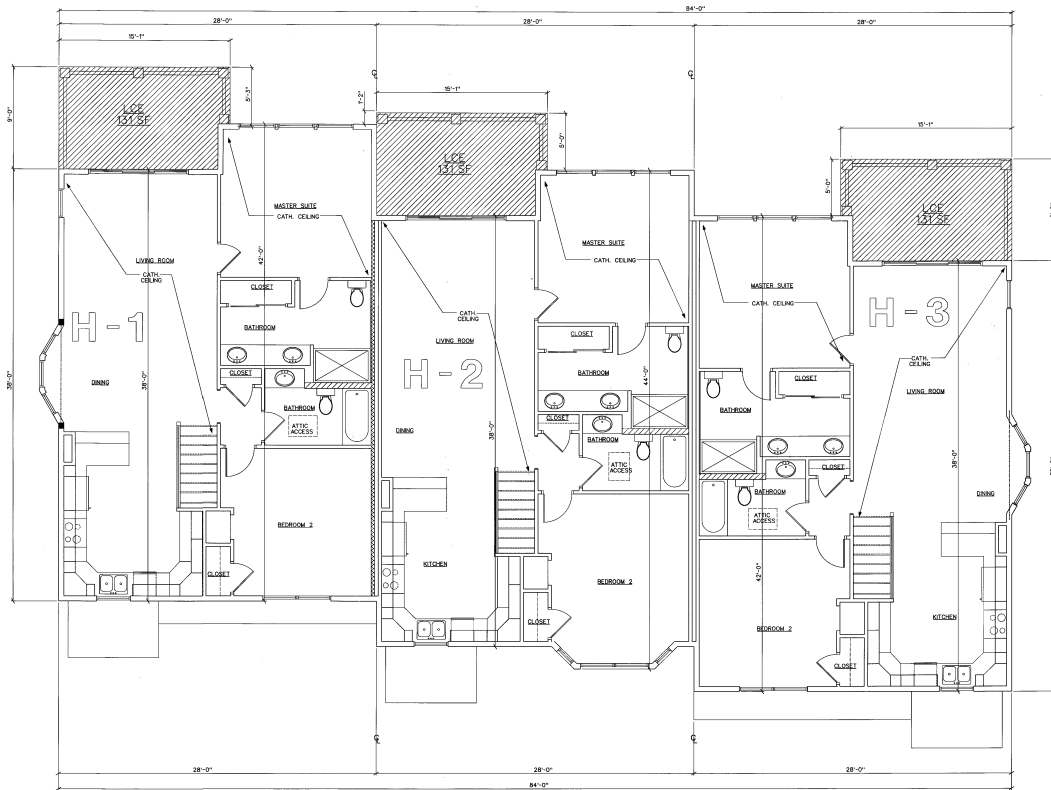
ROOMS	S.F.
ENCLOSED PORCH	131
MOTOR ROOM	263
FIRST FLOOR ROOMS	781
SECOND FLOOR ROOMS	2066
UNIT TOTAL	2241
UNIT LCE TOTAL	171

Unit H-2 Square Footage (not including ext. walls)

ROOMS	S.F.
ENCLOSED PORCH	131
MOTOR ROOM	263
FIRST FLOOR ROOMS	781
SECOND FLOOR ROOMS	2066
UNIT TOTAL	2241
UNIT LCE TOTAL	171

Unit H-3 Square Footage (not including ext. walls)

ROOMS	S.F.
ENCLOSED PORCH	131
MOTOR ROOM	263
FIRST FLOOR ROOMS	781
SECOND FLOOR ROOMS	2066
UNIT TOTAL	2241
UNIT LCE TOTAL	171



 LCE

**Catawba Bay Building H Condominium Documents**

5313 E. Swan Lake Blvd.  
Port Clinton, Ohio 43452

**Second Floor Plan**

**Unit H-1 Square Footage (not including ext. walls)**

ROOMS	S.F.
ENCLOSED PORCH	131
MASTER ROOM	243
FIRST FLOOR ROOMS	781
SECOND FLOOR ROOMS	1046
UNIT TOTAL	2245
UNIT LEE TOTAL	171

**Unit H-2 Square Footage (not including ext. walls)**

ROOMS	S.F.
ENCLOSED PORCH	131
MASTER ROOM	243
FIRST FLOOR ROOMS	781
SECOND FLOOR ROOMS	1072
UNIT TOTAL	2245
UNIT LEE TOTAL	171

**Unit H-3 Square Footage (not including ext. walls)**

ROOMS	S.F.
ENCLOSED PORCH	131
MASTER ROOM	243
FIRST FLOOR ROOMS	781
SECOND FLOOR ROOMS	1046
UNIT TOTAL	2245
UNIT LEE TOTAL	171