

# OTTAWA COUNTY BENCHMARK DATA SHEET



## CAT 30-4.2

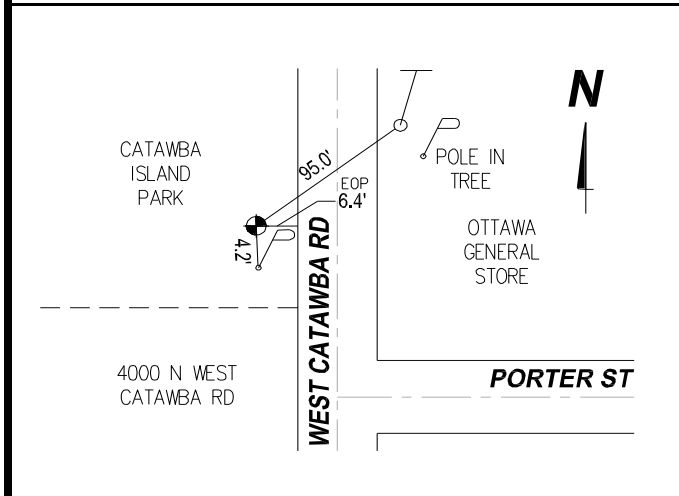
Township	Section	Town	Range	Type of Monument
CATAWBA ISLAND	SEC 3 LOT 7			3 1/4" Domed Bronze Disk in Concrete (OCE Spec. BM-1)
Set By	Shot By	Calculated	Calculated By	Published
OCE / OCHD	J. Allen	March 8, 2012	M. J. Wittman, P.S.	March 16, 2012

**Location**

West side of West Catawba Rd., C.R. #30, north of Porter St., T.R. #1059  
(Across from the Ottawa City General Store)

Vertical Control		
Vertical Datum	Method	Elevation (U.S. Survey Feet)
NAVD 88	GPS	591.63

Horizontal Control			
Horizontal Datum	Zone	Northing	Easting
NAD 83 CORS 96	OHIO NORTH 3401	698,352.111	1,875,458.422
Method	Latitude	Longitude	
GPS / CORPSCON	41° 34' 58.70991" N	82° 50' 24.31733" W	
Geoid	Scale Factor	Convergence	
GEOID 09	0.999979532	- 00° 13' 24.31565"	



- NOTES:**
1. Monument set: December 22, 2011
  2. Data Collected: 2-7-12, 2-14-12, 3-2-12