

OTTAWA COUNTY ENGINEERS OFFICE

REFERENCE NO. 4-7-15-F
EAST QUARTER POST SEC. 4
CARROLL TWP.
SHEET 1 OF 1.

ROUTE: C-24 DUFF-WASHA RD.

TOWNSHIP: CARROLL

SECTION: 4

T 7 NR 15 E.

PERSONNEL:
M. WITTMAN, P.S.
J. ALLEN

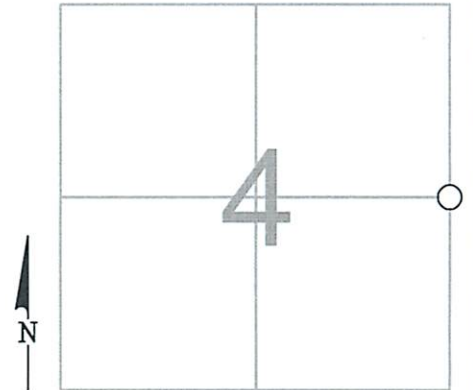
NORTHING:

EASTING:

DATUM:

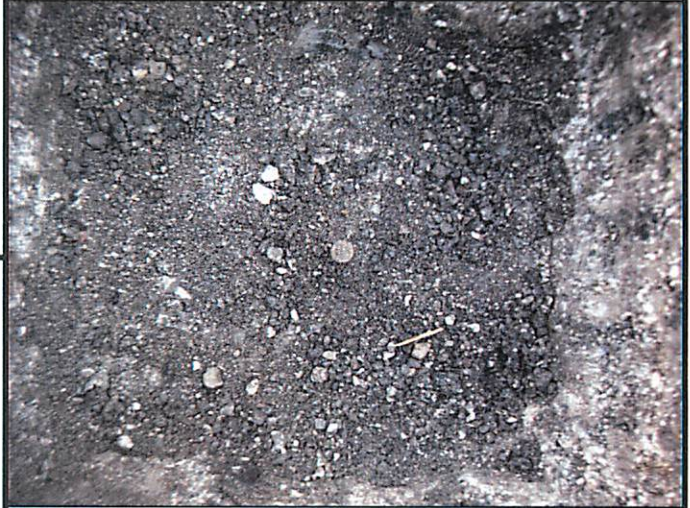
DATE / WEATHER / TEMP:

MAY 2, 2016
OVERCAST - N-NE
52° F



MONUMENT INFORMATION

MONUMENT TYPE: FD. 7/8" Ø IRON PIN
ON SURFACE - BELOW: 0.71'
LEFT - CL PAV'T - RIGHT: 1.50'



MISC. INFORMATION

IRON PIN SET OVER FOUND STONE ON AUGUST 15,
1965 PER STONE RECORDS.

MAY 2, 2016

SET MONUMENT BOX
OVER FOUND IRON PIN

