

# OTTAWA COUNTY ENGINEERS OFFICE

REFERENCE NO. 30-7-15-G  
SW CORNER POST SECTION 30  
CARROLL TWP.  
SHEET 1 OF 1.

ROUTE: C-23 BENTON-CARROLL RD.  
@ C-98 SALEM-CARROLL RD.

TOWNSHIP: CARROLL

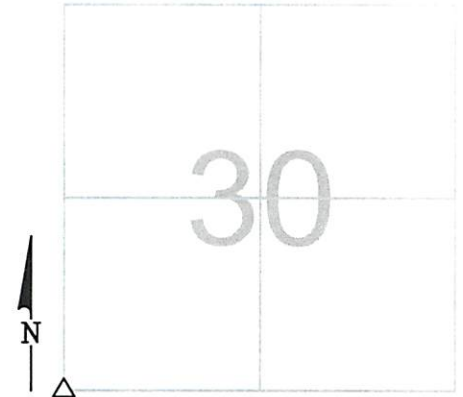
SECTION: 30

T 7 NR 15 E.

NORTHING:

EASTING:

DATUM:



PERSONNEL:  
M. WITTMAN, P.S.  
J. ALLEN  
K. SMITH

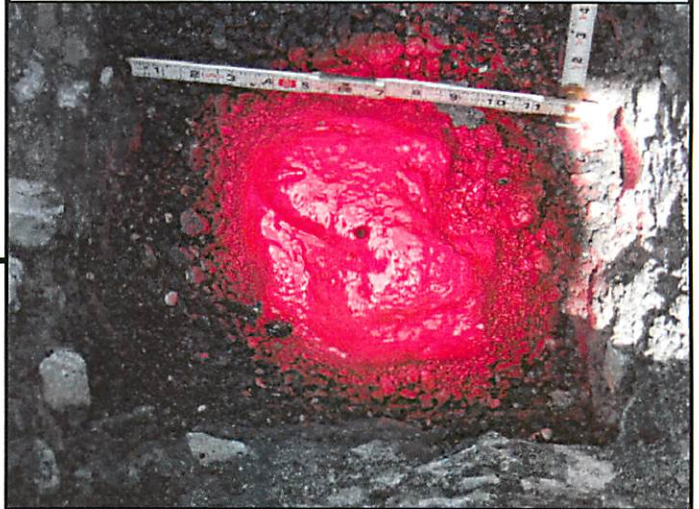
DATE / WEATHER / TEMP:  
JULY 11, 2007  
SUNNY W  
80° F

## MONUMENT INFORMATION

MONUMENT TYPE: FD STONE  
ON SURFACE - BELOW: 2.10'  
LEFT - CL PAV'T - RIGHT: 4'

HARD HEAD STONE 6" x 6"

SET DRILL HOLE IN CENTER OF STONE



## MISC. INFORMATION

THIS IS A CLOSING CORNER

