

OTTAWA COUNTY ENGINEERS OFFICE

REFERENCE NO. 3-7-15-D
WEST QUARTER POST SEC. 3
CARROLL TWP.
SHEET 1 OF 1.

ROUTE: C-24 DUFF-WASHA RD.

TOWNSHIP: CARROLL

SECTION: 3

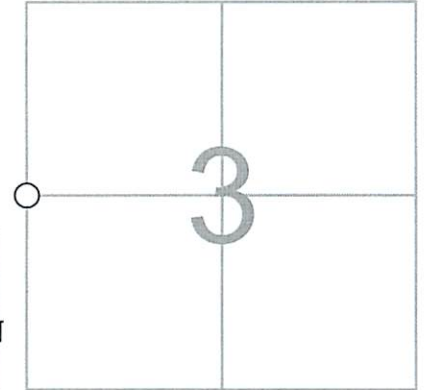
T 7 NR 15 E.

PERSONNEL:
M. WITTMAN, P.S.
J. ALLEN

NORTHING:

EASTING:

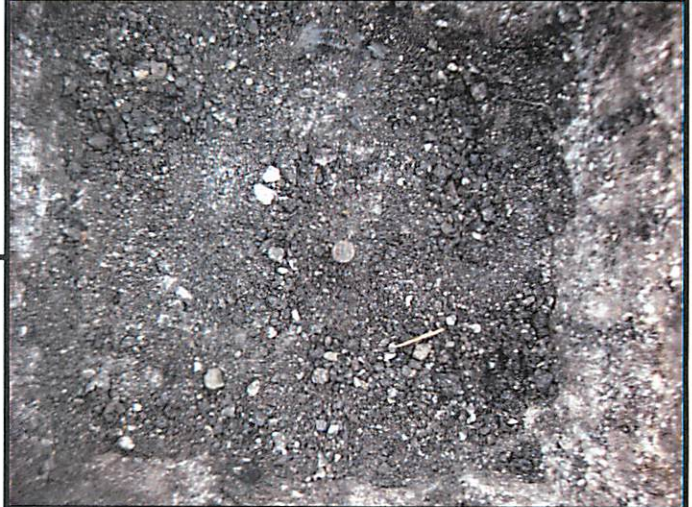
DATUM:



DATE / WEATHER / TEMP:
MAY 2, 2016
OVERCAST - N-NE
52° F

MONUMENT INFORMATION

MONUMENT TYPE: FD. 7/8" Ø IRON PIN
ON SURFACE - BELOW: 0.71'
LEFT - CL PAV'T - RIGHT: 1.50'



MISC. INFORMATION

IRON PIN SET OVER FOUND STONE ON AUGUST 15,
1965 PER STONE RECORDS.

MAY 2, 2016

SET MONUMENT BOX
OVER FOUND IRON PIN

