

# OTTAWA COUNTY ENGINEERS OFFICE

REFERENCE NO. 28-7-15-G  
SW CORNER POST SEC. 28  
CARROLL TWP.  
SHEET 1 OF 1.

**PERSONNEL:**

M. WITTMAN, P.S.  
J. ALLEN  
E. KOCH  
S. HUSS - ODOT  
M. CANTERBURY - ODOT

**DATE / WEATHER / TEMP:**

MARCH 29, 2010  
SUNNY  
59° F

ROUTE: STATE ROUTE #19  
@ C-98 SALEM - CARROLL RD.

TOWNSHIP: CARROLL

SECTION: 28

T 7 N R 15 E.

NORTHING:

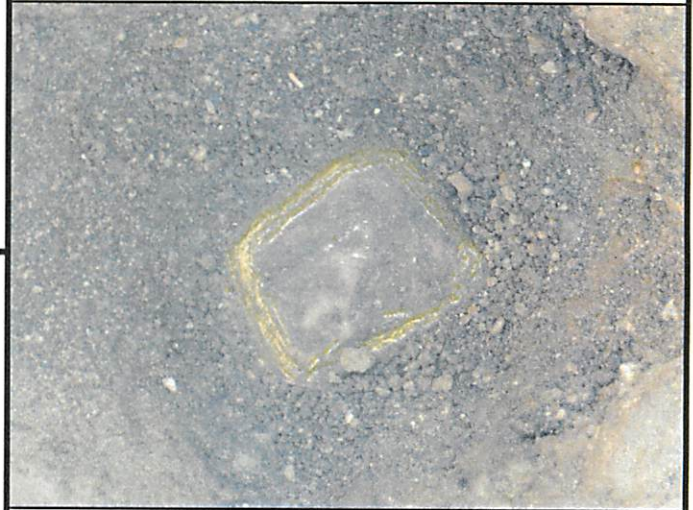
EASTING:

DATUM:



MONUMENT INFORMATION

MONUMENT TYPE: FD. 6"x7-1/2" FLAT TOP  
LIMESTONE  
ON SURFACE - BELOW: 2.39'  
LEFT - CL PAVT - RIGHT: 3.50'  
  
USED CENTER OF STONE



MISC. INFORMATION

STONE PREVIOUSLY FOUND BY R.C. STEINMILLER,  
RS, J. UNDERWOOD AND T. THORBAHN ON 5-23-84.  
  
FD. RR SPK ON SIDE 2.0' BELOW SURFACE.

MARCH 29, 2010

SET 1" SQUARE IRON PIN  
IN ROUND ODOT MONUMENT  
BOX OVER STONE

