

OTTAWA COUNTY ENGINEERS OFFICE

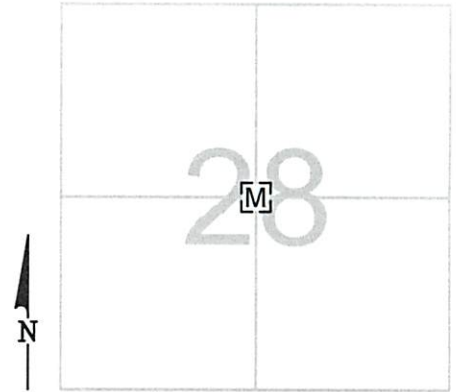
REFERENCE NO. 28-7-15-E
INTERIOR CORNER POST SEC. 28
CARROLL TWP.
SHEET 1 OF 1.

ROUTE: T-97 BIER RD.
TOWNSHIP: CARROLL
SECTION: 28
T 7 NR 15 E.

PERSONNEL:
M. WITTMAN, P.S.
J. ALLEN
E. KOCH
C. MILLER

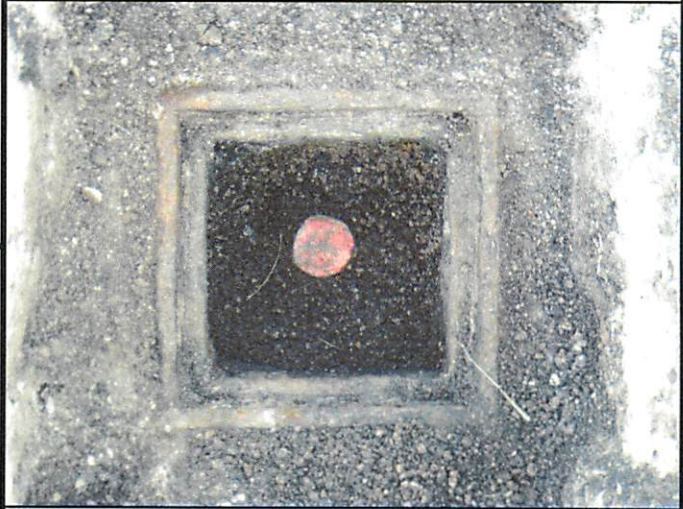
NORTHING:
EASTING:
DATUM:

DATE / WEATHER / TEMP:
MARCH 30, 2010
SUNNY - S
68° F



MONUMENT INFORMATION

MONUMENT TYPE: FD. 1-1/2" Ø IRON PIN IN
MONUMENT BOX
ON SURFACE - BELOW: 0.42'
LEFT - CL PAVT - RIGHT: 2.93'



MISC. INFORMATION

4-30-2010 - PLACED RISERS ON BOX AND BROUGHT
TO SURFACE.

