

OTTAWA COUNTY ENGINEERS OFFICE

REFERENCE NO. 26-7-15-G
SW CORNER POST SEC. 26
CARROLL TWP.
SHEET 1 OF 1.

PERSONNEL:
M. WITTMAN, P.S.
J. ALLEN

DATE / WEATHER / TEMP:
OCTOBER 15-2010
OVERCAST - NW
62° F

ROUTE: C-98 SALEM - CARROLL RD.
@ T-101 LEUTZ RD.

TOWNSHIP: CARROLL

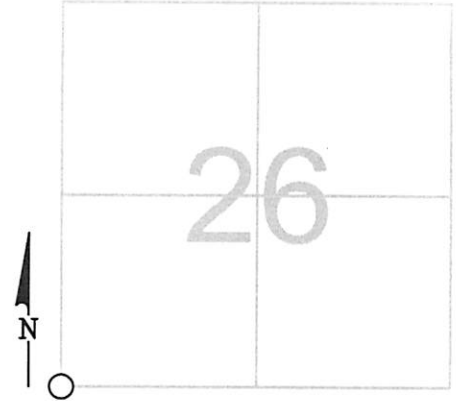
SECTION: 26

T 7 N R 15 E.

NORTHING:

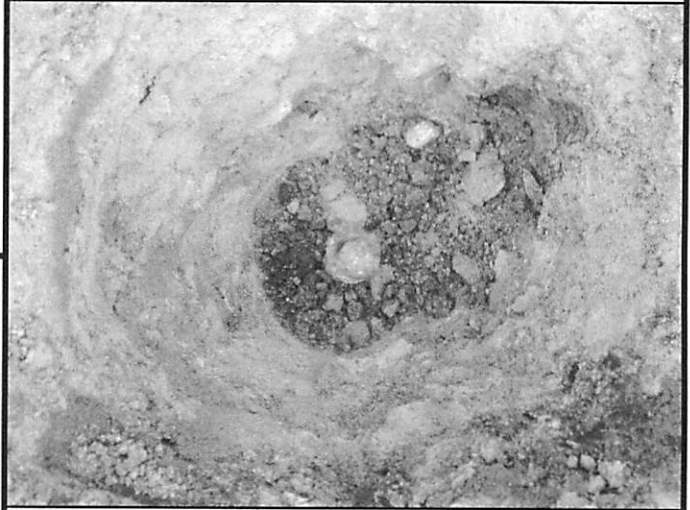
EASTING:

DATUM:



MONUMENT INFORMATION

MONUMENT TYPE: FD. 1/2" Ø IRON PIN IN
CONCRETE
ON SURFACE - BELOW: 0.56'
LEFT - CL PAV'T - RIGHT: 1.30'



MISC. INFORMATION

IRON PIN POSSIBLY SET BY JAMES C. ANDRUS, R.S.
4838 IN JANUARY 1973 (SEE OCE SURVEY FILE
1-12-83). IRON PIN MATCHED P.K. NAIL FOUND ON
SURFACE. IRON PIN ALSO MATCHED DISTANCES
NORTH AND WEST ON SURVEY BY DeWITT IN
SURVEY RECORD BOOK 3 PAGE 345.

OCTOBER 5, 2010

SET MONUMENT BOX OVER
IRON PIN

