

# OTTAWA COUNTY ENGINEERS OFFICE

REFERENCE NO. 26-7-15-E  
 CENTER POST SEC. 26  
 CARROLL TWP.  
 SHEET 1 OF 1.

ROUTE: T-97 BIER RD.  
 @ T-103 ATWATER RD.

TOWNSHIP: CARROLL

SECTION: 26

T 7 NR 15 E.

PERSONNEL:  
 M. WITTMAN, P.S.  
 J. ALLEN

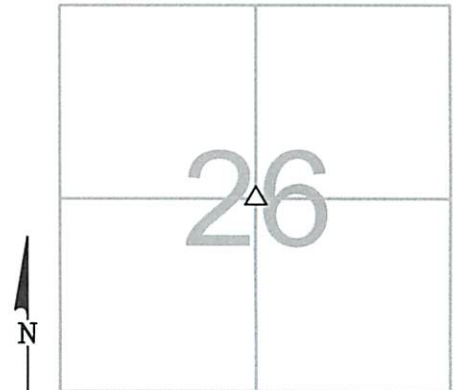
NORTHING:

EASTING:

DATUM:

DATE / WEATHER / TEMP:

JUNE 26, 2012  
 SUNNY - NE  
 80° F



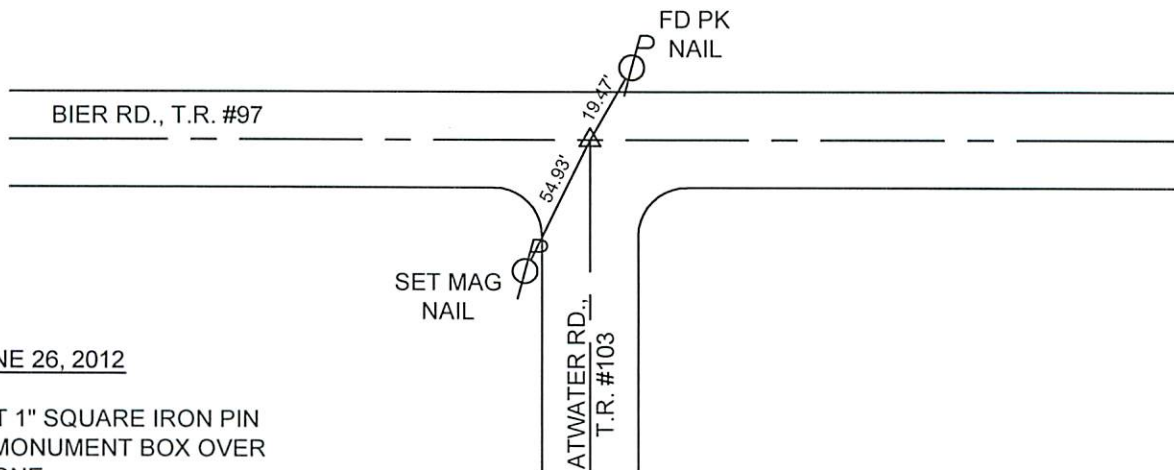
### MONUMENT INFORMATION

MONUMENT TYPE: FD LIMESTONE W/ DRILL HOLE  
 ON SURFACE - BELOW: 1.54'  
 LEFT - CL PAV'T - RIGHT: 0.80'  
  
 FOOTBALL SHAPED STONE 3-1/2" X 8" X 9-1/2"



### MISC. INFORMATION

FD PK NAIL 0.22' BELOW SURFACE. TIED WITH  
 X-TIES AND DUG FOR STONE. USED DRILL HOLE IN  
 STONE. PK NAIL WAS 0.02' E OF DRILL HOLE. THERE  
 WAS ALSO A 1" SQ. WOODEN HUB ON SOUTH SIDE  
 OF STONE.



JUNE 26, 2012

SET 1" SQUARE IRON PIN  
 IN MONUMENT BOX OVER  
 STONE