

OTTAWA COUNTY ENGINEERS OFFICE

REFERENCE NO. 26-7-15-A
 NW QUARTER POST SEC. 26
 CARROLL TWP.
SHEET 1 OF 1.

ROUTE: T-15 CAMP PERRY WESTERN RD.
 @ T-101 LEUTZ RD.

TOWNSHIP: CARROLL

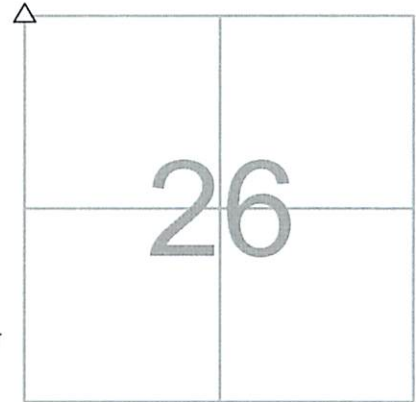
SECTION: 26

T 7 **NR** 15 **E.**

NORTHING:

EASTING:

DATUM:



PERSONNEL:
 M. WITTMAN, P.S.
 J. ALLEN
 J. TIMMONS

DATE / WEATHER / TEMP:
 MAY 13, 2016
 SUNNY - NW
 61° F

MONUMENT INFORMATION

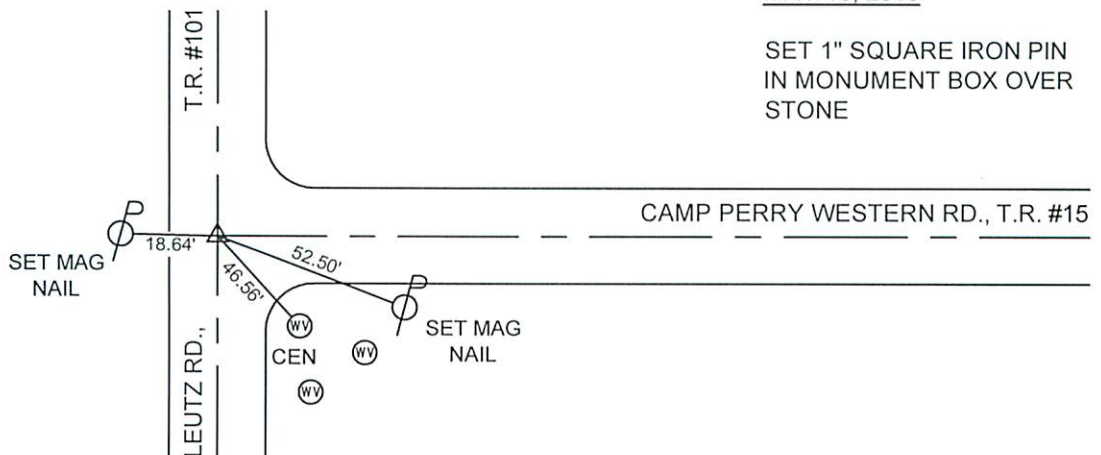
MONUMENT TYPE: FD 16" x 16" LIMESTONE
 ON SURFACE - BELOW: 1.73'
LEFT - CL PAV'T - RIGHT: 1.60'

FD STONE HAS DRILL HOLE, USED DRILL HOLE.
 ALSO A 1" x 1" WOOD STAKE WAS FOUND ON NW
 CORNER OF STONE.



MISC. INFORMATION

FD OLD RUSTED PK NAIL ON SURFACE, TIED W/
 X-TIES AND DUG FOR STONE. FD PK NAIL WAS 0.04'
 SOUTH OF DRILL HOLE USED ON STONE.



MAY 13, 2016

SET 1" SQUARE IRON PIN
 IN MONUMENT BOX OVER
 STONE