

OTTAWA COUNTY ENGINEERS OFFICE

REFERENCE NO. 25-7-15-F
 E. QUARTER POST SECTION 25
 CARROLL TWP.
SHEET 1 OF 1.

ROUTE: C-26 CARROLL - ERIE RD. @
 T-97 BIER RD.

TOWNSHIP: CARROLL

SECTION: 25

T 7 **NR** 15 **E.**

NORTHING:

EASTING:

DATUM:

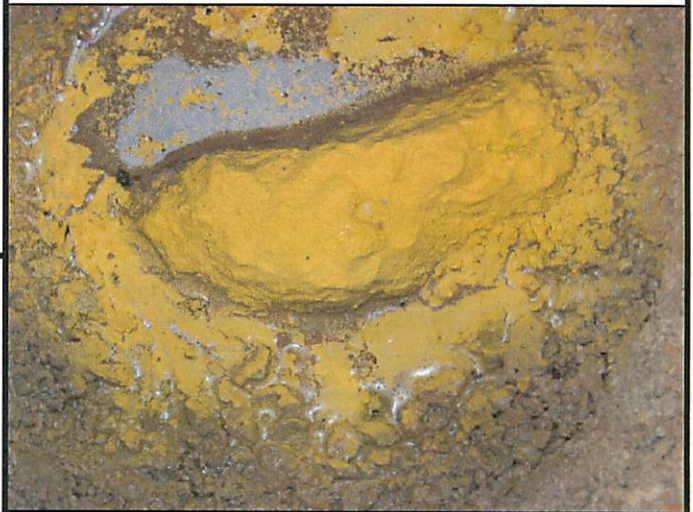


PERSONNEL:
 M. WITTMAN, P.S.
 M. SANDRETTO
 M. WILKINS

DATE / WEATHER / TEMP:
 JUNE 23, 2005
 SUNNY
 84° F

MONUMENT INFORMATION

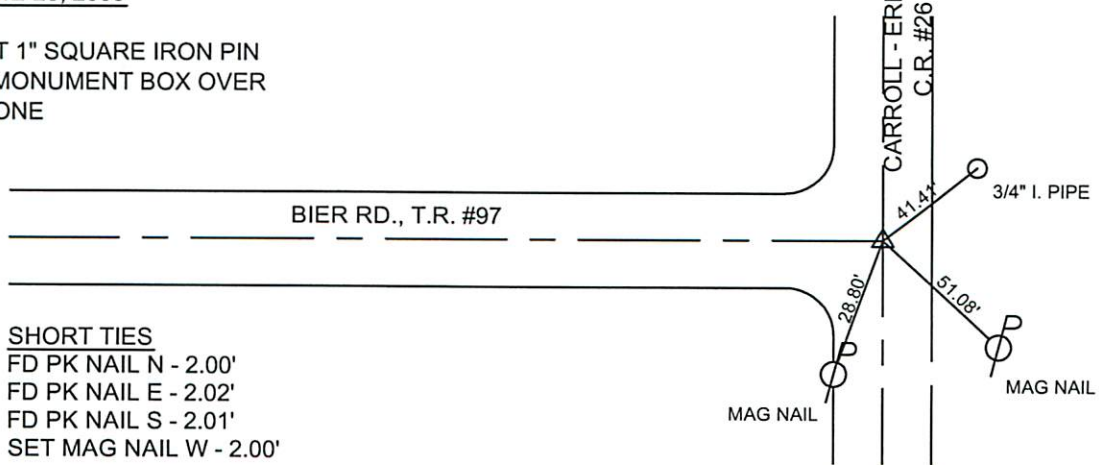
MONUMENT TYPE: FD LIMESTONE W/ DRILL HOLE
 ON SURFACE - BELOW: 1.74'
 LEFT - CL PAV'T - RIGHT: (C-26)
 RECTANGULAR STONE: 2½" x 6½"
 USED FD DRILL HOLE.



MISC. INFORMATION

JUNE 23, 2005

SET 1" SQUARE IRON PIN
 IN MONUMENT BOX OVER
 STONE



SHORT TIES
 FD PK NAIL N - 2.00'
 FD PK NAIL E - 2.02'
 FD PK NAIL S - 2.01'
 SET MAG NAIL W - 2.00'