

# OTTAWA COUNTY ENGINEERS OFFICE

REFERENCE NO. 25-7-15-E  
CENTER POST SEC. 25  
CARROLL TWP.  
SHEET 1 OF 1.

ROUTE: T-97 BIER RD.  
@ T- 105 BROKATE RD.

TOWNSHIP: CARROLL

SECTION: 25

T 7 NR 15 E.

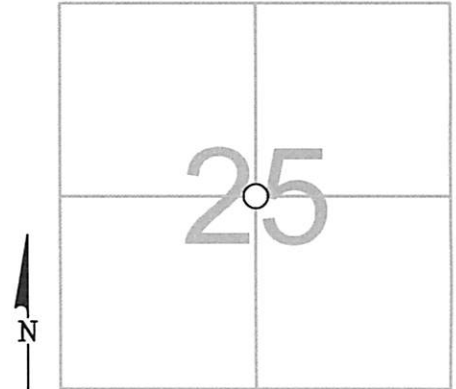
NORTHING:

EASTING:

DATUM:

PERSONNEL:  
M. WITTMAN, P.S.  
J. ALLEN

DATE / WEATHER / TEMP:  
JUNE 14, 2012  
SUNNY - NE  
74° F



## MONUMENT INFORMATION

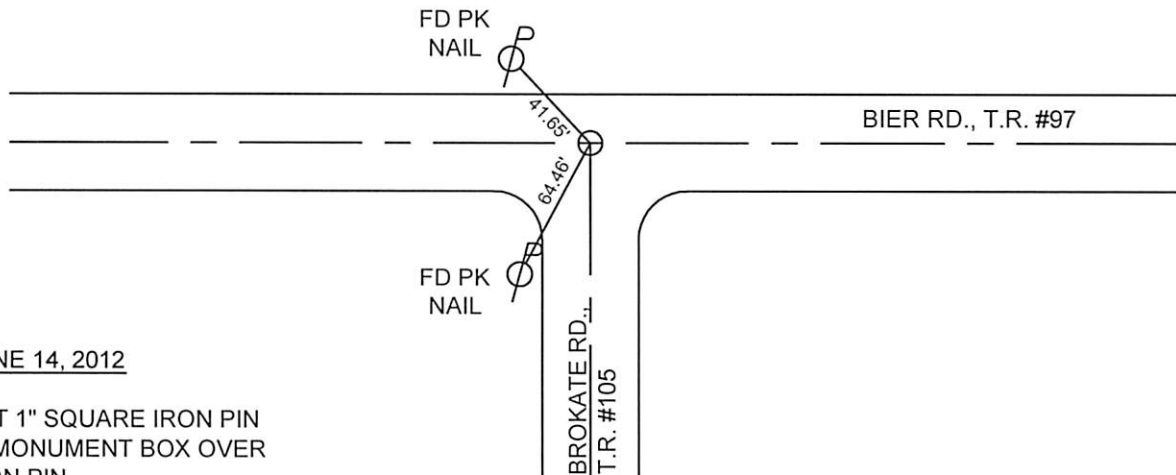
MONUMENT TYPE: FD 1-1/4" Ø IRON PIN W/ FAINT HOLE  
ON SURFACE - BELOW: 1.62'  
LEFT - CL PAV'T - RIGHT: 1.00'

SET OFFSET PIN OVER ORIGINAL PIN TO BRING POINT  
CLOSER TO SURFACE



## MISC. INFORMATION

FD PK NAIL ON SURFACE. TIED W/ X-TIES AND DUG  
FOR PIN PER COUNTY REFERENCES. PK NAIL WAS  
0.03' W AND 0.01' N OF FAINT HOLE IN PIN. FAINT  
HOLE WAS IN CENTER OF PIN.



JUNE 14, 2012

SET 1" SQUARE IRON PIN  
IN MONUMENT BOX OVER  
IRON PIN