

OTTAWA COUNTY ENGINEERS OFFICE

REFERENCE NO. 21-7-15-F
 EAST QUARTER POST SECTION
 21 CARROLL TWP.
SHEET 1 OF 1.

ROUTE: T-102 BEHLMAN RD. @
 T-96 GENZMAN RD.

TOWNSHIP: CARROLL

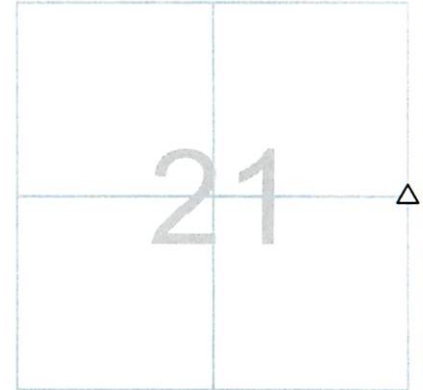
SECTION: 21

T 7 **NR** 15 **E.**

NORTHING:

EASTING:

DATUM:

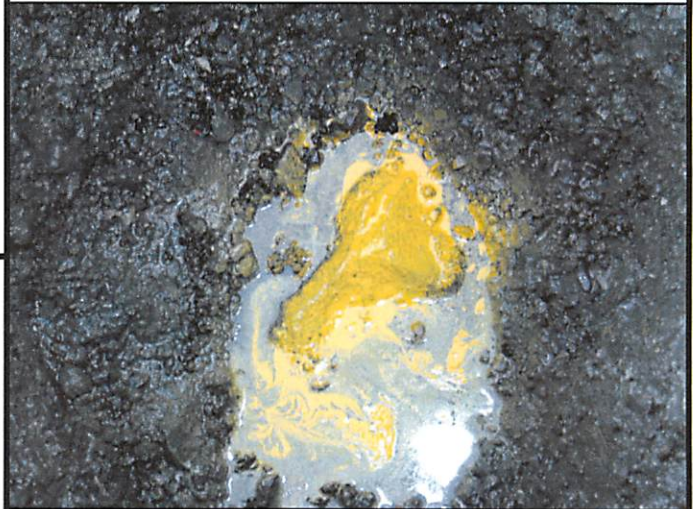


PERSONNEL:
 M. WITTMAN, P.S.
 J. HAYES - BEC
 K. LENKE

DATE / WEATHER / TEMP:
 APRIL 26, 2005
 CLOUDY S-SW
 53° F

MONUMENT INFORMATION

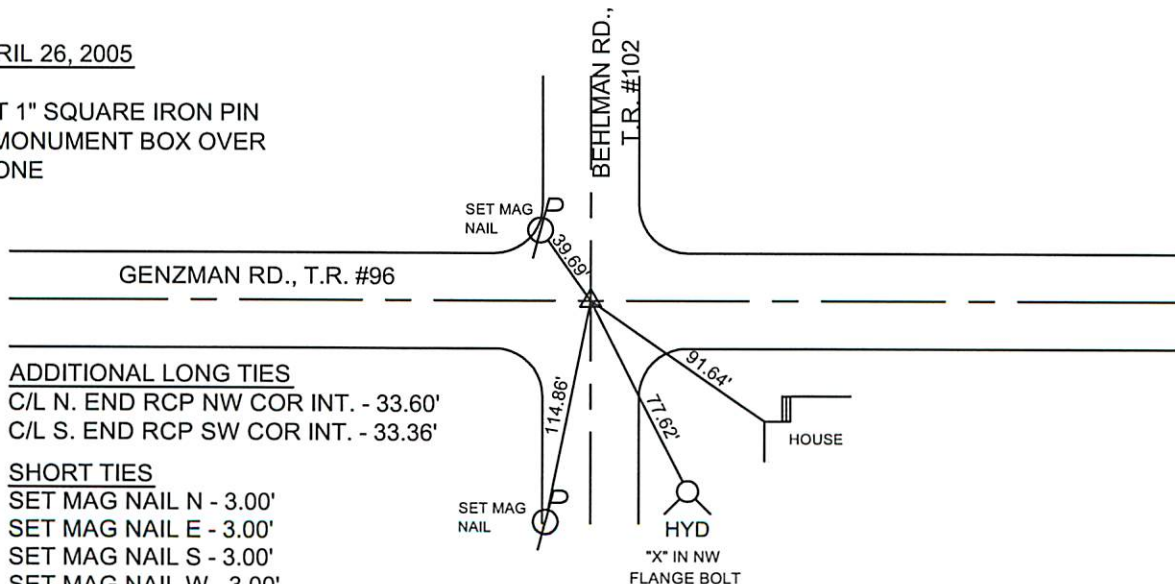
MONUMENT TYPE: FD POINTED LIMESTONE
 ON SURFACE - BELOW: 1.91'
LEFT - CL PAV'T - RIGHT: (T-102)
 RECTANGULAR STONE: 4" E-W x 5" N-S



MISC. INFORMATION

APRIL 26, 2005

SET 1" SQUARE IRON PIN
 IN MONUMENT BOX OVER
 STONE



ADDITIONAL LONG TIES
 C/L N. END RCP NW COR INT. - 33.60'
 C/L S. END RCP SW COR INT. - 33.36'

SHORT TIES
 SET MAG NAIL N - 3.00'
 SET MAG NAIL E - 3.00'
 SET MAG NAIL S - 3.00'
 SET MAG NAIL W - 3.00'