

# OTTAWA COUNTY ENGINEERS OFFICE

REFERENCE NO. 18-7-15-H  
 SOUTH QUARTER POST SEC. 18  
 CARROLL TWP.  
 SHEET 1 OF 1.

ROUTE: T-94 STRICKLE-TOUSSAINT RD.

TOWNSHIP: CARROLL

SECTION: 18

T 7 NR 15 E.

PERSONNEL:  
 M. WITTMAN, P.S.  
 J. ALLEN

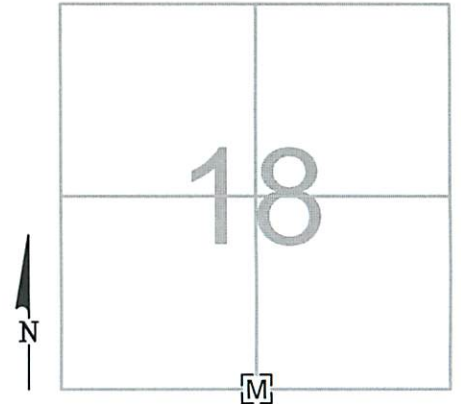
NORTHING:

EASTING:

DATUM:

DATE / WEATHER / TEMP:

APRIL 4, 2013  
 SUNNY - SE  
 50° F



### MONUMENT INFORMATION

MONUMENT TYPE: FD. 1/2" SQ IRON PIN IN MON BOX  
 ON SURFACE - BELOW: 0.34'  
 LEFT - CL PAV'T - RIGHT: 5.0'



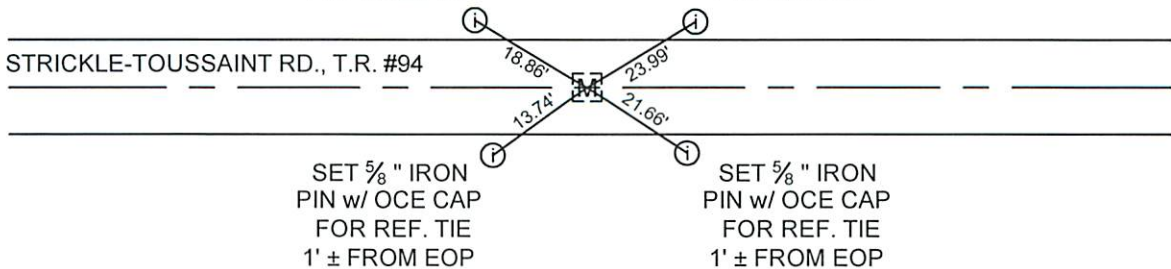
### MISC. INFORMATION

MARCH 4, 2013

PLACED RISERS TO BRING  
 TO SURFACE

SET 5/8" IRON  
 PIN w/ OCE CAP  
 FOR REF. TIE  
 1' ± FROM EOP

SET 5/8" IRON  
 PIN w/ OCE CAP  
 FOR REF. TIE  
 1' ± FROM EOP



SET 5/8" IRON  
 PIN w/ OCE CAP  
 FOR REF. TIE  
 1' ± FROM EOP

SET 5/8" IRON  
 PIN w/ OCE CAP  
 FOR REF. TIE  
 1' ± FROM EOP