

OTTAWA COUNTY ENGINEERS OFFICE

REFERENCE NO. 16-7-15-1
SOUTHEAST CORNER SEC. 16
CARROLL TWP.
SHEET 1 OF 1.

ROUTE: T-102 BEHLMAN RD. @
T-95 FICK RD.

TOWNSHIP: CARROLL

SECTION: 16

T 7 NR 15 E.

PERSONNEL:

M. WITTMAN, P.S.
J. ALLEN
C. MILLER, E. KOCH
J. HAYES, D. TORIS, JR. - BEC

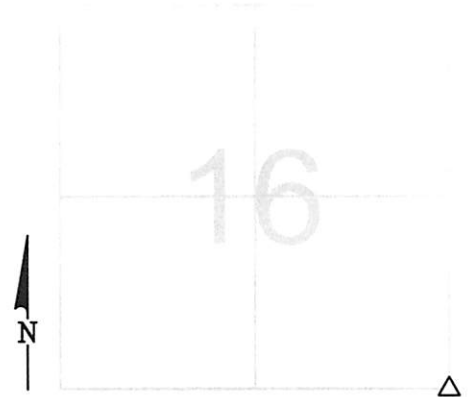
NORTHING:

EASTING:

DATUM:

DATE / WEATHER / TEMP:

JUNE 25, 2009
SUNNY NE
85° F



MONUMENT INFORMATION

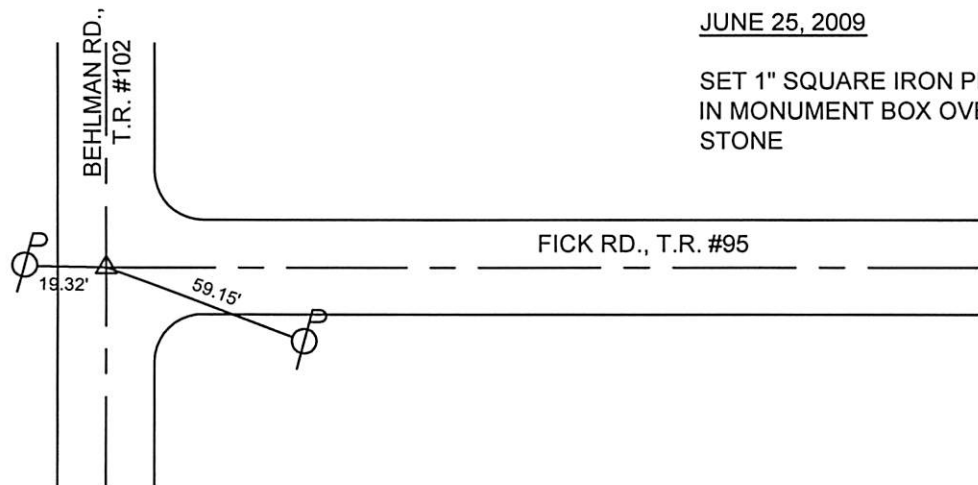
MONUMENT TYPE: FD LIMESTONE W/ NOTCH
ON SURFACE - BELOW: 1.38'
LEFT - CL PAV'T - RIGHT: 2.65'
RECTANGULAR STONE: 12" x 6 1/2"
ALSO HAD 1 1/2" x 1 1/2" WOOD HUB IN WEST SIDE OF
STONE INLINE WITH E-W NOTCH.

USED CENTER OF NOTCH ON N/S CENTERLINE OF STONE.



MISC. INFORMATION

FD. MAG NAIL AND WASHER W/ CROSS TIES ON
SURFACE. REMOVED NAIL AND WASHER AND
DUG FOR STONE. FD. RAILROAD SPIKE 0.73'
BELOW SURFACE. RR SPIKE WAS 0.05' EAST OF
MAG NAIL AND WASHER. MAG NAIL AND
WASHER WAS 0.33' NORTH OF NOTCH IN STONE,



JUNE 25, 2009

SET 1" SQUARE IRON PIN
IN MONUMENT BOX OVER
STONE