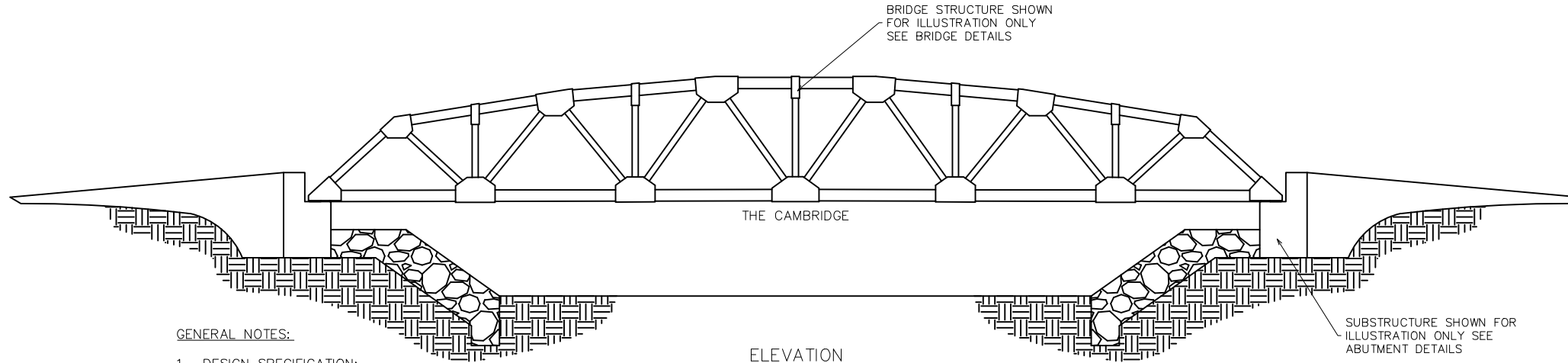


DATE PLOTTED October 12, 2009

S:\JOBS\OHIO\OTTAWA\41774-Ottawa Co.-Lemon Rd.-Galv.Truss 86'x24'Drawings\Revisions\1258-ASBUILT.dwg



# PREFABRICATED STEEL TRUSS BRIDGE OTTAWA COUNTY, OHIO



ELEVATION

**PROJECT DESIGN CRITERIA**

SPAN - 86'-0" C/C BEARINGS

DECK WIDTH - 24'-0"

DESIGN LIVE LOAD - HS20-44

DESIGN LOADS:	
STEEL FLOOR	15 PSF
ASPHALT FLOOR	60 PSF
FUTURE WEARING SURFACE	25 PSF
<b>TOTAL</b>	<b>100 PSF</b>

TRUSS SHOE REACTION:	
DEAD LOAD	68.43K
LIVE LOAD (HS-20-44)	69.3K
IMPACT	16.4K
<b>TOTAL</b>	<b>154.13K</b>

EXPANSION - N/A

CONNECTIONS - FIELD BOLTED

**GENERAL NOTES:**

- DESIGN SPECIFICATION:**  
AASHTO STANDARD SPECIFICATIONS FOR HIGHWAY BRIDGES, 17th EDITION (2002), DIVISION I, WITH ALL INTERIM SPECIFICATIONS IN EFFECT.
- MATERIAL:**  
ALL SUPERSTRUCTURE STEEL SHALL BE ASTM A709, GRADE 50 (A572). UNLESS NOTED OTHER. ALL STEEL GALVANIZED AFTER FABRICATION. ALL FASTENERS SHALL BE 1-1/8" Ø, 7/8" Ø HIGH STRENGTH BOLTS, ASTM A325 TYPE 1 (GALV.). UNLESS NOTED OTHERWISE. WITH ASTM A563 GRADE DH OR DH3 NUT AND ONE ASTM F436 WASHER PER BOLT. FASTENERS SHALL BE FURNISHED WITH ROTATIONAL CAPACITY TEST.  
  
FLOOR BEAMS, STRINGERS, BOTTOM CHORD GUSSET PLATES, BOTTOM CHORD & DIAGONALS REQUIRE NFC ZONE 2 CVN (15 FT-LBS @ 40°F)
- CONSTRUCTION/FABRICATION:**  
AASHTO STANDARD SPECIFICATIONS FOR HIGHWAY BRIDGES, 17th EDITION (2002), DIVISION II, WITH ALL INTERIM SPECIFICATIONS IN EFFECT.
- WELDING:**  
ALL WELDING SHALL BE IN ACCORDANCE WITH AASHTO/AWS D1.5 BRIDGE WELDING CODE.  
  
NON-DESTRUCTIVE TESTS OF ALL WELDS SHALL BE PERFORMED AS FOLLOWS:  
FILLET WELDS - VISUAL - 100%  
- MT. - 10% MIN PER AWS D1.5
- FLOORING:**  
3" x 9" 5GA. CORRUGATED STEEL FLOORING ASTM A-570 STEEL SHEET SECTION MODULUS 5.206 IN<sup>3</sup> /PLANK. SHALL BE INSTALLED IN 18" LAYING WIDTHS.
- ANCHOR BOLTS**  
THE ANCHOR BOLTS SHALL BE EITHER BE CAST-IN-PLACE DURING ABUTMENT CONSTRUCTION OR DRILLED AND ANCHORED TO THE ABUTMENTS AFTER THE BRIDGE IS ERECTED. THE ANCHOR BOLTS ARE TO BE ANCHORED USING EPCON A7 FAST CURING ACRYLIC ADHESIVE OR EQUAL. EPCON A7 IS A PRODUCT OF ITW RED HEAD, 2171 EXECUTIVE DRIVE, ADDISON, IL 60101 PHONE:603-350-0370. THE ACRYLIC ADHESIVE IS FURTHER DESCRIBED AS A TWO COMPONENT METHYL METHACRYLATE ADHESIVE, NON-SAG PASTE, MOISTURE INSENSITIVE WHEN CURED, DARK GREY IN COLOR. MEETS ASTM C881-90, TYPE IV, GRADE 3, CLASS A,B, AND C WITH THE EXCEPTION OF GEL TIME AND EPOXY CONTENT.
- PROFILE GRADE**  
SLOPE IS ASSUMED TO BE 0%. MEMBERS AND BEARING PLATES ARE FABRICATED TO FIT UP ACCURATELY. UP TO A GRADE OF 1.5%. IF PROFILE GRADE EXCEEDS 1.5%, THE FABRICATOR SHALL BE NOTIFIED.

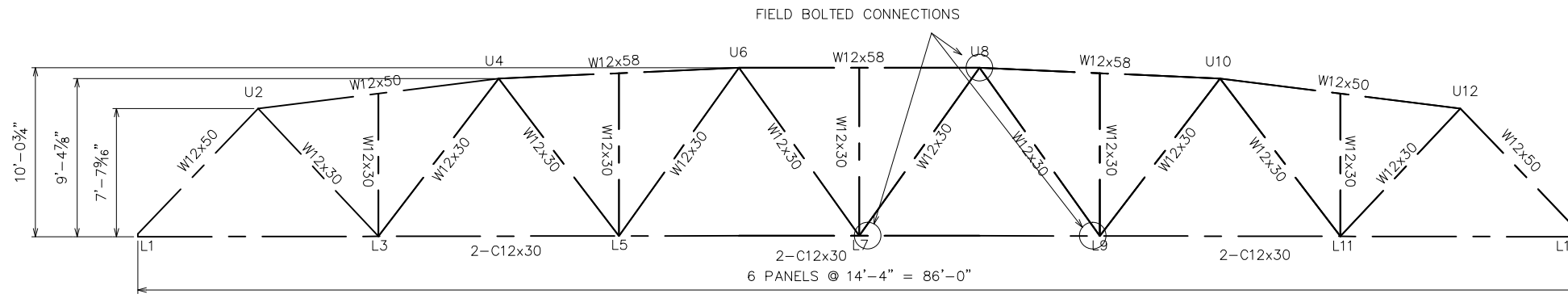
**REVISED**  
SEE REVISION TABLE  
10-12-09

NO:	DATE:	REVISIONS:	BY:
1	07-29-09	BACKWALL & BEARINGS	JDH
2	08-03-09	BOTTOM CHORD & GUSSET PLATES	JDH
3	10-12-09	AS BUILT	JEC

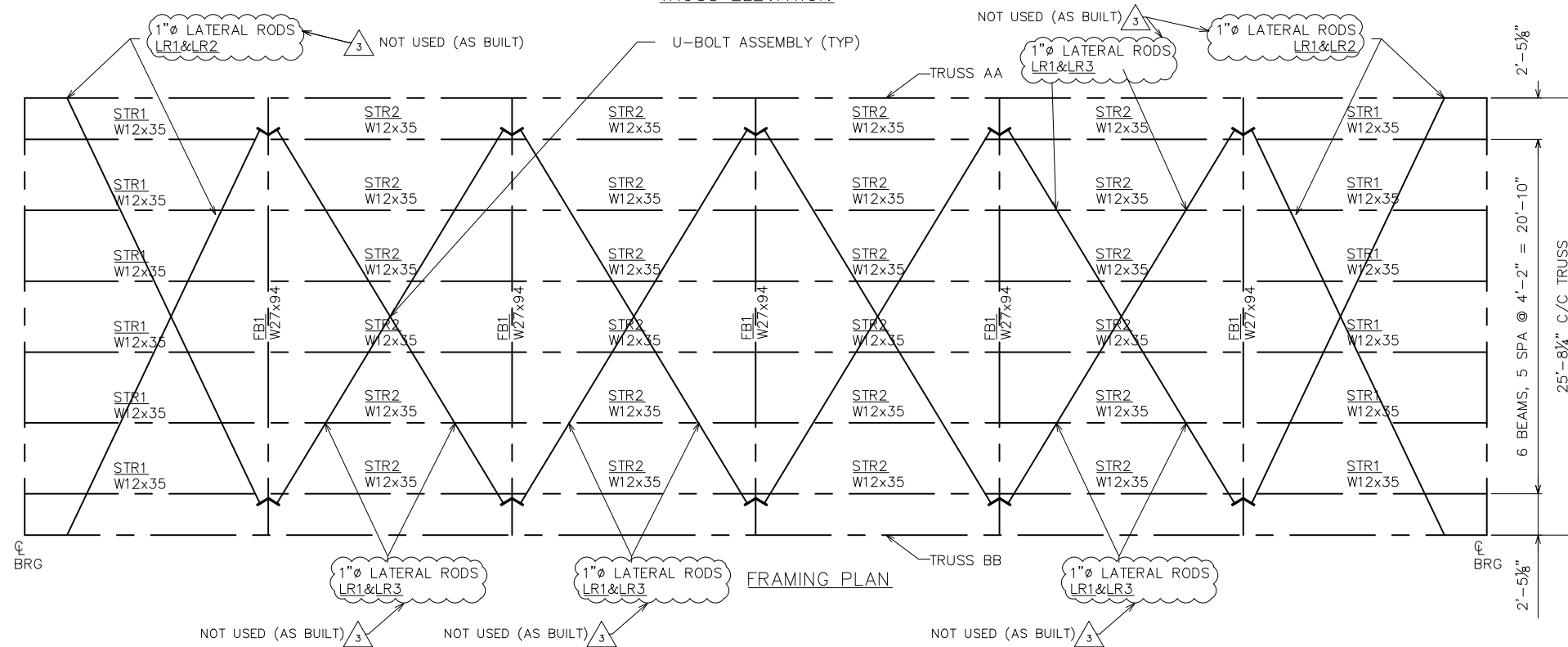
SUBMITTAL LOG		DATE
INITIAL SUBMITTAL		06-10-09
RESUBMITTAL		-
CUSTOMER APPROVAL		06-22-09
SHOP REVIEW		06-22-09
PRE FAB MTG		-
APPROVED FOR FAB		07-09-09

		OTT-LEMON ROAD	
LEMON ROAD GALVANIZED TRUSS OTTAWA COUNTY, OH			SHEET NO. <b>1</b>
DESIGN: AG	DRAW: JDH	REVIEW: SAF	CHECK: DLM
JOB# 41774			TOTAL 14

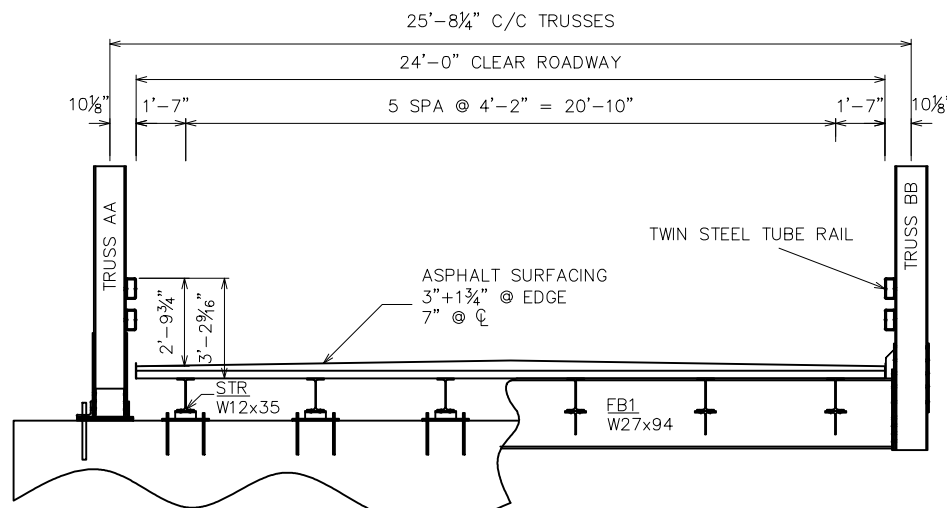
NOTE: DRAWINGS RELATIVE DO NOT SCALE



TRUSS ELEVATION



FRAMING PLAN



TRANSVERSE SECTION

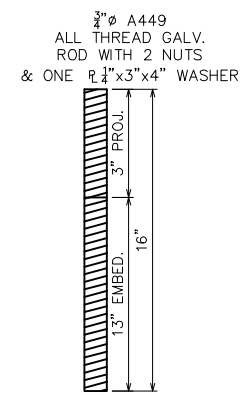
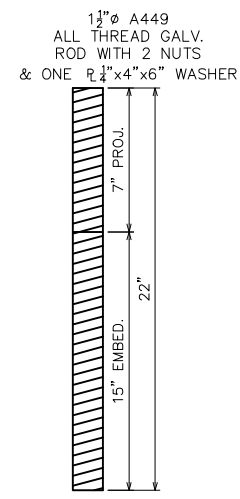
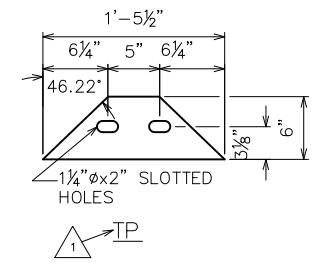
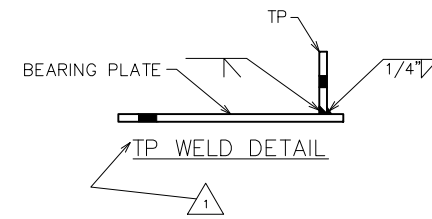
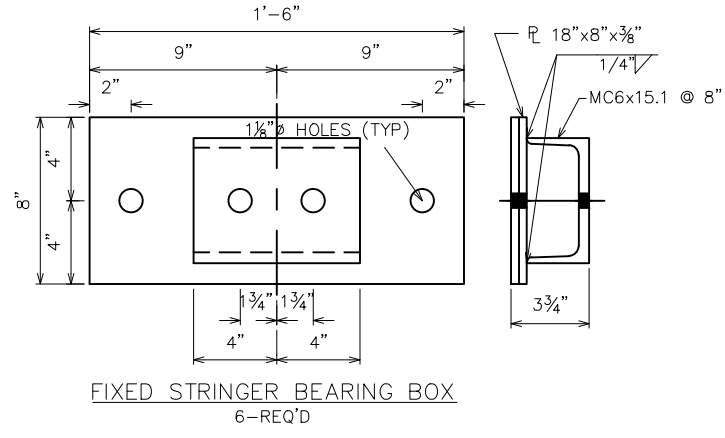
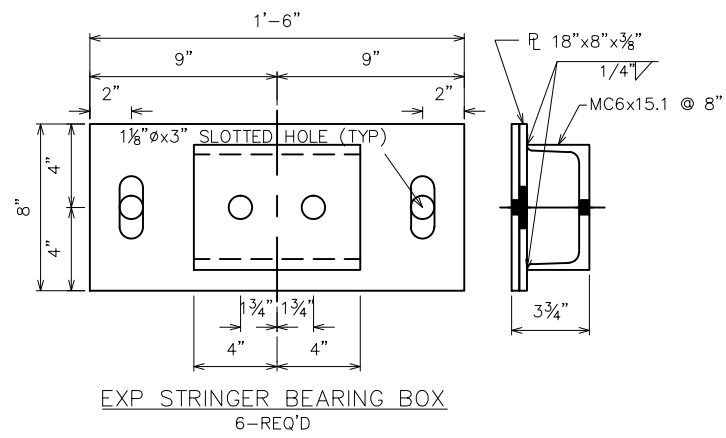
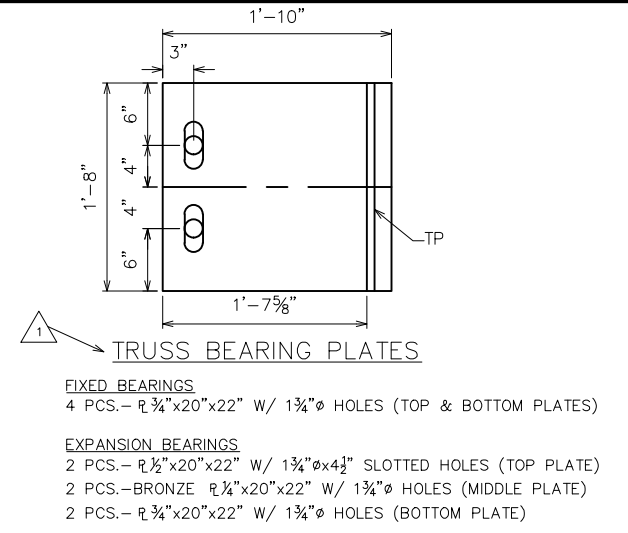
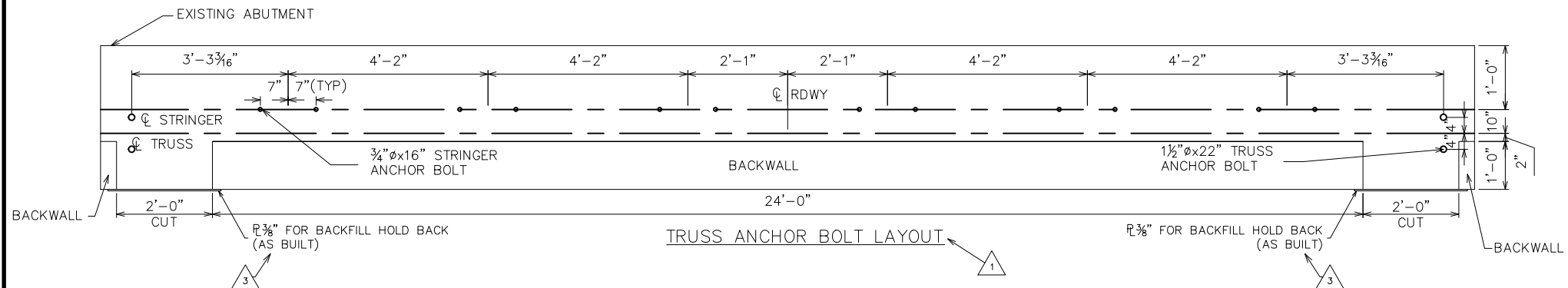
**REVISED**  
SEE REVISION TABLE  
10-12-09

CURRENT REVISION- 10-12-09		CURRENT SUBMITTAL- 07-09-09	
FABRICATOR U.S. BRIDGE & METAL WORK INC 118		OTT-LEMON ROAD	
LEMON ROAD GALVANIZED TRUSS OTTAWA COUNTY, OH			SHEET NO. <b>2</b>
DESIGN: AG	DRAW: JDH	REVIEW: SAF	CHECK: DLM
JOB# 41774			TOTAL 14
<b>FRAMING PLAN</b>			

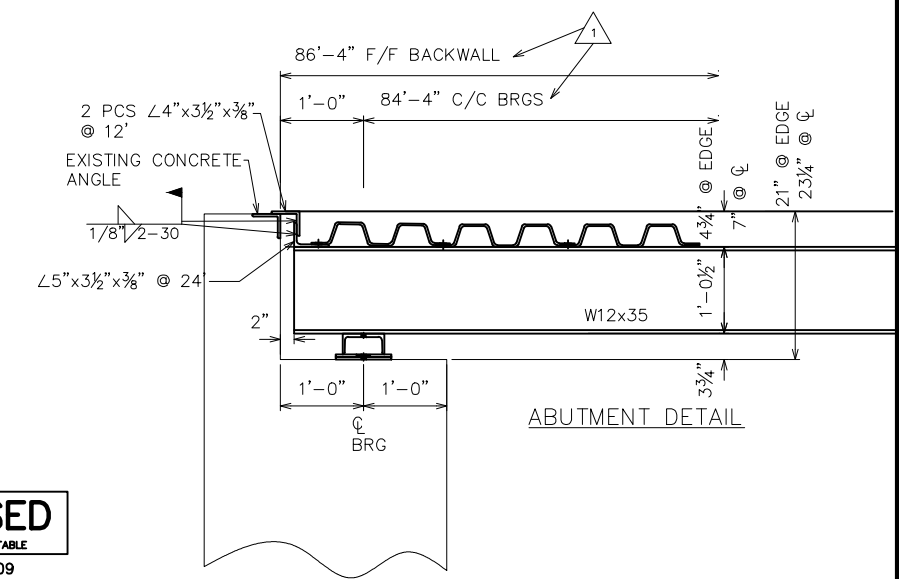
NOTE: DRAWINGS RELATIVE DO NOT SCALE

DATE PLOTTED October 12, 2009

S:\JOBS\OHIO\OTTAWA\41774-Ottawa Co.-Lemon Rd.-Galv.Truss 86'x24'Drawings\Revisions\1258-ASBULLT.dwg



REVISED  
SEE REVISION TABLE  
10-12-09

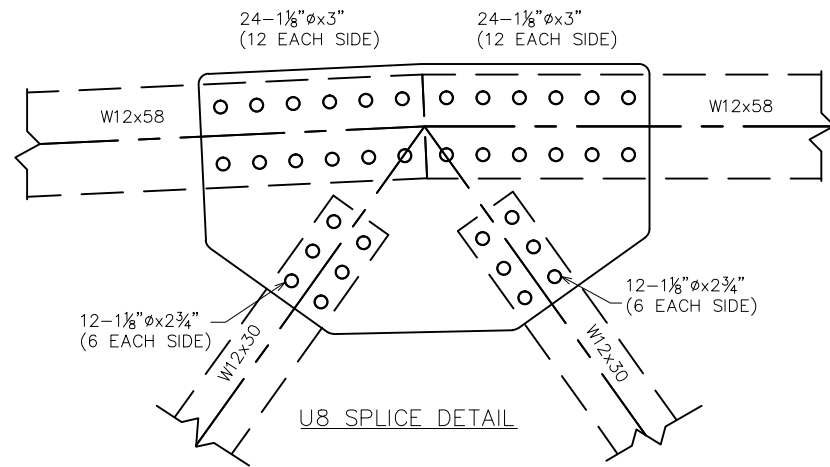


NOTE: DRAWINGS RELATIVE DO NOT SCALE

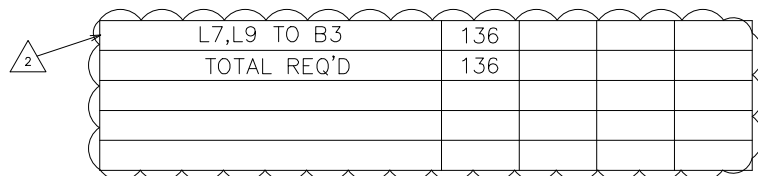
CURRENT REVISION- 10-12-09		CURRENT SUBMITTAL- 07-09-09	
FABRICATOR U.S. BRIDGE & MOBILE MACH. INC. 114		OTT-LEMON ROAD	
LEMON ROAD GALVANIZED TRUSS OTTAWA COUNTY, OH		SHEET NO. 3	
DESIGN: AG	DRAW: JDH	REVIEW: SAF	CHECK: DLM
JOB# 41774		TOTAL 14	
ABUTMENT DETAILS			

DATE PLOTTED October 12, 2009

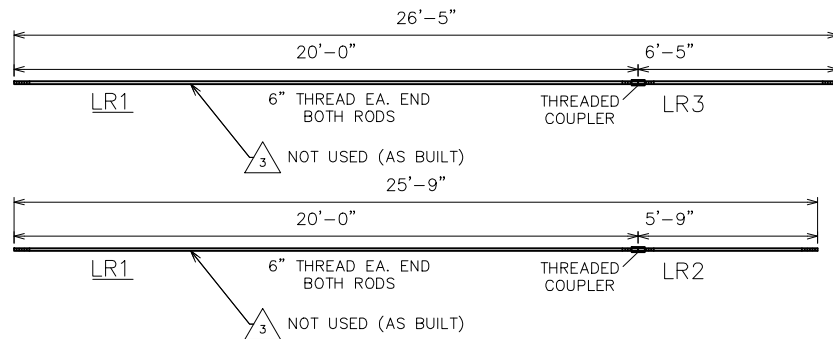
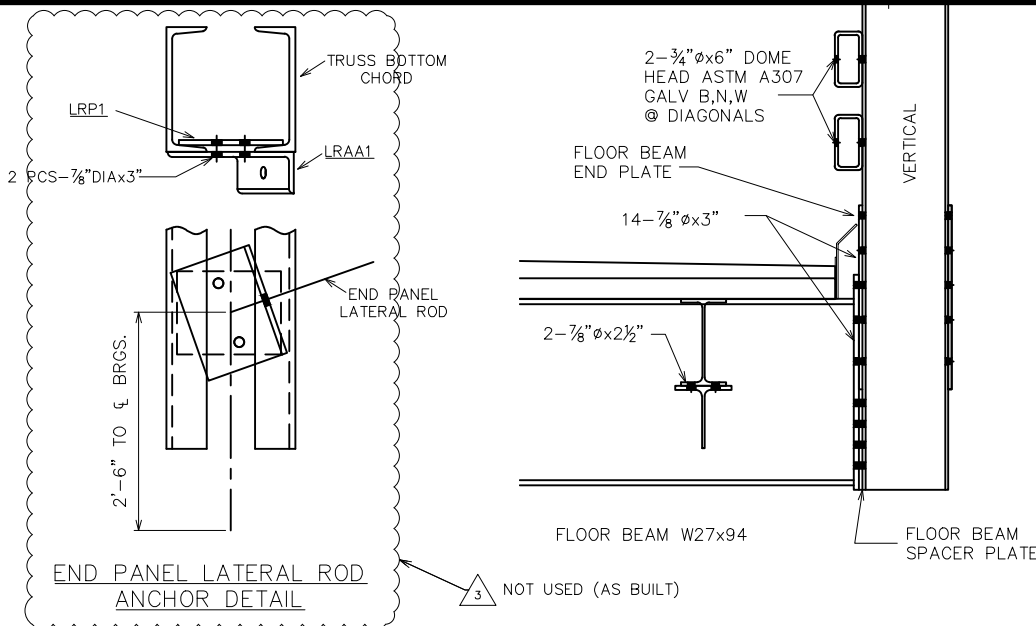
S:\JOBS\OHIO\OTTAWA\41774-Ottawa Co.-Lemon Rd.-Galv.Truss 86'x24'Drawings\Revisions\1258-ASBUILT.dwg



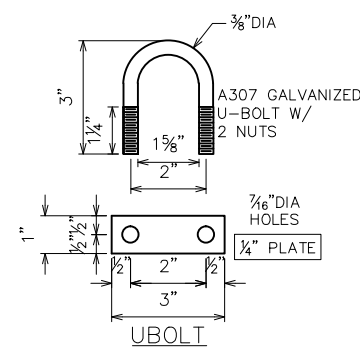
FIELD ASSEMBLY BOLT CHART		1 1/8" A325 TYPE 1 GALV.			
LOCATION		BOLT LENGTH			
		2 3/4"	3"	3 1/4"	3 3/4"
U8 SPLICE		48	96		
TRUSS BRG ANGLE TO TRUSS					8
TRUSS PLATE TO TRUSS					8
TOTAL REQ'D		48	96	0	16



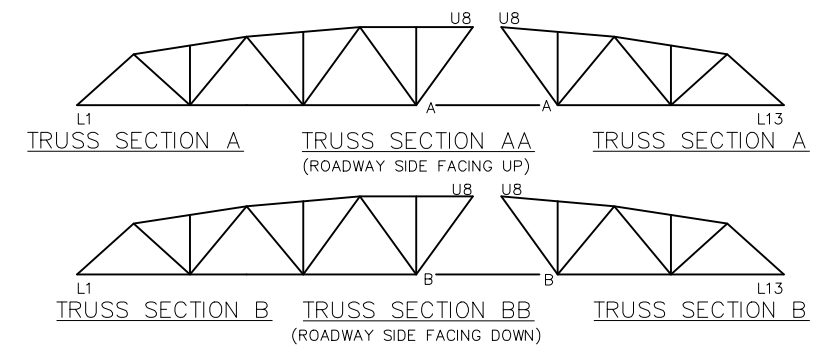
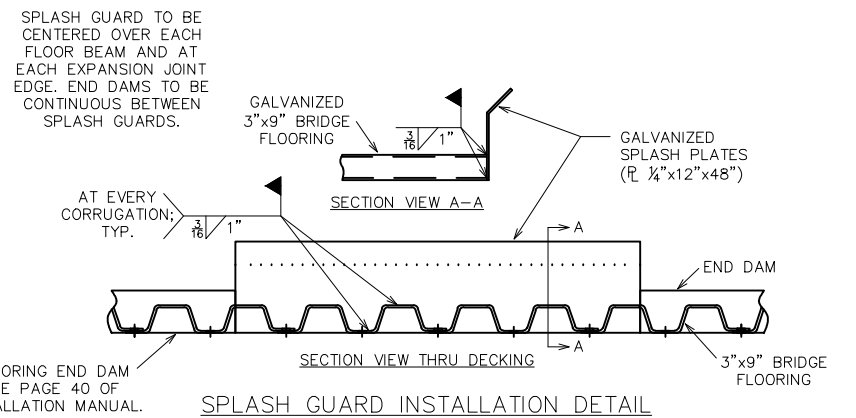
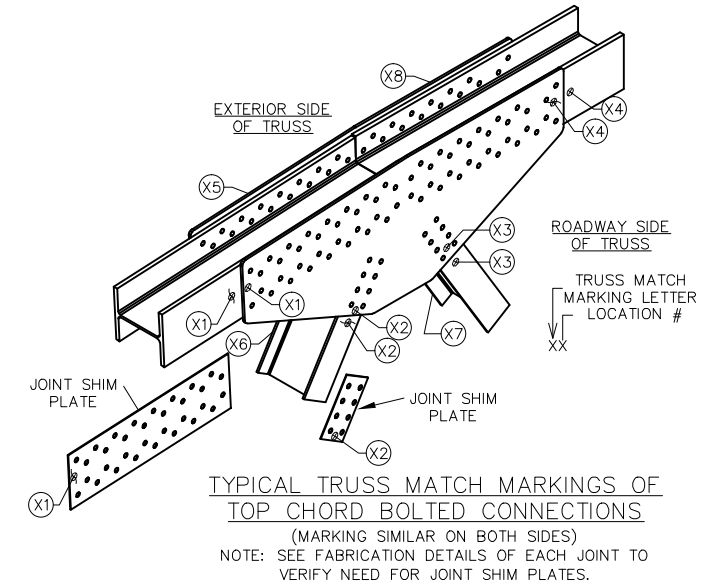
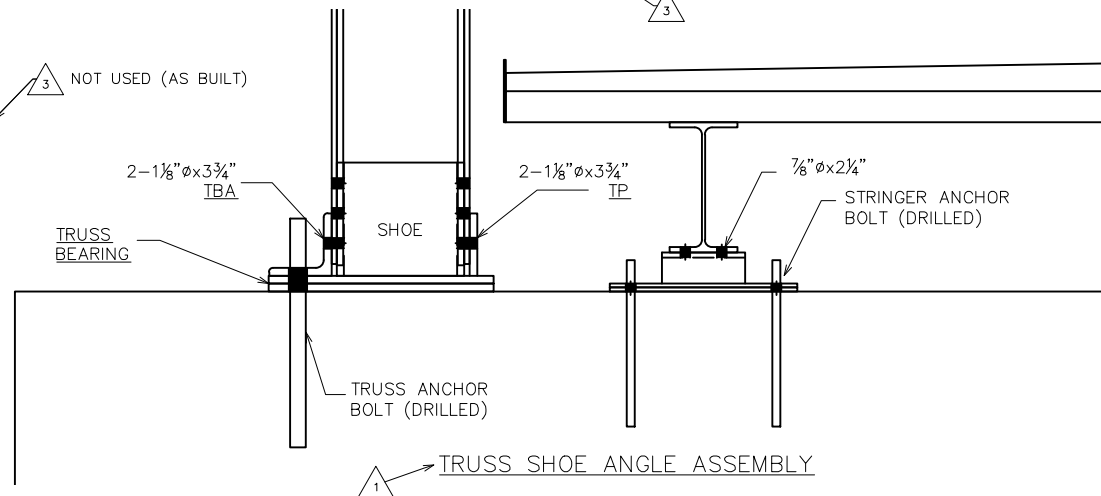
FIELD ASSEMBLY BOLT CHART		7/8" A325 TYPE 1 GALV.			
LOCATION		BOLT LENGTH			
		2 1/4"	1 1/2"	3/4"	3"
VERTICAL TO FLB EP					140
LRP1 TO LRAA1					8
STRINGER TO STRINGER BEARING	24				
SHELF ANGLE TO STRINGERS	24			48	
L7, L9 TO D6, D7				48	
TOTAL REQ'D	48	0	48	148	



FIELD ASSEMBLY BOLT CHART		3/4" A307 DOME HEAD BOLTS			
LOCATION		BOLT LENGTH			
		6"			
RAILS TO DIAGONALS		96			
TOTAL REQ'D		96			



FIELD ASSEMBLY BOLT CHART		3/4" A325 TYPE 1 GALV.			
LOCATION		BOLT LENGTH			
		2 1/2"			
STRINGER SEAT TO STRINGER		120			
TOTAL REQ'D		120			

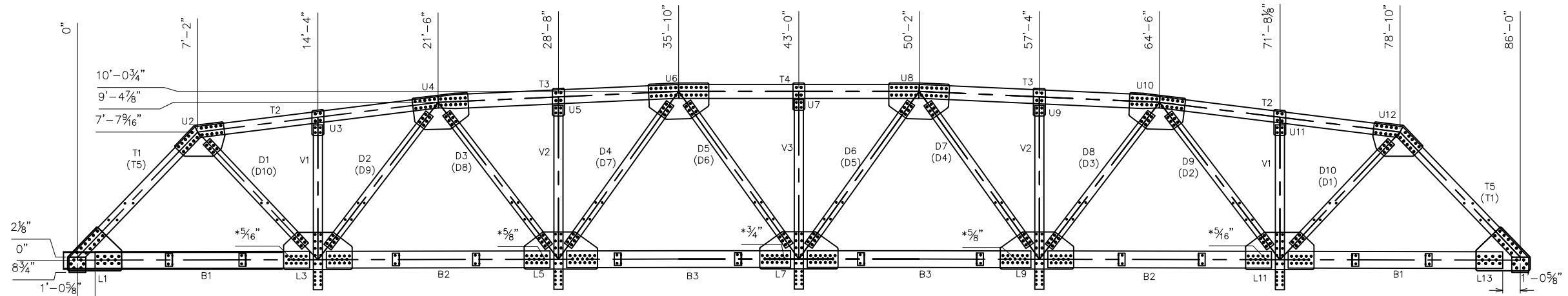


**REVISED**  
SEE REVISION TABLE  
10-12-09

**TRUSS MATCH MARKINGS**  
NOTE- MATCH MARK LETTERS STAMPED ON BOTTOM CHORD CHANNELS & GUSSET PLATES AT CONNECTIONS WITH 1/2" LETTER STAMPS.

NOTE: DRAWINGS RELATIVE DO NOT SCALE

CURRENT REVISION- 10-12-09		CURRENT SUBMITTAL- 07-09-09	
FABRICATOR U.S. BRIDGE & METAL WORK INC 118		OTT-LEMON ROAD	
LEMON ROAD GALVANIZED TRUSS OTTAWA COUNTY, OH			SHEET NO. 4
DESIGN: AG	DRAW: JDH	REVIEW: SAF	CHECK: DLM
JOB# 41774			TOTAL 14
FIELD ASSEMBLY			



LAYOUT DESIGN BASED ON: GALVANIZED  
 1" CLEARANCE AT VERTICAL & DIAGONALS TO TOP CHORD  
 1" CLEARANCE AT DIAGONAL TO BOTTOM CHORD  
 1" CLEARANCE AT DIAGONAL TO VERTICAL  
 1" CLEARANCE AT BOTTOM CHORD TO VERTICAL  
 \* DENOTES CAMBER AT PANEL POINTS  
 3/4" CAMBER RUNS FROM L1 TO L7  
 (TRUSS BB IN PARENTHESIS)

NOTE:  
 VERTICALS & DIAGONALS=W12x30  
 SHOE=W12x72  
 T1,T2=W12x50  
 T3,T4=W12x58  
 BOTTOM CHORD 2-C12x30

SHOP ASSEMBLY BOLT CHART	1 1/8" A325 TYPE 1 GALVANIZED			
	BOLT LENGTH			
LOCATION	2 3/4"	3"		
L1 TO T1,T5		88		
L1, L13 TO B1	88			
L1 TO SHOE		32		
U2,U12 TO T1,T5		80		
U2,U12 TO T2		80		
U2,U12 TO D1,D10	48			
U3,U11 TO T2		32		
U4,U10 TO T2		80		
U4,U10 TO T3		96		
U4,U10 TO D2,D9	48			
U4,U10 TO D8	48			
U5,U9 TO T3		32		
U7 TO T4		16		
L3,L11 TO D1,D2,D10,D9	96			
L5,L9 TO D3,D4,D7,D8	96			
L7	44			
L7 TO D5,D6	48			
U6 TO T3		48		
U6 TO T4		48		
U6 TO D4,D5	48			
TOTAL REQ'D	564	632		

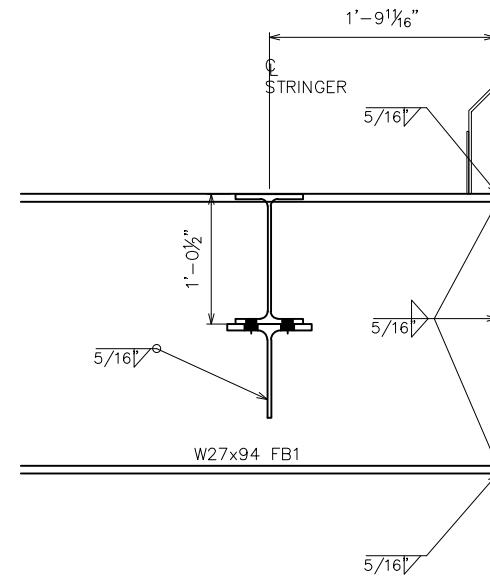
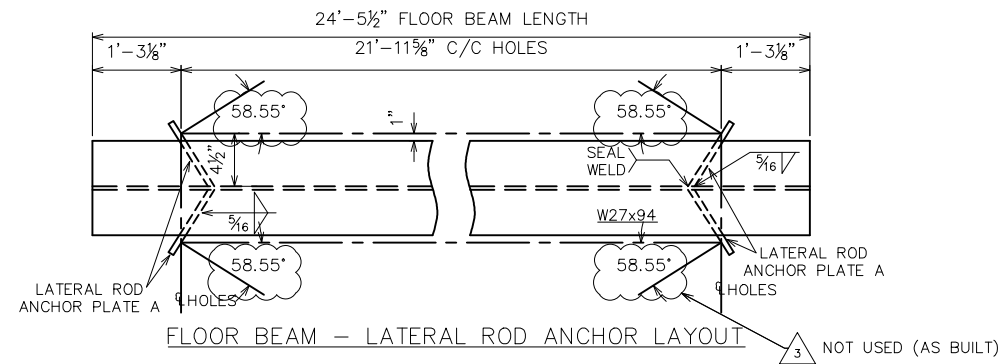
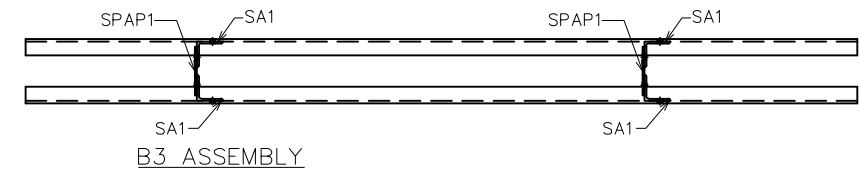
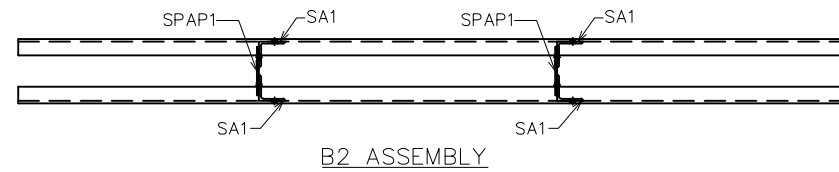
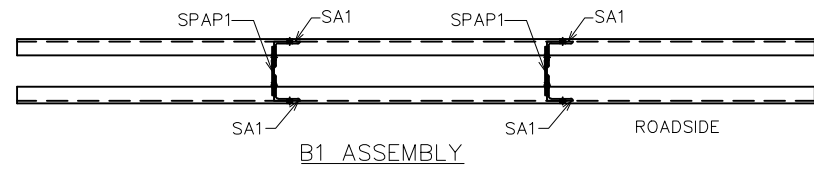
SHOP ASSEMBLY BOLT CHART	7/8" A325 TYPE 1 GALVANIZED			
	BOLT LENGTH			
LOCATION	2 1/4"			
U3,U11 TO V1	32			
U5,U9 TO V2	32			
U7 TO V3	16			
SA1 TO BOTTOM CHORD	96			
SA1 TO SPAP	96			
V1 TO L3,L11	56			
V2 TO L5,L9	56			
V3 TO L7	28			
TOTAL REQ'D	412			

SHOP ASSEMBLY BOLT CHART	1" A325 TYPE 1 GALVANIZED			
	BOLT LENGTH			
LOCATION	2 1/2"			
L3,L11 TO B1,B2	224			
L5,L9 TO B2,B3	180			
L7 TO B3	68			
TOTAL REQ'D	472			

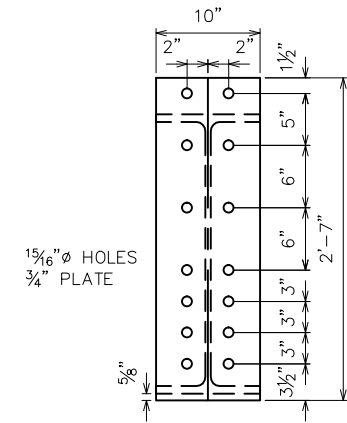
**REVISED**  
 SEE REVISION TABLE  
 10-12-09

CURRENT REVISION- 10-12-09	CURRENT SUBMITTAL- 07-09-09
FABRICATOR 	OTT-LEMON ROAD
LEMON ROAD GALVANIZED TRUSS OTTAWA COUNTY, OH	SHEET NO. <b>5</b>
DESIGN: AG   DRAW: JDH   REVIEW: SAF   CHECK: DLM   JOB# 41774	TOTAL 14
SHOP ASSEMBLY	

NOTE: DRAWINGS RELATIVE DO NOT SCALE



FLOOR BEAM END PLATE DETAIL



**REVISED**  
SEE REVISION TABLE  
10-12-09

NOTE: DRAWINGS RELATIVE DO NOT SCALE

CURRENT REVISION- 10-12-09		CURRENT SUBMITTAL- 07-09-09	
FABRICATOR U.S. BRIDGE & METAL WORK INC 118		OTT-LEMON ROAD	
LEMON ROAD GALVANIZED TRUSS OTTAWA COUNTY, OH			SHEET NO. <b>6</b>
DESIGN: AG	DRAW: JDH	REVIEW: SAF	CHECK: DLM
JOB# 41774			TOTAL 14
SHOP ASSEMBLY			

DATE PLOTTED October 12, 2009

S:\JOBS\OHIO\OTTAWA\41774-Ottawa Co.-Lemon Rd.-Galv.Truss 86'x24'Drawings\Revisions\1258-ASBULLT.dwg

MATERIAL SCHEDULE

PC QTY.	PN	DESCRIPTION	MATERIAL	FINISH	WEIGHT	
1	ASSY	A	TRUSS SECTION A LONG	A572	GALV	10393#
1	ASSY	A	TRUSS SECTION A SHORT	A572	GALV	7058#
1	ASSY	AA	TRUSS SECTION AA	A572	GALV	17450#
1	ASSY	B	TRUSS SECTION B LONG	A572	GALV	10393#
1	ASSY	B	TRUSS SECTION B SHORT	A572	GALV	7058#
1	ASSY	BB	TRUSS SECTION BB	A572	GALV	17450#
2	PCS	T1	TOP CHORD 1 W12x50 @ 10'-9 7/16"	A572	GALV	539#
4	PCS	T2	TOP CHORD 2 W12x50 @ 14'-7 1/16"	A572	GALV	729#
4	PCS	T3	TOP CHORD 3 W12x58 @ 14'-4 3/16"	A572	GALV	832#
2	PCS	T4	TOP CHORD 4 W12x58 @ 14'-4 7/16"	A572	GALV	833#
2	PCS	T5	TOP CHORD 5 W12x50 @ 10'-9 7/16"	A572	GALV	539#
4	PCS	SHOE	TRUSS SHOE W12x72 @ 10 7/8"	A572	GALV	65#
4	PCS	B1C	BOTTOM CHORD 1 CREEK SIDE C12x30 @ 12'-9 3/8"	A572	GALV	383#
4	PCS	B1R	BOTTOM CHORD 1 ROAD SIDE C12x30 @ 12'-9 3/8"	A572	GALV	383#
4	PCS	B2C	BOTTOM CHORD 2 CREEK SIDE C12x30 @ 13'-4"	A572	GALV	400#
4	PCS	B2R	BOTTOM CHORD 2 ROAD SIDE C12x30 @ 13'-4"	A572	GALV	400#
4	ASSY	B3C	BOTTOM CHORD 3 CREEK SIDE C12x30 @ 13'-4"	A572	GALV	400#
4	ASSY	B3R	BOTTOM CHORD 3 ROAD SIDE C12x30 @ 13'-4"	A572	GALV	400#
4	PCS	V1	VERTICAL 1 W12x30 @ 9'-9 15/16"	A572	GALV	295#
4	PCS	V2	VERTICAL 2 W12x30 @ 10'-11 9/16"	A572	GALV	329#
2	PCS	V3	VERTICAL 3 W12x30 @ 11'-3 1/2"	A572	GALV	339#
2	PCS	D1	DIAGONAL 1 W12x30 @ 8'-6 3/4"	A572	GALV	257#
2	PCS	D2	DIAGONAL 2 W12x30 @ 10'-0 1/16"	A572	GALV	300#
2	PCS	D3	DIAGONAL 3 W12x30 @ 10'-0 7/16"	A572	GALV	301#
2	PCS	D4	DIAGONAL 4 W12x30 @ 10'-5 3/8"	A572	GALV	313#
2	PCS	D5	DIAGONAL 5 W12x30 @ 10'-5 3/4"	A572	GALV	314#
2	ASSY	D6	DIAGONAL 6 W12x30 @ 10'-5 3/4"	A572	GALV	314#
2	ASSY	D7	DIAGONAL 7 W12x30 @ 10'-5 3/8"	A572	GALV	313#
2	PCS	D8	DIAGONAL 8 W12x30 @ 10'-0 7/16"	A572	GALV	301#
2	PCS	D9	DIAGONAL 9 W12x30 @ 10'-0 1/16"	A572	GALV	300#
2	PCS	D10	DIAGONAL 10 W12x30 @ 8'-6 3/4"	A572	GALV	257#
5	ASSY	FB1	FLOOR BEAM W27x94 @ 24'-5 1/2"	A572	GALV	2299#
12	ASSY	STR1	STRINGER 1 W12x35 @ 14'-2 3/4"	A572	GALV	498#
24	ASSY	STR2	STRINGER 2 W12x35 @ 14'-1 1/2"	A572	GALV	494#
8	PCS	L1	L1,L13 GUSSET PLATE PL 1/2" x 3'-2 5/8" x 2'-7 3/16"	A572	GALV	171#
8	PCS	L3	L3,L11 GUSSET PLATE PL 1/2" x 4'-1" x 2'-0 1/2"	A572	GALV	170#
8	ASSY	L5	L5,L9 GUSSET PLATE PL 1/2" x 4'-4 1/2" x 2'-0 1/2"	A572	GALV	183#
4	ASSY	L7	L7 GUSSET PLATE PL 1/2" x 4'-8" x 2'-0 1/2"	A572	GALV	195#
8	ASSY	U2	U2,U12 GUSSET PLATE PL 1/2" x 2'-11 7/8" x 2'-0 1/2"	A572	GALV	125#
8	PCS	U4	U4,U10 GUSSET PLATE PL 1/2" x 3'-4 9/16" x 2'-2 7/16"	A572	GALV	152#
8	ASSY	U6	U6,U8 GUSSET PLATE PL 1/2" x 3'-7 5/16" x 2'-1 15/16"	A572	GALV	160#
8	PCS	U3	U3,U11 GUSSET PLATE PL 1/2" x 8 1/2" x 1'-6 1/2"	A572	GALV	22#
8	ASSY	U5	U5,U9 GUSSET PLATE PL 1/2" x 8 1/2" x 1'-7 13/16"	A572	GALV	24#
4	PCS	U7	U7 GUSSET PLATE PL 1/2" x 8 1/2" x 1'-7 1/2"	A572	GALV	24#
48	PCS	SA1	SA1 L5x5x3/8 @ 9"	A572	GALV	9#
24	PCS	SPAP	SPAP PL 3/8" x 9" x 9 3/8"	A572	GALV	9#
12	ASSY	SBB	STRINGER BEARING MC6x15.1 @ 8"	A572	GALV	10#
18	ASSY	SBF	STRINGER BEARING FIXED PL 3/8" x 1'-6" x 8"	A572	GALV	15#
6	ASSY	SBE	STRINGER BEARING EXP. PL 3/8" x 1'-6" x 8"	A572	GALV	15#
4	PCS	TBA	TBA L6x6x3/4 @ 1'-3 7/8"	A572	GALV	38#
4	ASSY	FIXED	BEARING PLATE PL 3/4" x 20" x 22"	A572	GALV	94#
2	ASSY	EXP.	BEARING PLATE PL 3/4" x 20" x 22"	A572	GALV	94#
2	ASSY	EXP.	BEARING PLATE PL 1/2" x 20" x 22"	A572	GALV	62#
2	ASSY	BRONZE	BEARING PLATE PL 1/4" x 20" x 22"	A572	GALV	31#
10	PCS	FBEP	FLOOR BEAM END PLATE PL 3/4" x 10" x 2'-7"	A572	GALV	66#
10	PCS	FBSP	FLOOR BEAM SPACER PLATE PL 1/2" x 8" x 1'-2 3/8"	A572	GALV	16#

NOTE: DRAWINGS RELATIVE DO NOT SCALE

30	ASSY	SSEAT	STRINGER SEAT (60 pcs) W12x50 @ 6"	A572	GALV	25#
4	ASSY	LRP12	LATERAL ROD PLATE PL 1/2" x 8" x 9 3/8"	A572	GALV	11#
4	ASSY	LRAA1	LATERAL ROD ANGLE L8x4x1/2 @ 9"	A572	GALV	15#
20	PCS	LRAPA	LATERAL ROD ANCHOR PLATE A PL 3/4" x 9 1/16" x 6"	A572	GALV	12#
12	ASSY	LR1	LATERAL ROD 1 1" Dia. Round Rod @ 20'-0"	A572	GALV	54#
4	ASSY	LR3	LATERAL ROD 3 1" Dia. Round Rod @ 6'-5"	A572	GALV	17#
8	ASSY	LR2	LATERAL ROD 2 1" Dia. Round Rod @ 5'-9"	A572	GALV	15#
4	ASSY	RAIL A	RAIL A HSS 8 x 4 x 1/2" @ 25'-6 5/8"	A500	GALV	900#
4	ASSY	RAIL B	RAIL B HSS 8 x 4 x 1/2" @ 25'-6 5/8"	A500	GALV	900#
4	ASSY	RAIL C	RAIL C HSS 8 x 4 x 1/2" @ 14'-3 9/16"	A500	GALV	504#
4	ASSY	RAIL D	RAIL D HSS 8 x 4 x 1/2" @ 14'-3 9/16"	A500	GALV	504#
2	ASSY	RAIL E	RAIL E HSS 8 x 4 x 1/2" @ 14'-3 3/4"	A500	GALV	504#
2	ASSY	RAIL F	RAIL F HSS 8 x 4 x 1/2" @ 14'-3 3/4"	A500	GALV	504#
32	ASSY	ST	SPLICE TUBE PL 1/2" x 1 1/4" x 1'-8"	A500	GALV	4#
32	ASSY	ST	SPLICE TUBE PL 1/2" x 5 3/4" x 1'-8"	A500	GALV	16#
4	PCS	GCP	CONNECTION PLATE PL 1/2" x 12" x 1'-10"	A572	GALV	37#
4	PCS	GCP	CONNECTION PLATE PL 1/2" x 4" x 12"	A572	GALV	7#
4	PCS	GCP	CONNECTION PLATE PL 1/2" x 3 1/2" x 1'-10 7/16"	A572	GALV	11#
4	PCS	SP	SPACER PLATE PL 3/8" x 10" x 14"	A572	GALV	15#
4	ASSY	POST C	POST C W6x25 @ 6'-0"	A572	GALV	150#
2	ASSY	S ANGLE	SHELF ANGLE L5x3-1/2x3/8 @ 24'	A572	GALV	250#
4	ASSY	A ANGLE	ABUTMENT ANGLE L4x4x3/8 @ 12'	A572	GALV	118#
6	ASSY	UBOLT		A307	GALV	
612	PCS	BOLT	1 1/8"x2 3/4" B,N,W	A325	GALV	#N/A
728	PCS	BOLT	1 1/8"x3" B,N,W	A325	GALV	#N/A
16	PCS	BOLT	1 1/8"x3 3/4" B,N,W	A325	GALV	#N/A
460	PCS	BOLT	7/8"x2 1/4" B,N,W	A325	GALV	#N/A
48	PCS	BOLT	7/8"x2 3/4" B,N,W	A325	GALV	#N/A
148	PCS	BOLT	7/8"x3" B,N,W	A325	GALV	#N/A
96	PCS	BOLT	3/4"x6" B,N,W	A307	GALV	#N/A
10	PCS	SG	SPLASH GUARD PL 1/4" x 12" x 48"	A572	GALV	41#
4	ASSY	TP	TRUSS PLATE PL 3/4" x 6" x 1'-5 1/2"	A572	GALV	22#
4	ASSY	BWP	BACKWALL PLATE PL 1/2" x 3'-0" x 27"	A572	GALV	138#
608	ASSY	BOLT	1"x2 1/2" B,N,W			#N/A
8	ASSY	BOLT	TRUSS ANCHOR BOLT 1 1/2"x22" W/2 NUTS & PLATE WASHER	A449	GALV	
24	ASSY	BOLT	STRINGER ANCHOR BOLT 3/4"x16" W/2 NUTS & PLATE WASHER	A449	GALV	
64	ASSY	BOLT	5/8"x2 1/4" B,N,W			#N/A
120	ASSY	BOLT	3/4"x2 1/2" B,N,W	A325	GALV	#N/A

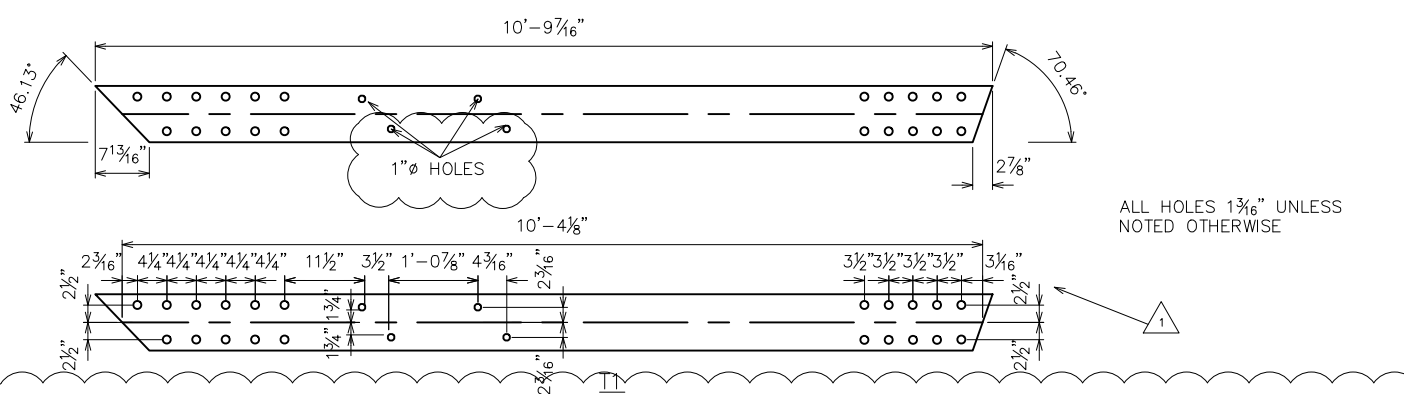
3

1

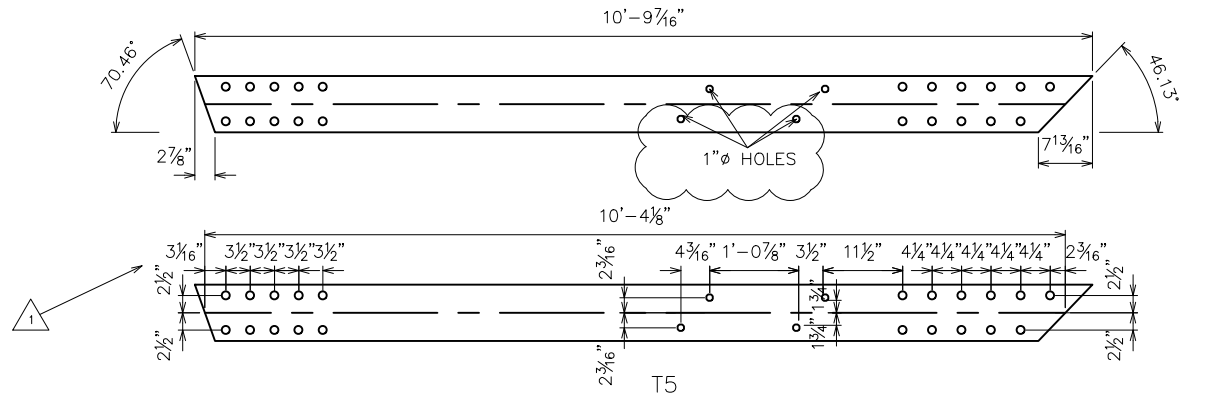
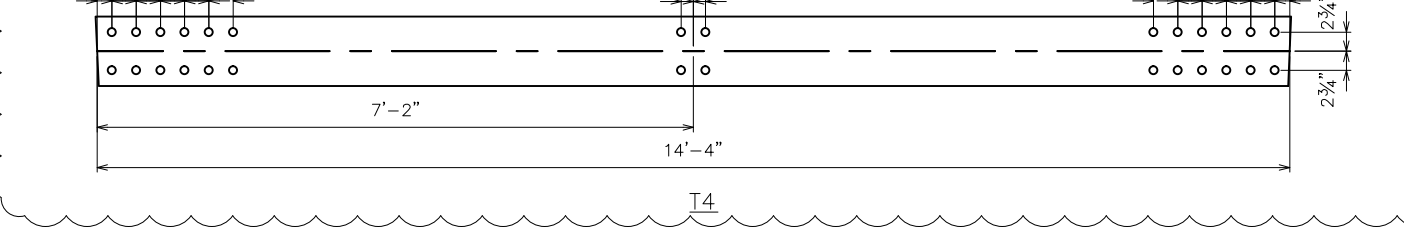
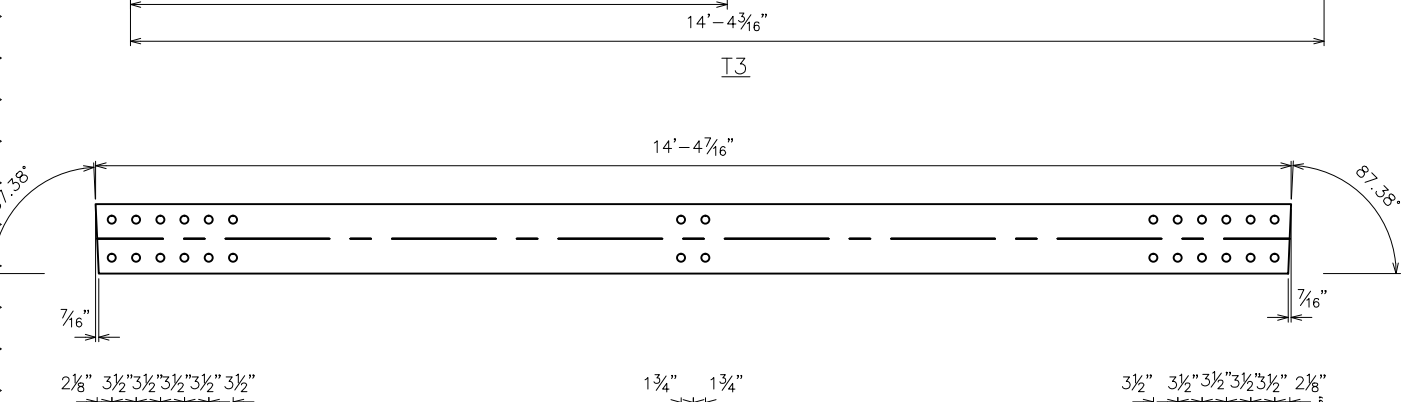
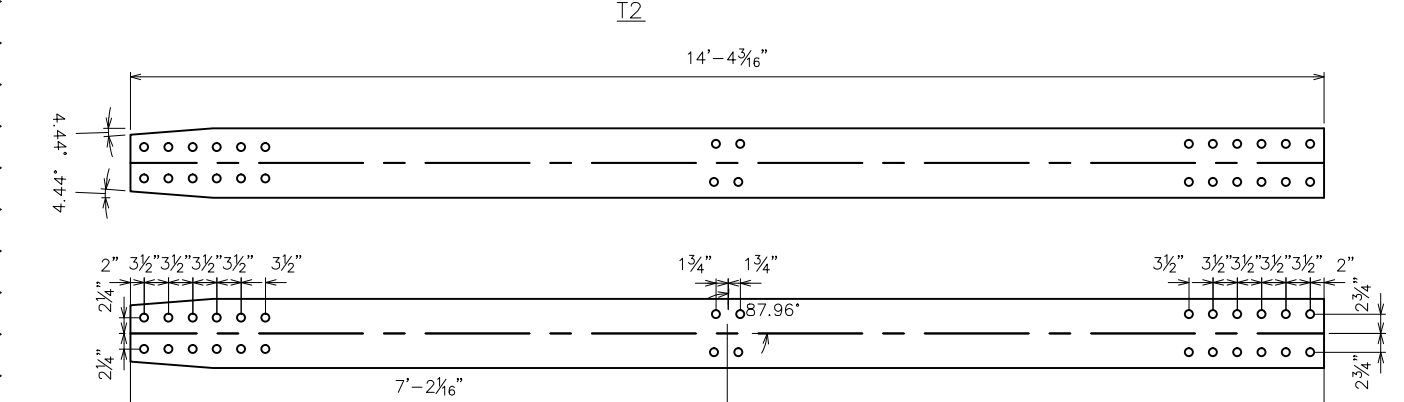
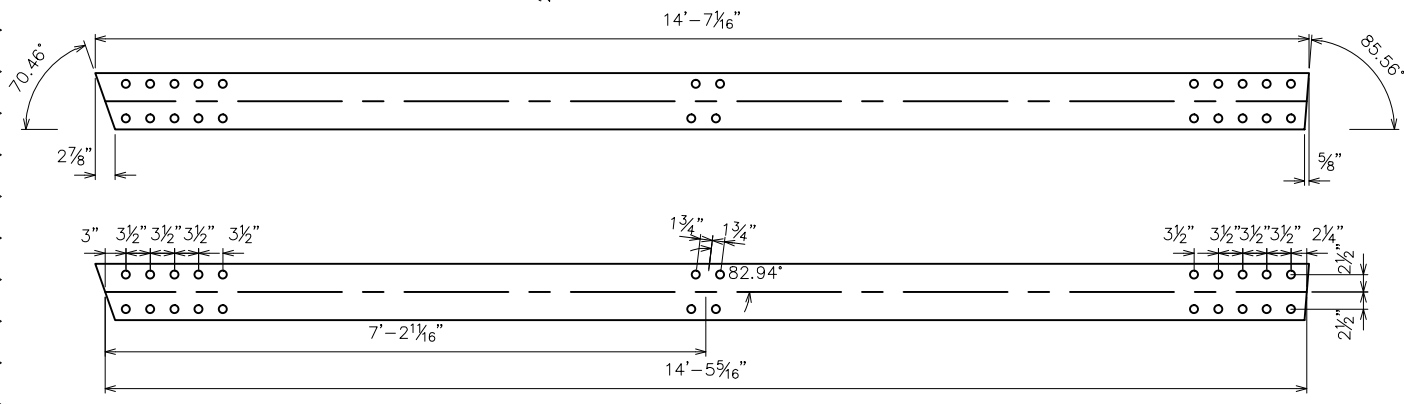
2

**REVISED**  
SEE REVISION TABLE  
10-12-09

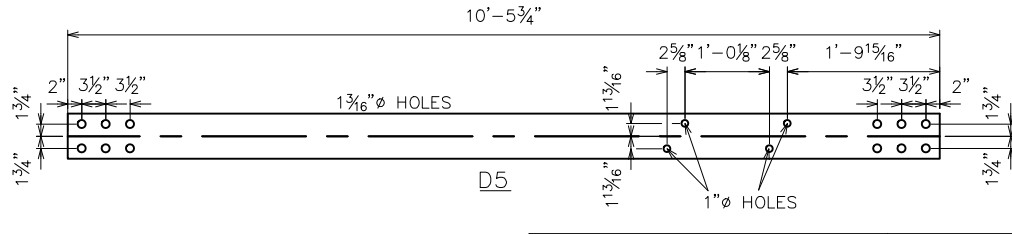
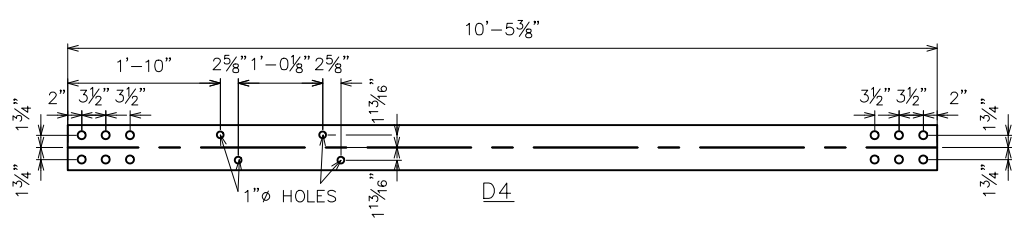
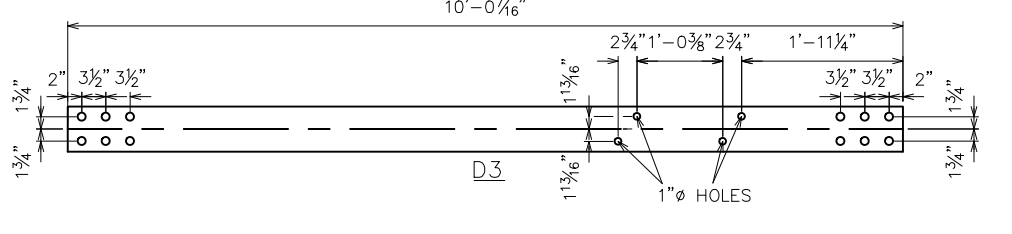
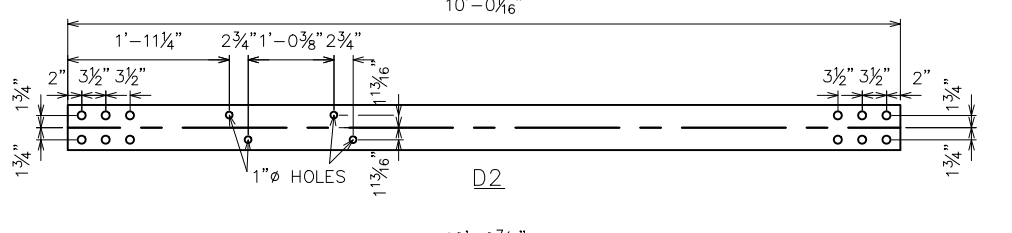
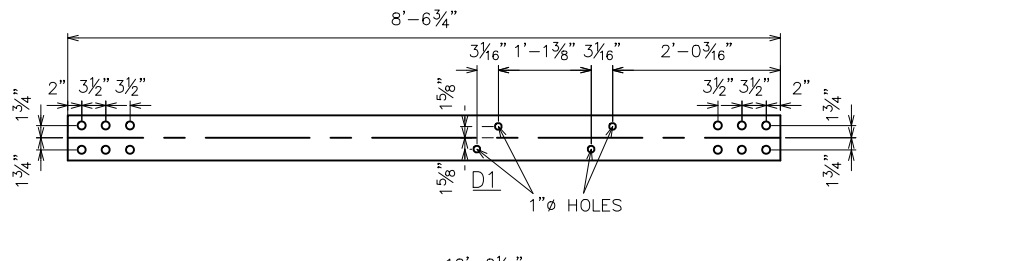
CURRENT REVISION- 10-12-09		CURRENT SUBMITTAL- 07-09-09	
FABRICATOR U.S. BRIDGE & IRON WORK INC 118		OTT-LEMON ROAD	
LEMON ROAD GALVANIZED TRUSS OTTAWA COUNTY, OH			SHEET NO. 7
DESIGN: AG	DRAW: JDH	REVIEW: SAF	CHECK: DLM
JOB# 41774			TOTAL 14
BOM			



ALL HOLES 1 3/16" UNLESS NOTED OTHERWISE



ALL HOLES 1 3/16" UNLESS NOTED OTHERWISE

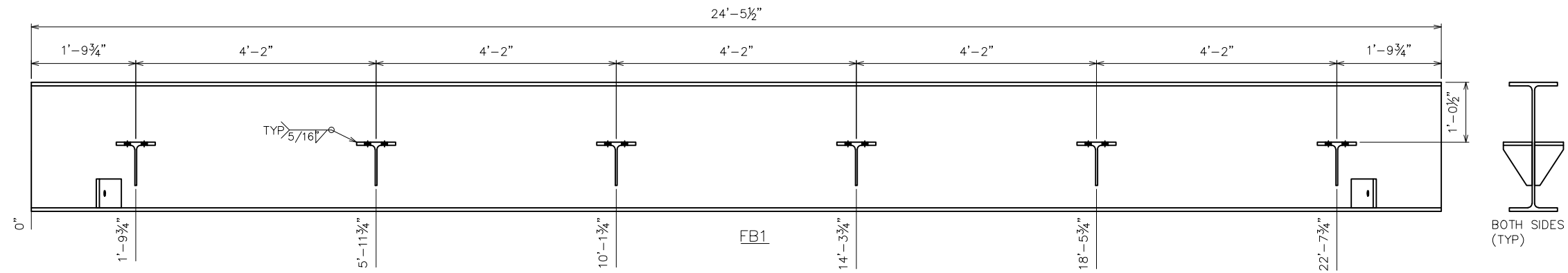


NOTE: DRAWINGS RELATIVE DO NOT SCALE

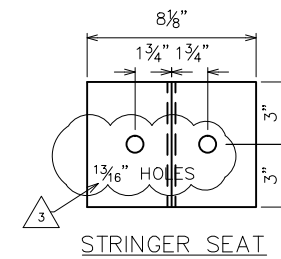
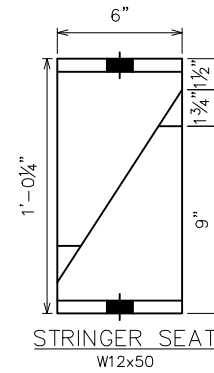
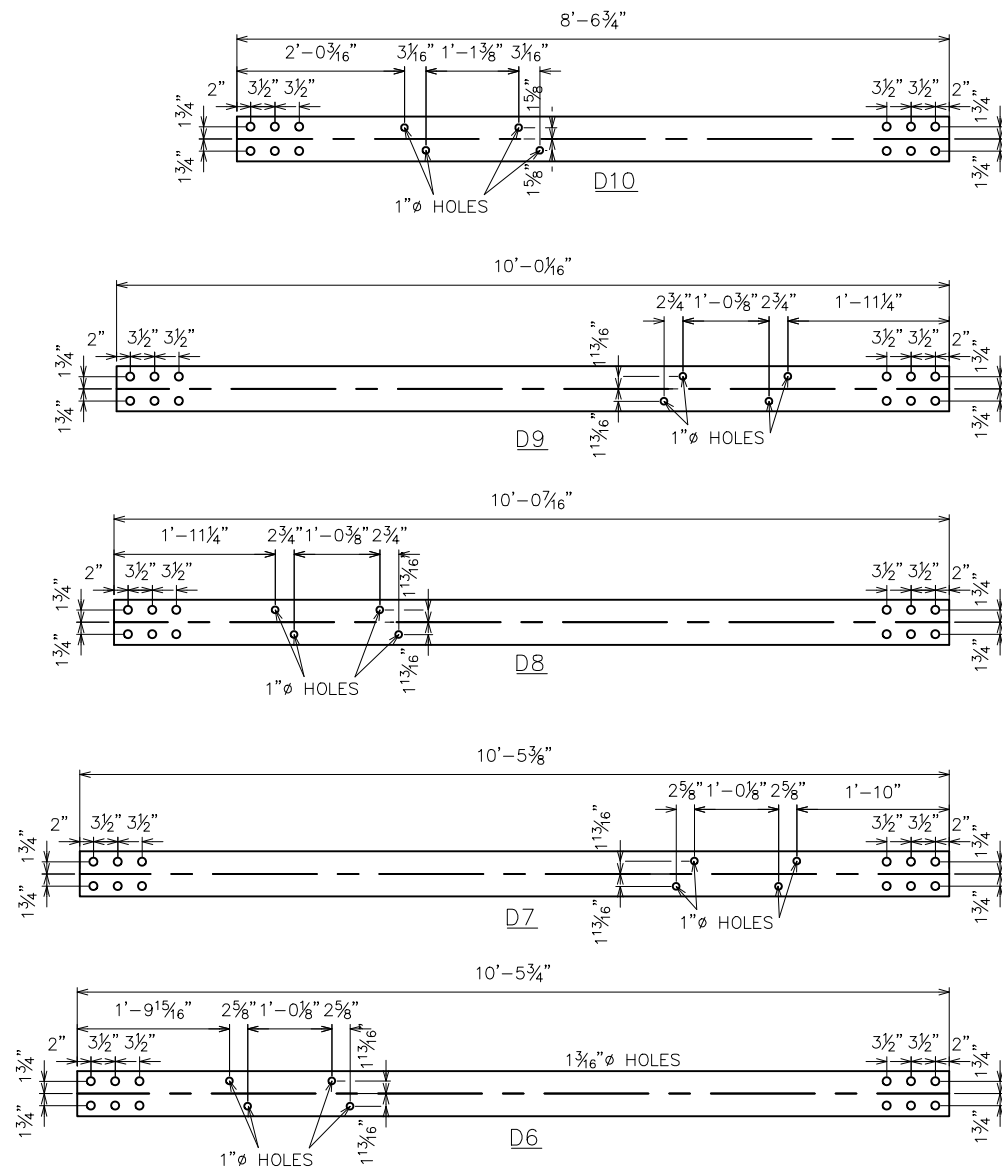
REVISED  
SEE REVISION TABLE  
10-12-09

CURRENT REVISION- 10-12-09		CURRENT SUBMITTAL- 07-09-09	
FABRICATOR U.S. BRIDGE & STEEL ARCH BLDG. INC.		OTT-LEMON ROAD	
LEMON ROAD GALVANIZED TRUSS OTTAWA COUNTY, OH		SHEET NO. 8	
DESIGN: AG	DRAW: JDH	REVIEW: SAF	CHECK: DLM
JOB# 41774		TOTAL 14	
BEAM FAB			





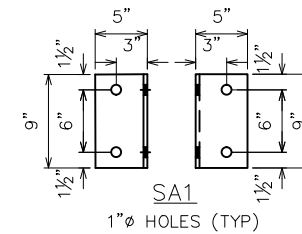
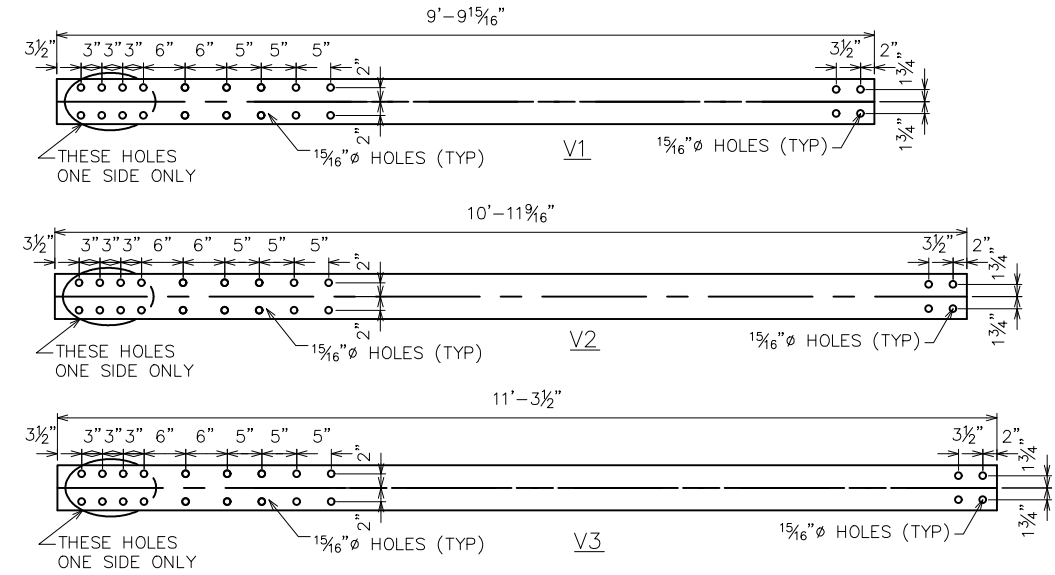
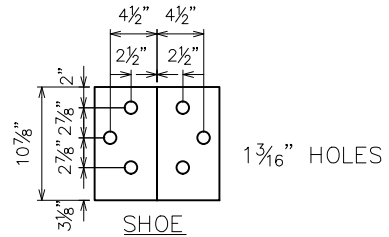
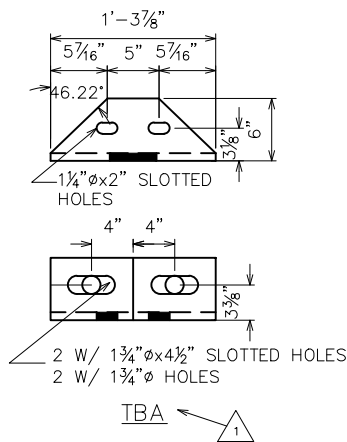
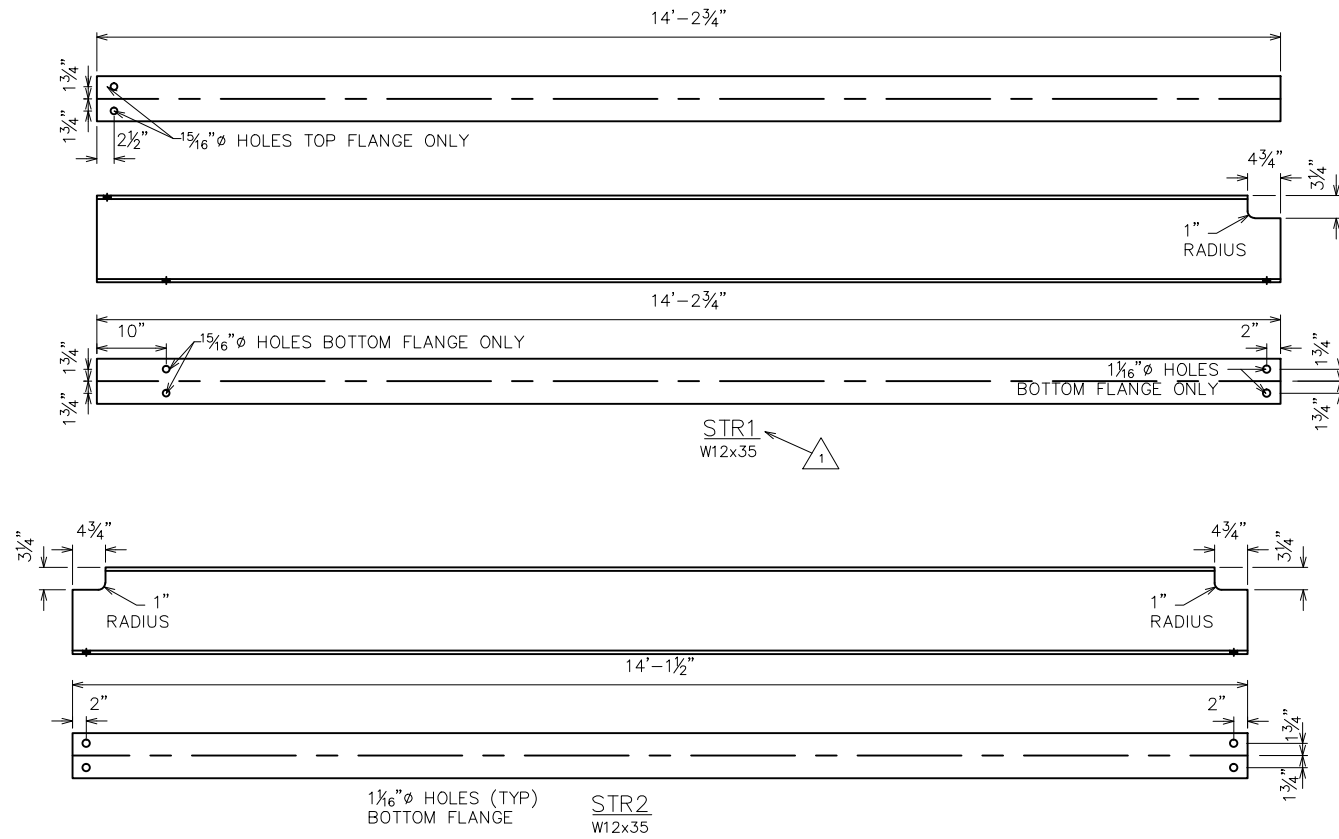
ALL HOLES 1 3/16" UNLESS NOTED OTHERWISE



**REVISED**  
SEE REVISION TABLE  
10-12-09

CURRENT REVISION- 10-12-09		CURRENT SUBMITTAL- 07-09-09	
FABRICATOR U.S. BRIDGE & METAL WORK INC 118		OTT-LEMON ROAD	
LEMON ROAD GALVANIZED TRUSS OTTAWA COUNTY, OH			SHEET NO. 9
DESIGN: AG	DRAW: JDH	REVIEW: SAF	CHECK: DLM
JOB# 41774			TOTAL 14
<b>BEAM FAB</b>			

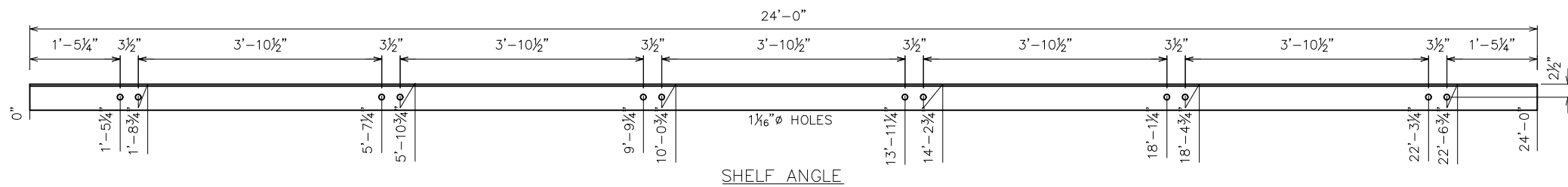
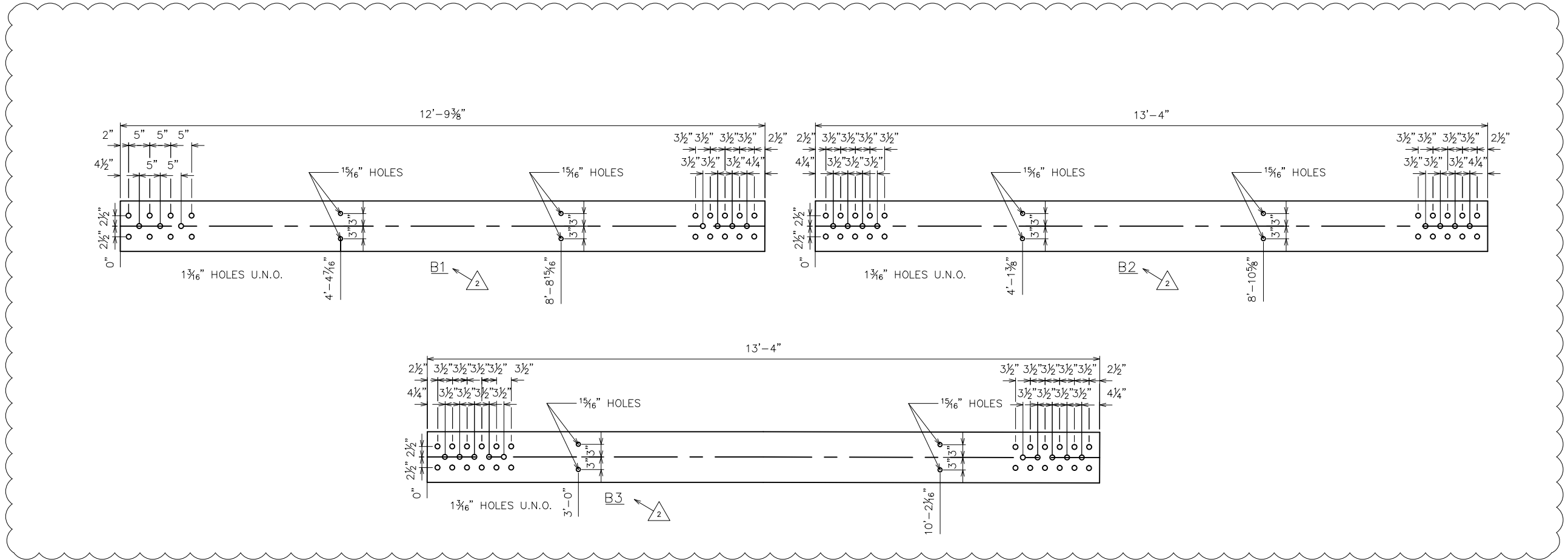
NOTE: DRAWINGS RELATIVE DO NOT SCALE



**REVISED**  
SEE REVISION TABLE  
10-12-09

CURRENT REVISION- 10-12-09		CURRENT SUBMITTAL- 07-09-09	
FABRICATOR U.S. BRIDGE & IRON WORK INC 119		OTT-LEMON ROAD	
LEMON ROAD GALVANIZED TRUSS OTTAWA COUNTY, OH			SHEET NO. <b>10</b>
DESIGN: AG	DRAW: JDH	REVIEW: SAF	CHECK: DLM
JOB# 41774			TOTAL 14
<b>BEAM FAB</b>			

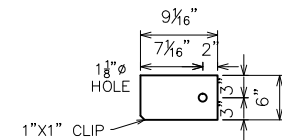
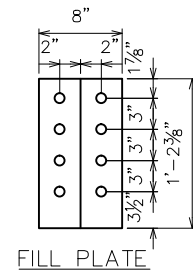
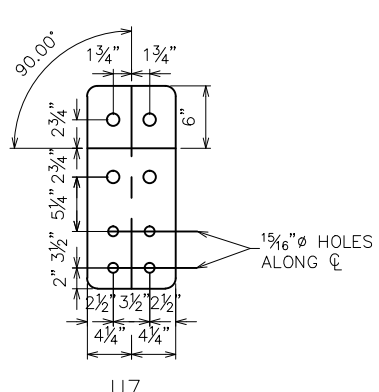
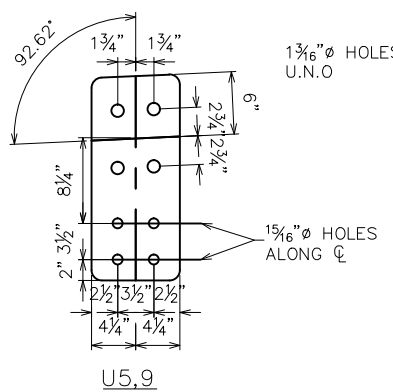
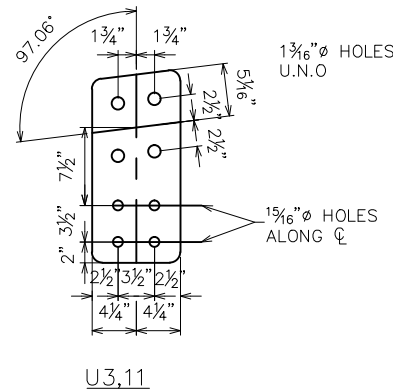
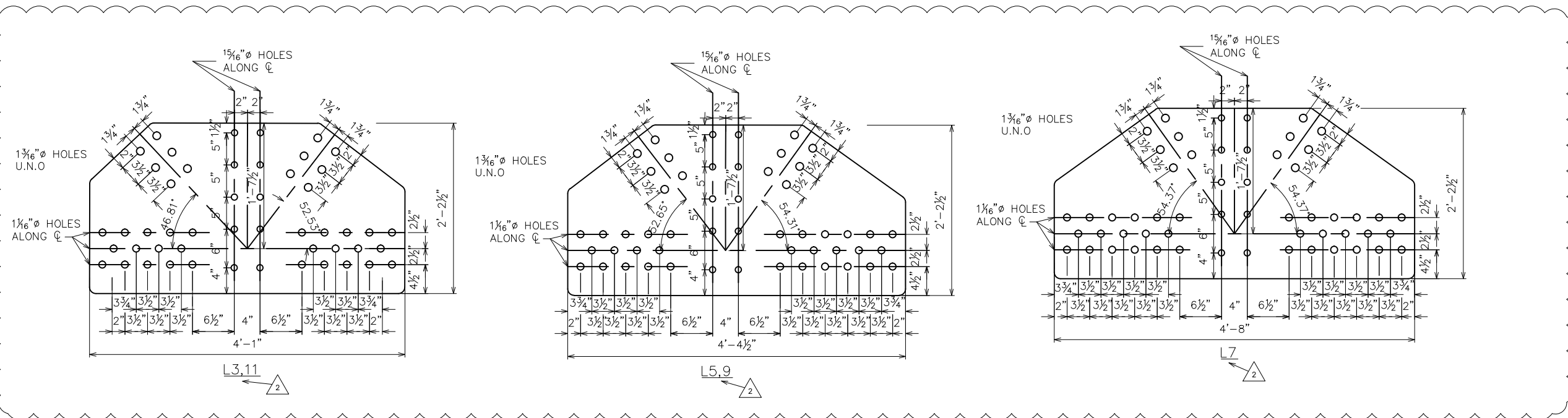
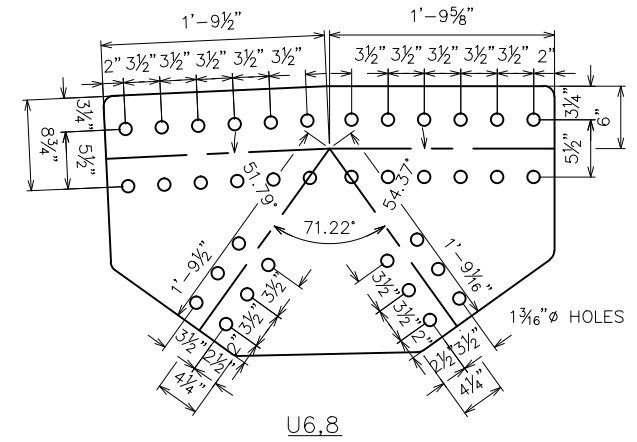
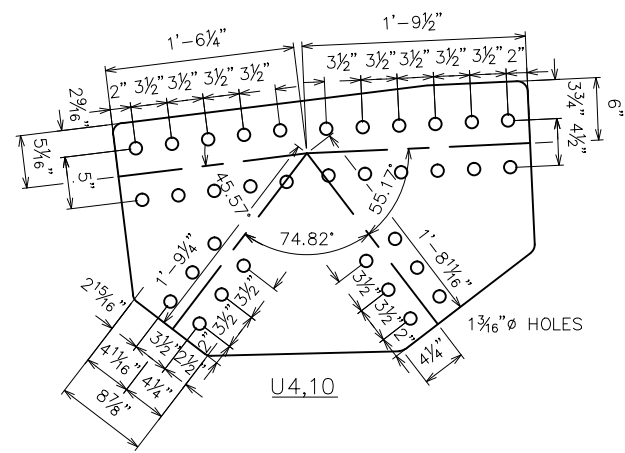
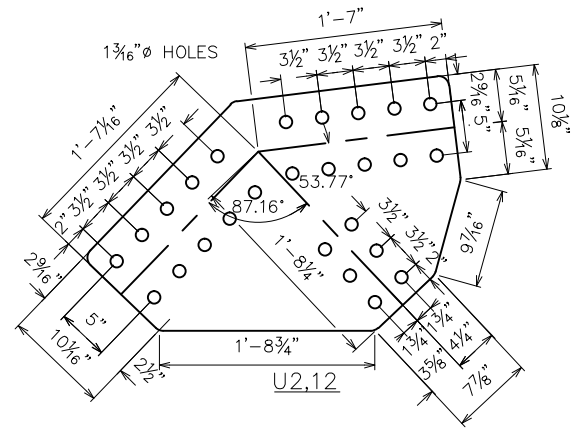
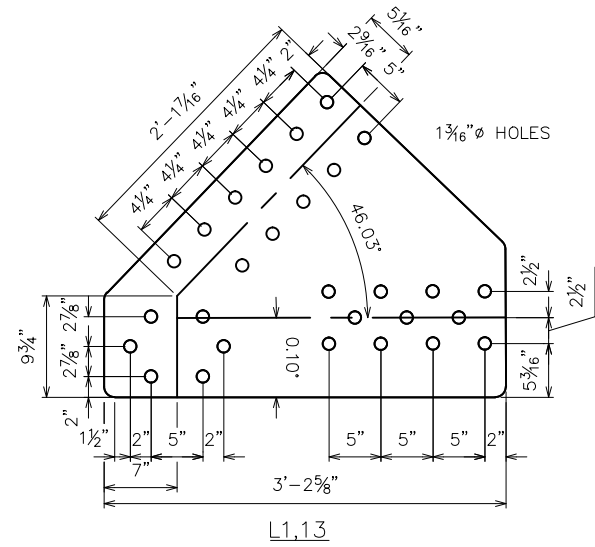
NOTE: DRAWINGS RELATIVE DO NOT SCALE



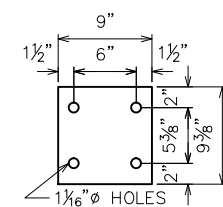
**REVISED**  
SEE REVISION TABLE  
10-12-09

NOTE: DRAWINGS RELATIVE DO NOT SCALE

CURRENT REVISION- 10-12-09		CURRENT SUBMITTAL- 07-09-09	
FABRICATOR U.S. BRIDGE & STEEL WORK INC 119		OTT-LEMON ROAD	
LEMON ROAD GALVANIZED TRUSS OTTAWA COUNTY, OH			SHEET NO. <b>11</b>
DESIGN: AG	DRAW: JDH	REVIEW: SAF	CHECK: DLM
JOB# 41774			TOTAL 14
<b>BEAM FAB</b>			



LATERAL ROD ANCHOR PLATE A  
NOTE: BEVEL AS REQ'D

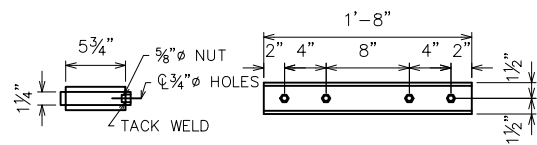
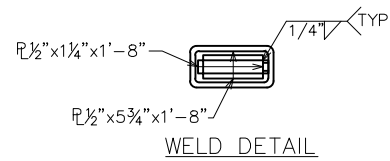
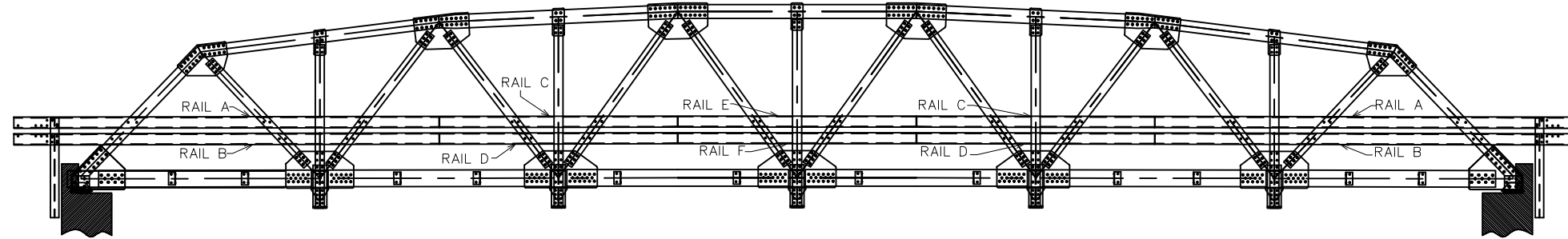


SPAP

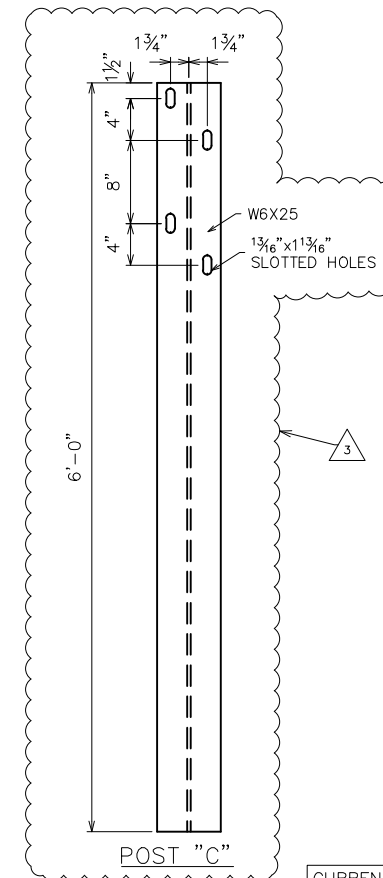
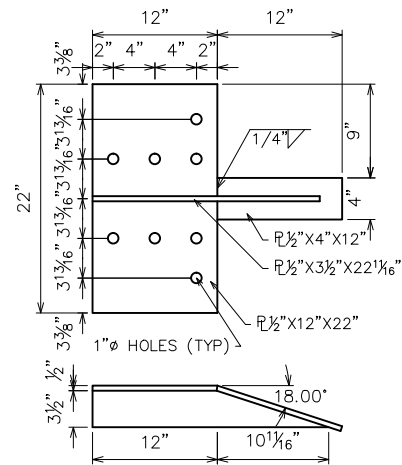
**REVISED**  
SEE REVISION TABLE  
10-12-09

NOTE: DRAWINGS RELATIVE DO NOT SCALE

CURRENT REVISION- 10-12-09		CURRENT SUBMITTAL- 07-09-09	
FABRICATOR U.S. BRIDGE & IRON WORK CO. INC.		OTT-LEMON ROAD	
LEMON ROAD GALVANIZED TRUSS OTTAWA COUNTY, OH		SHEET NO. 12	
DESIGN: AG	DRAW: JDH	REVIEW: SAF	CHECK: DLM
JOB# 41774		TOTAL 14	
FIELD ASSEMBLY			



2- $\phi 1/2$ "x $1\ 1/4$ "x1'-8"  
2- $\phi 1/2$ "x $5\ 3/4$ "x1'-8"



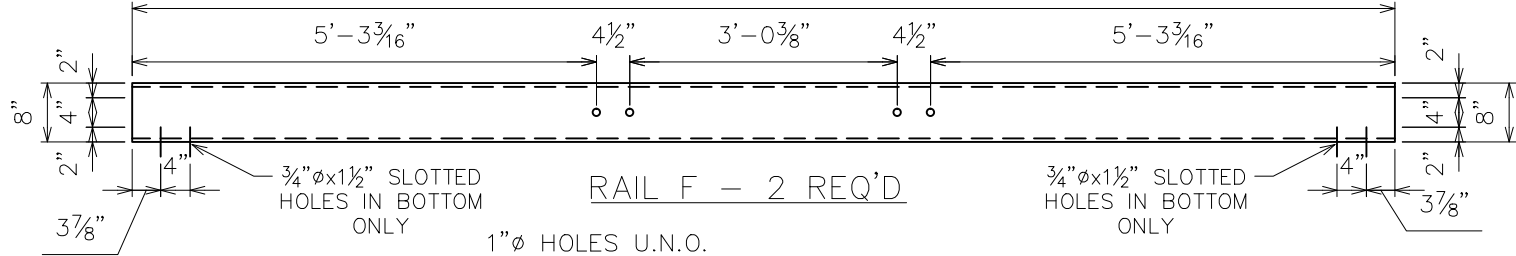
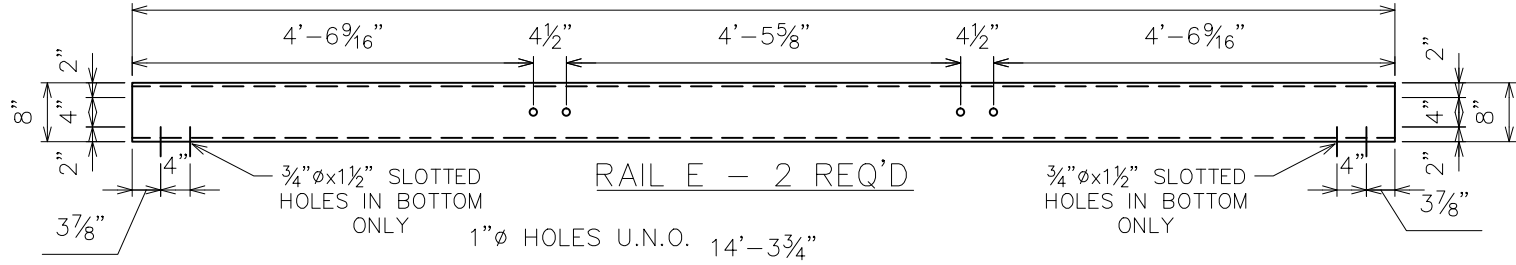
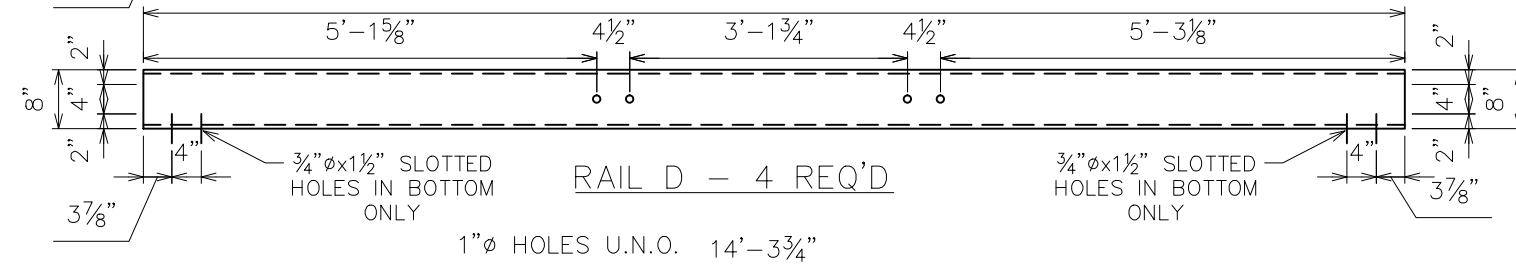
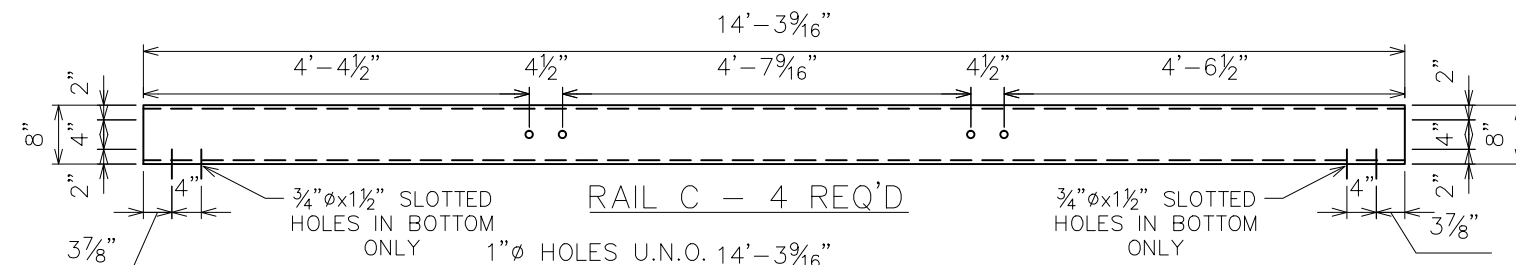
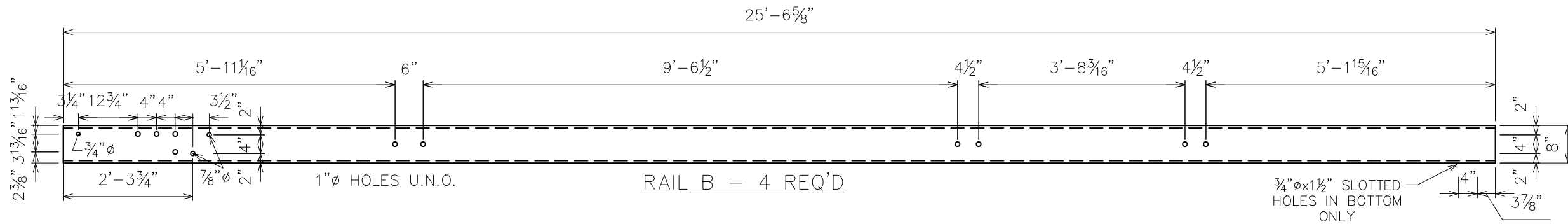
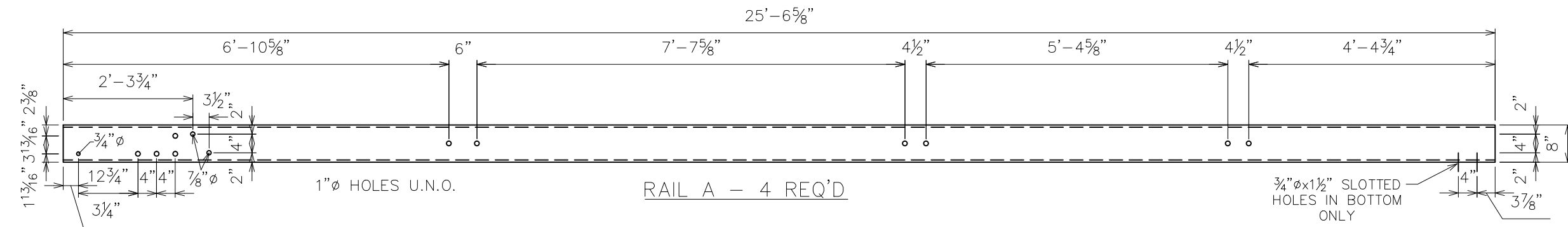
**REVISED**  
SEE REVISION TABLE  
10-12-09

NOTE: DRAWINGS RELATIVE DO NOT SCALE

CURRENT REVISION- 10-12-09		CURRENT SUBMITTAL- 07-09-09	
FABRICATOR U.S. BRIDGE & STEEL WORK INC 114		OTT-LEMON ROAD	
LEMON ROAD GALVANIZED TRUSS OTTAWA COUNTY, OH			SHEET NO. <b>13</b>
DESIGN: AG	DRAW: JDH	REVIEW: SAF	CHECK: DLM
JOB# 41774			TOTAL 14
RAILING			

DATE PLOTTED October 12, 2009

S:\JOBS\OHIO\OTTAWA\41774-Ottawa Co.-Lemon Rd.-Galv.Truss 86'x24'Drawings\Revisions\1258-ASBULT.dwg



NOTE: DRAWINGS RELATIVE DO NOT SCALE

REVISED  
SEE REVISION TABLE  
10-12-09

CURRENT REVISION- 10-12-09		CURRENT SUBMITTAL- 07-09-09	
FABRICATOR U.S. BRIDGE & IRON WORKS INC 118		OTT-LEMON ROAD	
LEMON ROAD GALVANIZED TRUSS OTTAWA COUNTY, OH			SHEET NO. 14
DESIGN: AG	DRAW: JDH	REVIEW: SAF	CHECK: DLM
JOB# 41774			TOTAL 14
RAILING			