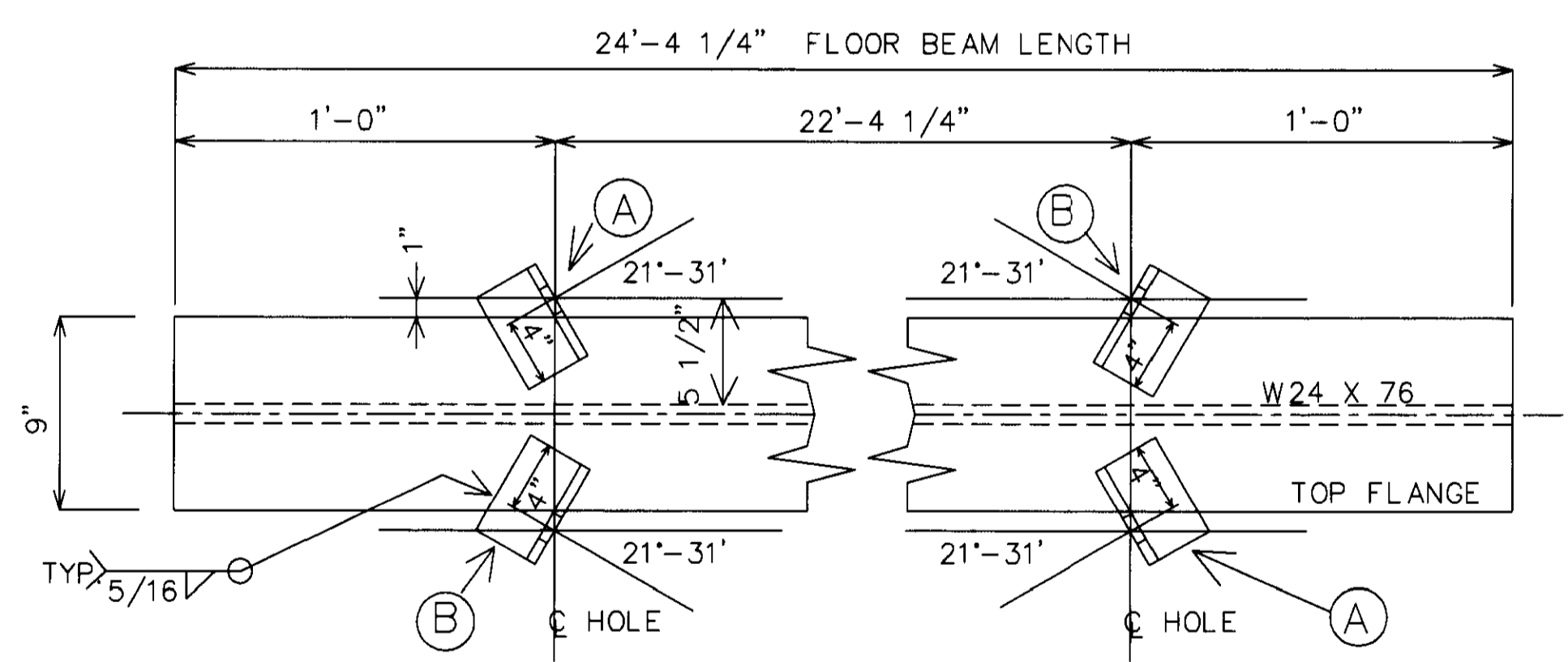
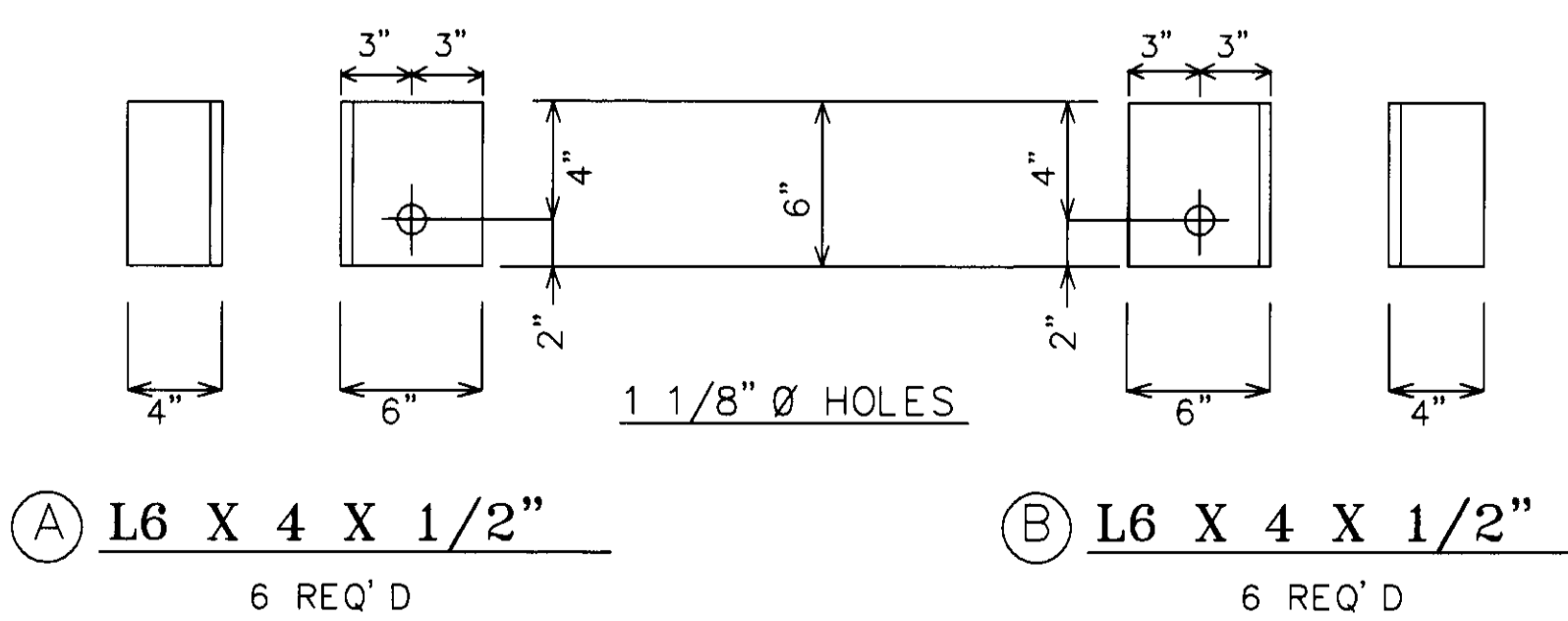


ANGLE CALC. = $\frac{8.8125}{22.354} = 0.394 = 21.52' = 21' 31'$

LENGTH CALC. = $\frac{22.354'}{\cos 21.52'} = 24.03'$



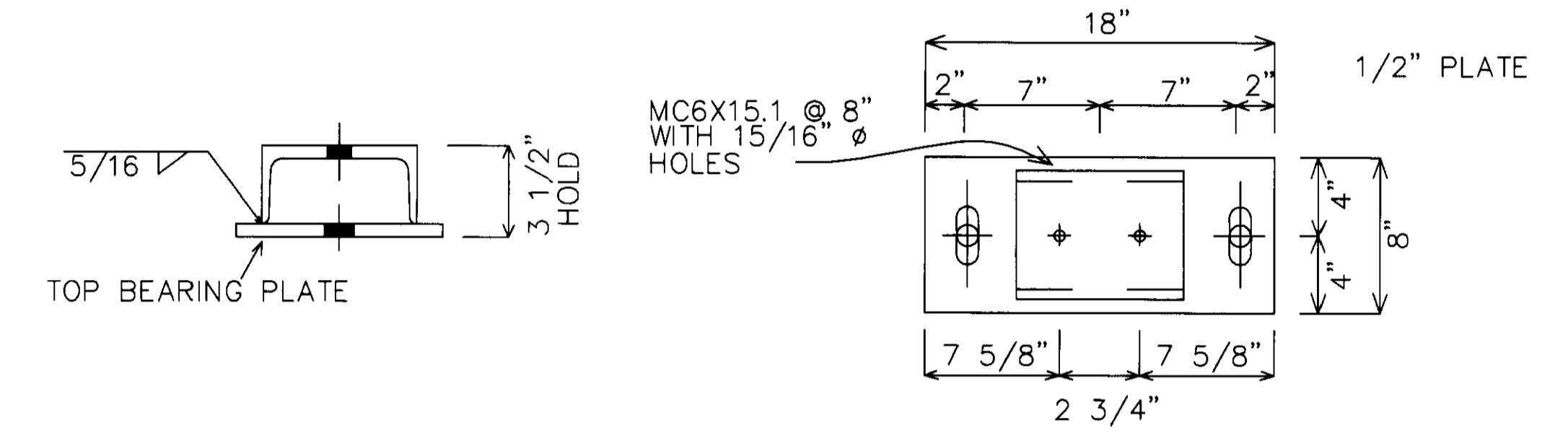
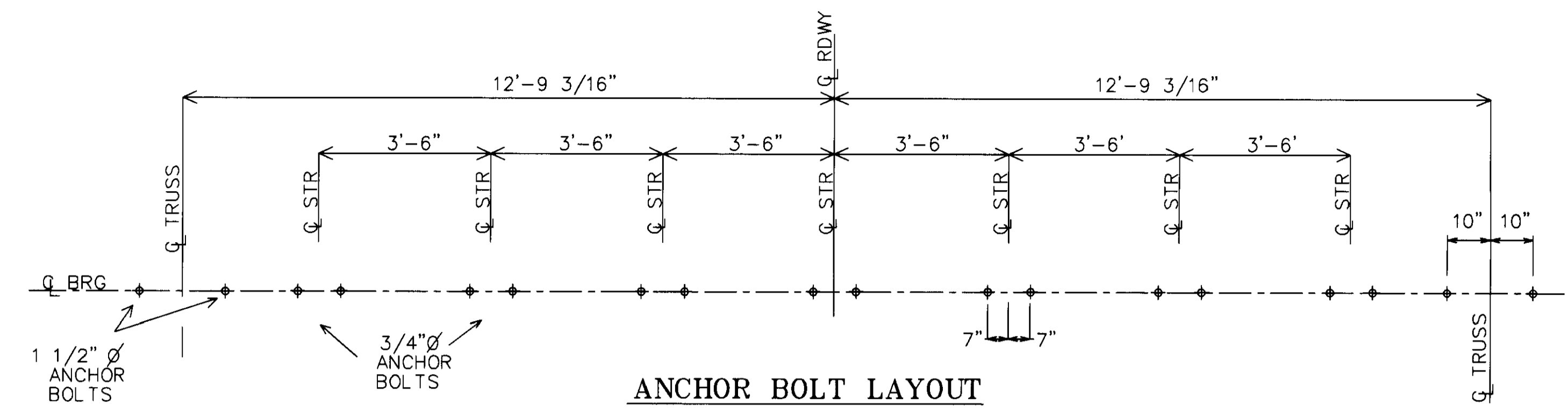
LATERAL ROD ANCHOR LAYOUT



LATERAL ROD LENGTHS

4 PCS INTERIOR PANEL LAT. RODS--1" Ø X 24'-6" WITH 6" THREAD ON EACH END
 4 PCS EXTERIOR PANEL LAT. RODS--1" Ø X 25'-0" WITH 6" THREAD ON EACH END

NOTE: DRAWINGS RELATIVE DO NOT SCALE



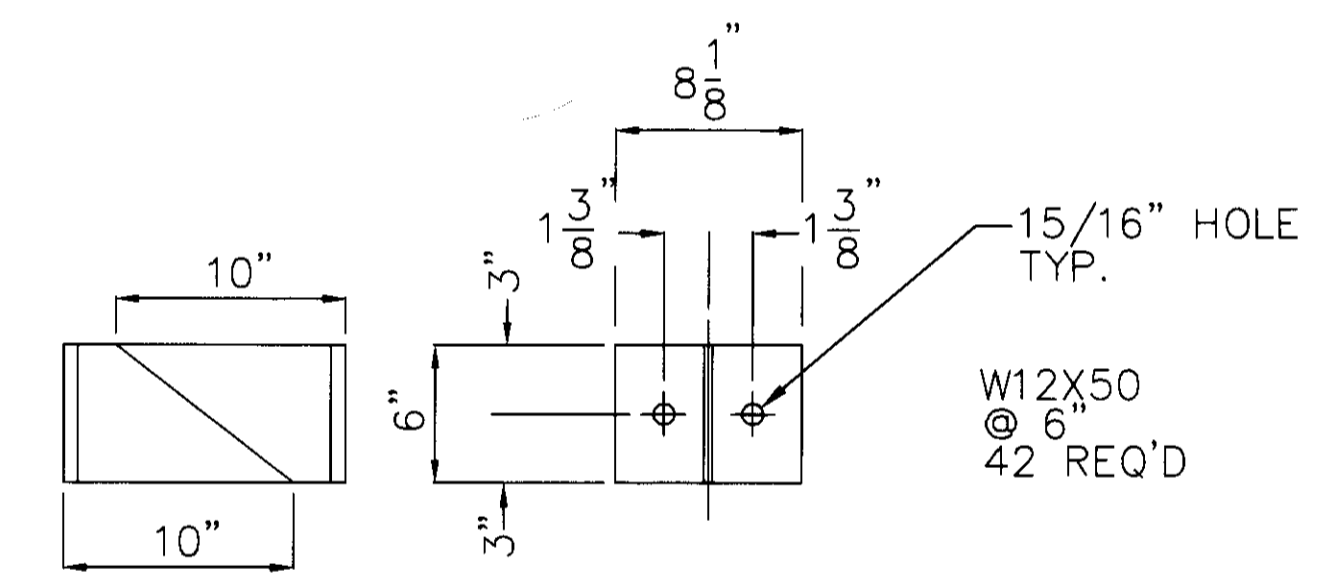
BEARING PLATE DETAIL

FIXED END

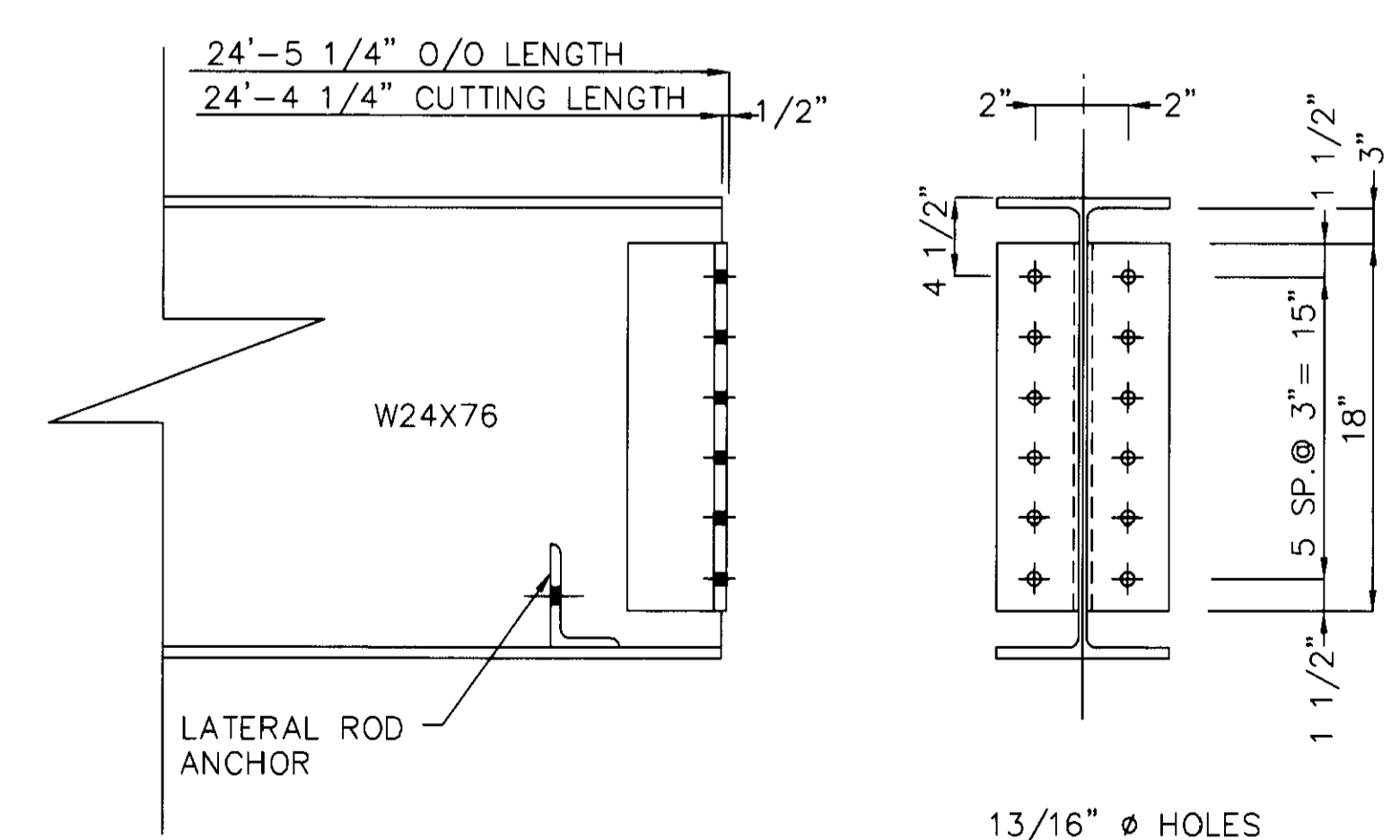
7 PLATES WITH 1 1/8" Ø HOLES AND CHANNEL - TOP PLATES
 7 PLATES WITH 1 1/8" Ø HOLES - BOTTOM PLATES

EXPANSION END

7 PLATES WITH 1 1/8" X 3" SLOTTED HOLES AND CHANNEL - TOP PLATES
 7 PLATES WITH 1 1/8" Ø HOLES - BOTTOM PLATES

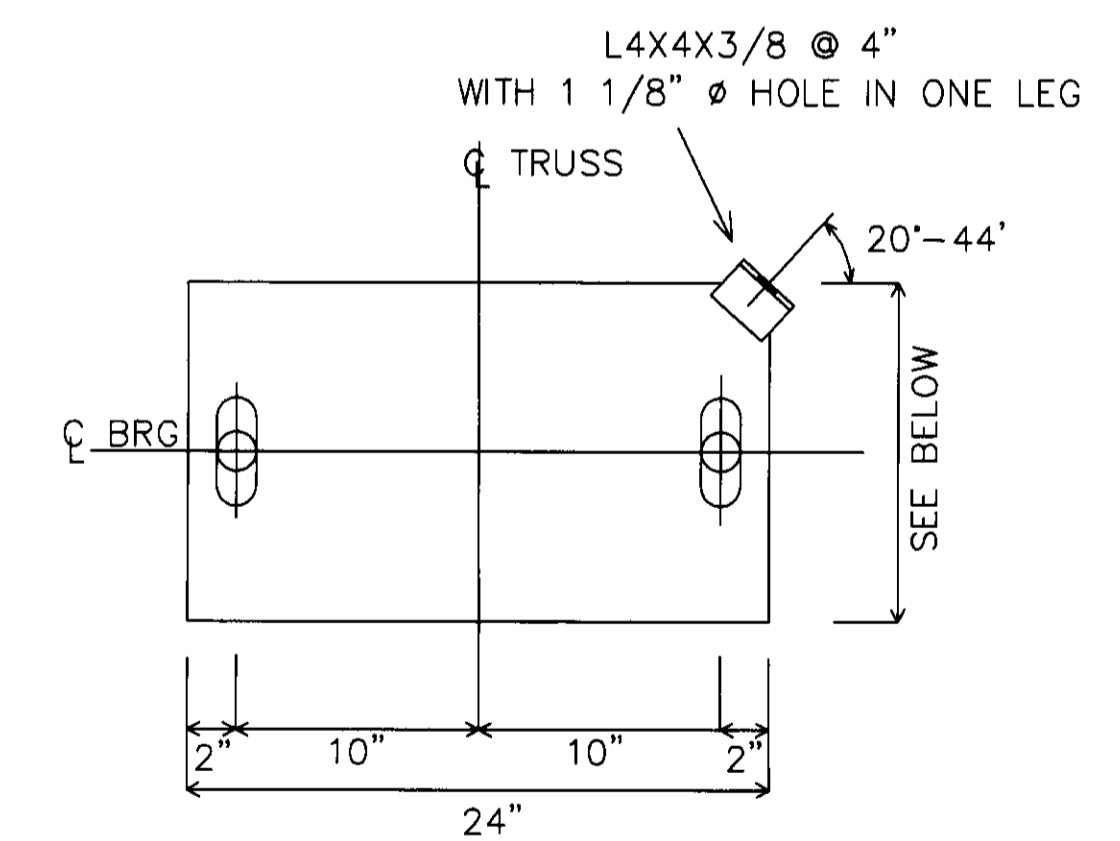


STRINGER SEAT - 42 REQ'D



FLOOR BEAM END ANGLE

L 5 X 3 1/2" X 3/8" 12 REQ'D



TRUSS BEARING PLATES

FIXED ABUTMENT

4 - P 3/4" X 14" X 24" WITH 1 5/8" Ø HOLES (TOP & BOTTOM PLATES)

EXP. ABUTMENT

2 - P 3/4" X 14" X 24" WITH 1 5/8" X 4 1/2" SLOTTED HOLES (TOP PLATES)
 2 - BRONZE P 1/4" X 12" X 24" WITH 1 5/8" Ø HOLES (MIDDLE PLATES)
 2 - P 3 1/2" X 14" X 24" WITH 1 5/8" Ø HOLES (BOTTOM PLATES)

NO	DATE	REVISIONS	BY	38'-11" TRUSS BRIDGE 24'-0" ROADWAY WIDTH CARROLL TOWNSHIP ROAD 102 BRIDGE NO. CAR-102-1.60 OTTAWA COUNTY, OHIO			
				DESIGN AG	DRAWN AG	DATE JUNE 6, 2001	DRAWING NO. CAR-102-1.60
				CHECK/DATE SAF	OHIO BRIDGE CORP.		SHEET 3 OF 4