



# OTTAWA COUNTY BENCHMARK DATA SHEET



## CAR 92-1.0

<b>Township</b>	<b>Section</b>	<b>Town</b>	<b>Range</b>	<b>Type of Monument</b>
CARROLL	30	T7N	R15E	3 1/4" Domed Bronze Disk in Concrete (OCE Spec. BM-1)
<b>Set By</b>	<b>Shot By</b>	<b>Calculated</b>	<b>Calculated By</b>	<b>Published</b>
OCE / OCHD	J. Allen	March 14, 2012	M. J. Wittman, P.S.	March 16, 2012

### Location

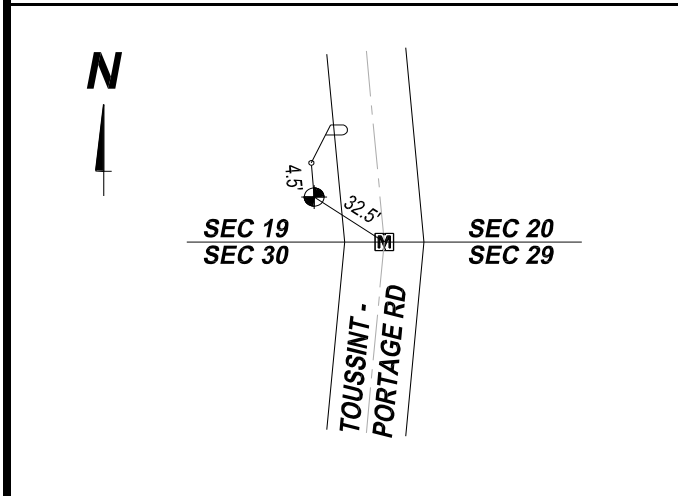
West side of Toussaint-Portage Rd., T.R. #92 1/2 mile north of Beir Rd., T.R. #97

### Vertical Control

<b>Vertical Datum</b>	<b>Method</b>	<b>Elevation (U.S. Survey Feet)</b>
NAVD 88	GPS	587.10

### Horizontal Control

<b>Horizontal Datum</b>	<b>Zone</b>	<b>Northing</b>	<b>Easting</b>
NAD 83 CORS 96	OHIO NORTH 3401	685,190.657	1,786,705.580
<b>Method</b>	<b>Latitude</b>	<b>Longitude</b>	
GPS / CORPSCON	41° 32' 43.62997" N	83° 09' 50.84703" W	
<b>Geoid</b>	<b>Scale Factor</b>	<b>Convergence</b>	
GEOID 09	0.999973857	- 00° 26' 10.66771"	



- NOTES:**
1. Monument set: July 6, 2011
  2. Data Collected: 2-2-12, 3-9-12, 3-12-12