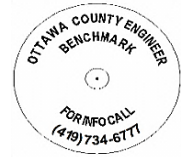


# OTTAWA COUNTY BENCHMARK DATA SHEET



## CAR 19-4.1

<b>Township</b>	<b>Section</b>	<b>Town</b>	<b>Range</b>	<b>Type of Monument</b>	
CARROLL	5	T7N	R15E	ODOT DISK	
<b>Set By</b>	<b>Shot By</b>	<b>Calculated</b>	<b>Calculated By</b>	<b>Published</b>	
ODOT	J. Allen	March 8, 2012	M. J. Wittman, P.S.	March 16, 2012	

### Location

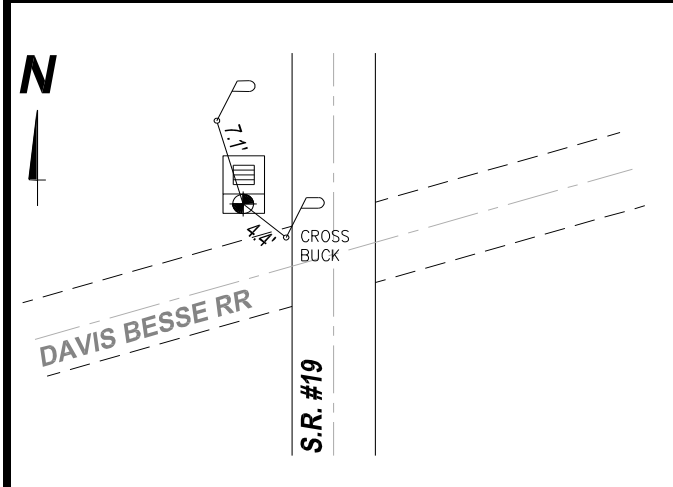
Existing bronze ODOT Disk in C.B. in the Northwest Corner of the Intersection of State Route #19 and Railroad to Davis Besse

### Vertical Control

<b>Vertical Datum</b>	<b>Method</b>	<b>Elevation (U.S. Survey Feet)</b>
NAVD 88	GPS	575.02

### Horizontal Control

<b>Horizontal Datum</b>	<b>Zone</b>	<b>Northing</b>	<b>Easting</b>
NAD 83 CORS 96	OHIO NORTH 3401	701,543.464	1,792,049.061
<b>Method</b>	<b>Latitude</b>	<b>Longitude</b>	
GPS / CORPSCON	41° 35' 25.58531" N	83° 08' 42.16608" w	
<b>Geoid</b>	<b>Scale Factor</b>	<b>Convergence</b>	
GEOID 09	0.999980712	- 00° 25' 25.54773"	



#### **NOTES:**

1. Monument set: Unknown
2. Data Collected: 2-2-12, 2-10-12, 2-27-12