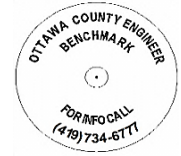


# OTTAWA COUNTY BENCHMARK DATA SHEET



## CAR 104-1.0

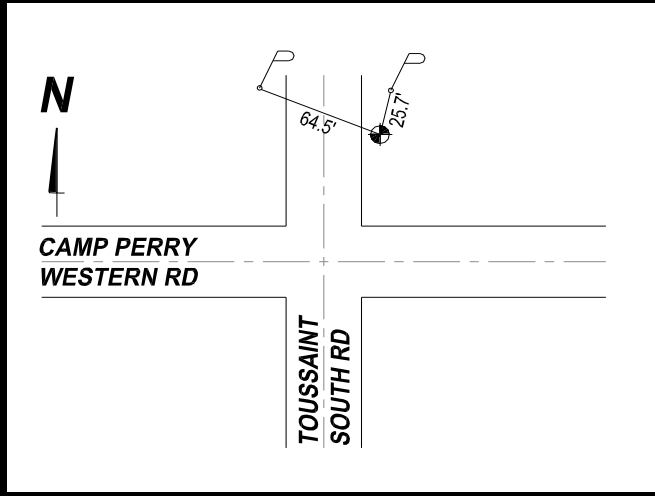
<b>Township</b>	<b>Section</b>	<b>Town</b>	<b>Range</b>	<b>Type of Monument</b>
CARROLL	24	T7N	R15E	3 1/4" Domed Bronze Disk in Concrete (OCE Spec. BM-1)
<b>Set By</b>	<b>Shot By</b>	<b>Calculated</b>	<b>Calculated By</b>	<b>Published</b>
OCE / OCHD	J. Allen	March 8, 2012	M. J. Wittman, P.S.	March 16, 2012

**Location**

East side of Toussaint South Rd., T.R. #104 north of Camp Perry Western Rd., C.R. #15

Vertical Control		
<b>Vertical Datum</b>	<b>Method</b>	<b>Elevation (U.S. Survey Feet)</b>
NAVD 88	GPS	583.99

Horizontal Control			
<b>Horizontal Datum</b>	<b>Zone</b>	<b>Northing</b>	<b>Easting</b>
NAD 83 CORS 96	OHIO NORTH 3401	685,042.543	1,807,857.832
<b>Method</b>	<b>Latitude</b>	<b>Longitude</b>	
GPS / CORPSCON	41° 32' 43.66542" N	83° 05' 12.66163" W	
<b>Geoid</b>	<b>Scale Factor</b>	<b>Convergence</b>	
GEOID 09	0.999973858	-00° 23' 07.91372"	



**NOTES:**

1. Monument set: July 5, 2011
2. Data Collected: 2-3-12, 2-13-12, 2-27-12