

OTTAWA COUNTY ENGINEERS OFFICE

REFERENCE NO. 6-7-14-G
 SW CORNER POST SECTION 6
 BENTON TWP.
 SHEET 1 OF 1.

ROUTE: C-213 NISSEN RD.
 @ T-68 WALBRIDGE EAST RD.

TOWNSHIP: BENTON

SECTION: 6

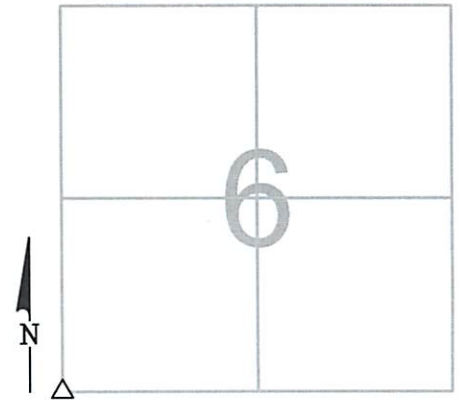
T 7 NR 14 E.

PERSONNEL:
 M. WITTMAN, P.S.
 J. ALLEN

NORTHING:

EASTING:

DATUM:

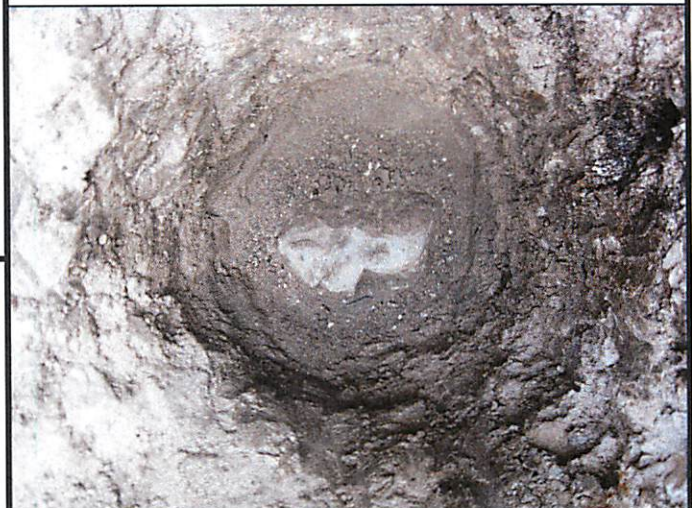


DATE / WEATHER / TEMP:
 JULY 29, 2014
 SUNNY
 68° F

MONUMENT INFORMATION

MONUMENT TYPE: FD. 5" X 6" RECTANGULAR LIMESTONE
 ON SURFACE - BELOW: 2.50'
 LEFT - CL PAV'T - RIGHT: 0.55'

 USED CENTER OF STONE.



MISC. INFORMATION

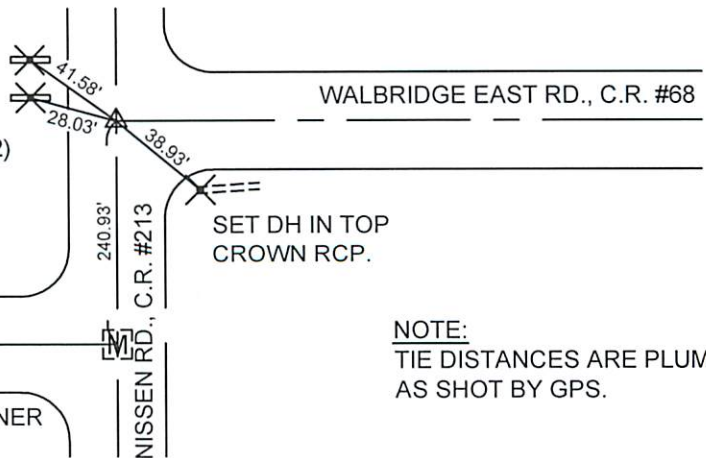
FD. RR SPIKE WITH PUNCH MARK ON SURFACE, TIED
 W/ GPS AND DUG FOR STONE OF RECORD.
 RR SPIKE WAS 0.40' WEST AND 0.19' SOUTH OF
 CENTER OF STONE.

THIS IS A CLOSING CORNER.

JULY 29, 2014

SET 1" SQUARE IRON PIN
 IN MONUMENT BOX OVER
 STONE

SET DH IN
 TOP CENTER
 OF HDWL. (X2)



WALBRIDGE EAST RD., T.R. #68

SE CORNER
 ALLEN 1

NISSEN RD., C.R. #213

NOTE:
 TIE DISTANCES ARE PLUMB
 AS SHOT BY GPS.