

# OTTAWA COUNTY ENGINEERS OFFICE

REFERENCE NO. 5-7-14-H  
 SOUTH QUARTER POST SEC. 5  
 BENTON TWP.  
 SHEET 1 OF 1.

ROUTE: T-68 WALBRIDGE EAST RD.

TOWNSHIP: BENTON

SECTION: 5

T 7 NR 14 E.

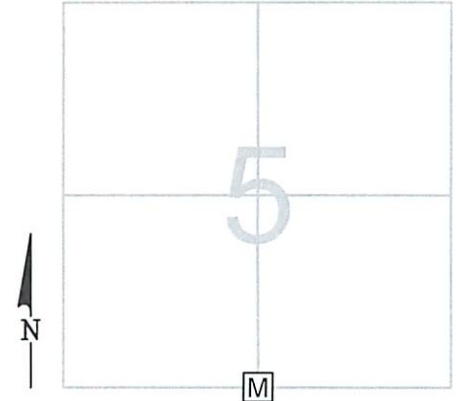
PERSONNEL:  
 M. WITTMAN, P.S.  
 J. ALLEN

NORTHING:

EASTING:

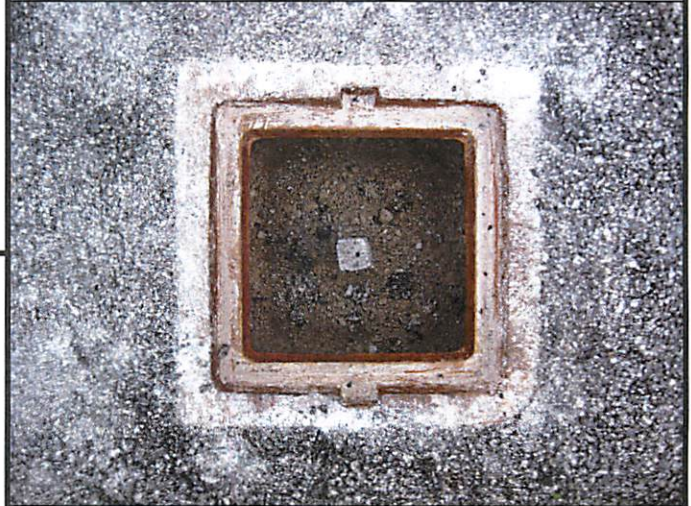
DATE / WEATHER / TEMP:  
 JUNE 22, 2015  
 SUNNY - S  
 78° F

DATUM:



### MONUMENT INFORMATION

MONUMENT TYPE: SET 1" SQ IRON PIN IN MON BOX  
ON SURFACE - BELOW:  
LEFT - CL PAV'T - RIGHT: 1.80'



### MISC. INFORMATION

FD RR SPK 0.20' BELOW SURFACE, TIED W/ X-TIES  
 AND DUG FOR STONE OR IRON PIN OF RECORD.  
 DUG DOWN TO CLAY AND DID NOT FIND A STONE  
 OR A PIN. SET 1" SQUARE IRON IN MONUMENT BOX  
 AT LOCATION OF FD RR SPK.

JUNE 22, 2015

SET 1" SQ IRON PIN IN  
 MONUMENT BOX

