

OTTAWA COUNTY ENGINEERS OFFICE

REFERENCE NO. 4-7-14-F
EAST QUARTER POST SEC. 4
BENTON TWP.
SHEET 1 OF 1.

ROUTE: T-21 STANGE RD.

TOWNSHIP: BENTON

SECTION: 4

T 7 NR 14 E.

PERSONNEL:
M. WITTMAN, P.S.
J. ALLEN

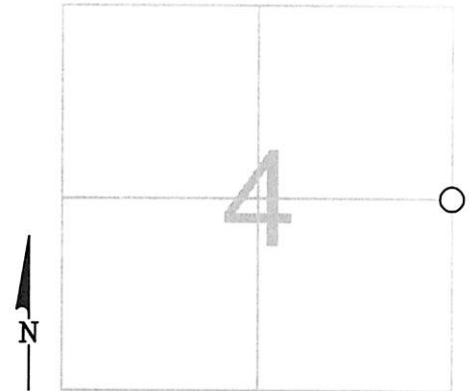
NORTHING:

EASTING:

DATUM:

DATE / WEATHER / TEMP:

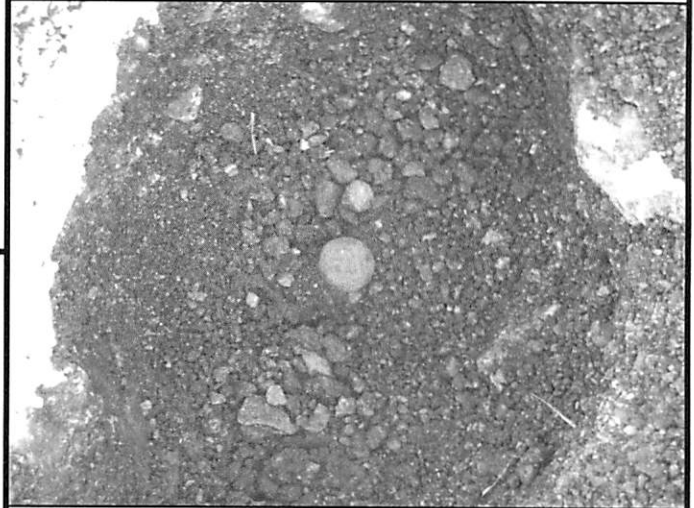
SEPTEMBER 18, 2008
SUNNY NE
67° F



MONUMENT INFORMATION

MONUMENT TYPE: FD. $\frac{3}{4}$ " \varnothing IRON PIN
ON SURFACE - BELOW: 0.93'
LEFT - CL PAV'T - RIGHT: 7.8'

FD. IRON PIN IS 0.75' EAST OF WEST EDGE OF
PAVEMENT



MISC. INFORMATION

SEPTEMBER 18, 2008

SET MONUMENT BOX OVER
EXISTING PIN

