

# OTTAWA COUNTY ENGINEERS OFFICE

REFERENCE NO. 34-7-14-A  
NW CORNER SECTION 34  
BENTON TWP.  
SHEET 1 OF 1.

PERSONNEL:  
M. WITTMAN, P.S.  
M. ULLRICH

DATE / WEATHER / TEMP:  
SEPTEMBER 3, 2008  
SUNNY HUMID  
85° F

ROUTE: T-21 STANGE RD.  
@ T-78 SONDERGELD RD.

TOWNSHIP: BENTON

SECTION: 34

T 7 NR 14 E.

NORTHING:

EASTING:

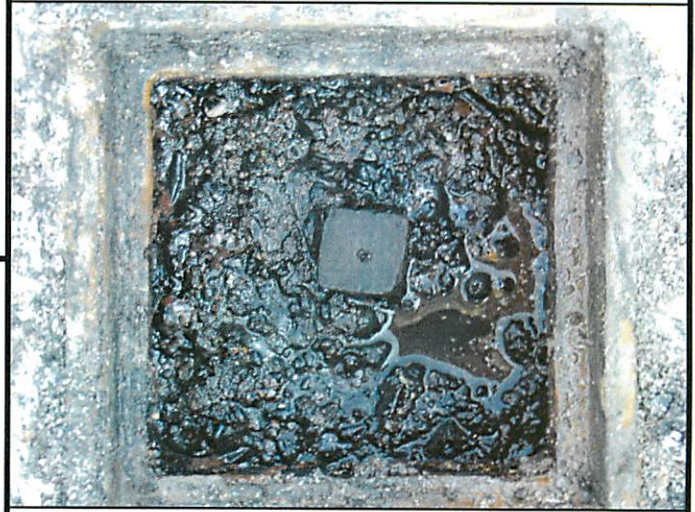
DATUM:

[M]



## MONUMENT INFORMATION

MONUMENT TYPE: FD. 1" SQUARE IRON PIN IN  
MONUMENT BOX  
ON SURFACE - BELOW: 0.33'  
LEFT - CL PAV'T - RIGHT: 3.5'



## MISC. INFORMATION

SEPTEMBER 3, 2008

BROUGHT TO SURFACE

