

OTTAWA COUNTY ENGINEERS OFFICE

REFERENCE NO. 33-8-14-G
SW CORNER SECTION 33
BENTON TWP.
SHEET 1 OF 1.

PERSONNEL:
M. WITTMAN, P.S.
J. ALLEN

DATE / WEATHER / TEMP:
SEPTEMBER 29, 2008
OVERCAST E
65° F

ROUTE: T-19 GRAYTOWN RD.
@ STATE ROUTE # 579

TOWNSHIP: BENTON

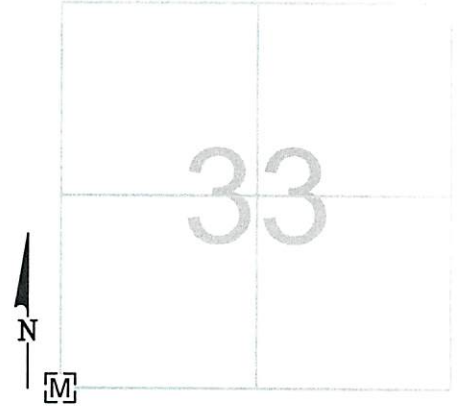
SECTION: 33

T 8 NR 14 E.

NORTHING:

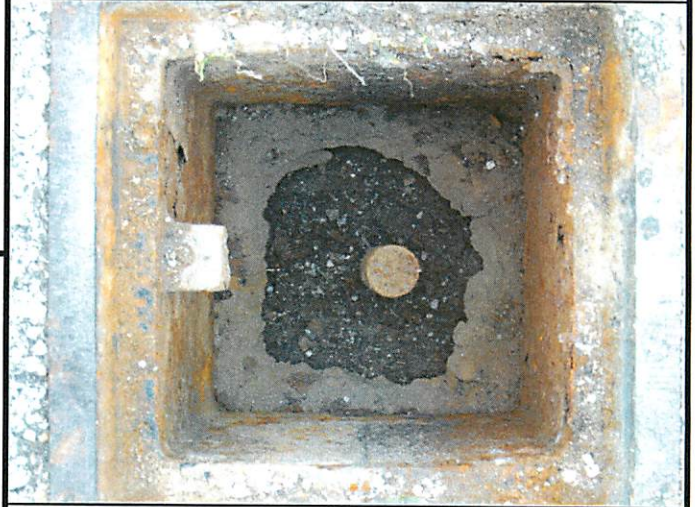
EASTING:

DATUM:



MONUMENT INFORMATION

MONUMENT TYPE: FD 3/4" Ø IRON PIN IN
MONUMENT BOX
ON SURFACE - BELOW:
LEFT - CL PAV'T - RIGHT: 3.15'



MISC. INFORMATION

