

# OTTAWA COUNTY ENGINEERS OFFICE

REFERENCE NO. 32-8-14-1  
SE CORNER SECTION 32  
BENTON TWP.  
SHEET 1 OF 1.

PERSONNEL:  
M. WITTMAN, P.S.  
J. ALLEN

DATE / WEATHER / TEMP:  
SEPTEMBER 29, 2008  
OVERCAST E  
65° F

ROUTE: T-19 GRAYTOWN RD.  
@ STATE ROUTE # 579

TOWNSHIP: BENTON

SECTION: 32

T 8 NR 14 E.

NORTHING:

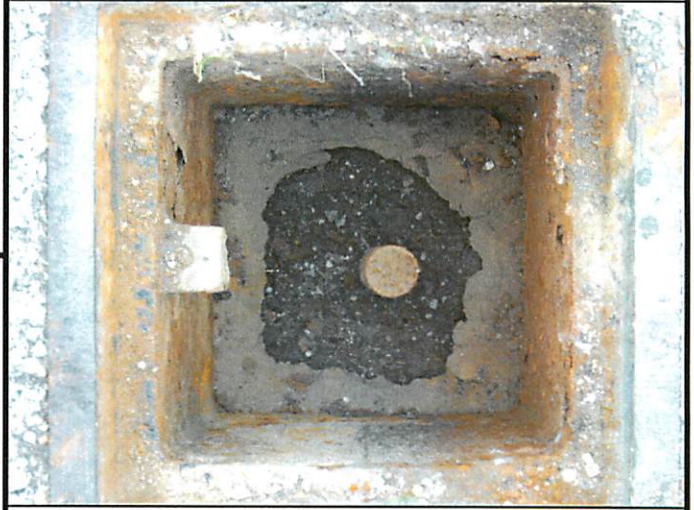
EASTING:

DATUM:



## MONUMENT INFORMATION

MONUMENT TYPE: FD 3/4" Ø IRON PIN IN  
MONUMENT BOX  
ON SURFACE - BELOW:  
LEFT - CL PAV'T - RIGHT: 3.15'



## MISC. INFORMATION

