

OTTAWA COUNTY ENGINEERS OFFICE

REFERENCE NO. 32-8-14-G
SW CORNER SECTION 32
BENTON TWP.
SHEET 1 OF 1.

PERSONNEL:
M. WITTMAN, P.S.
J. ALLEN

DATE / WEATHER / TEMP:
SEPTEMBER 16, 2008
SUNNY W-NW
68° F

ROUTE: C-208 ELLISTON-TROWBRIDGE RD.
@ STATE ROUTE # 579

TOWNSHIP: BENTON

SECTION: 32

T 8 NR 14 E.

NORTHING:

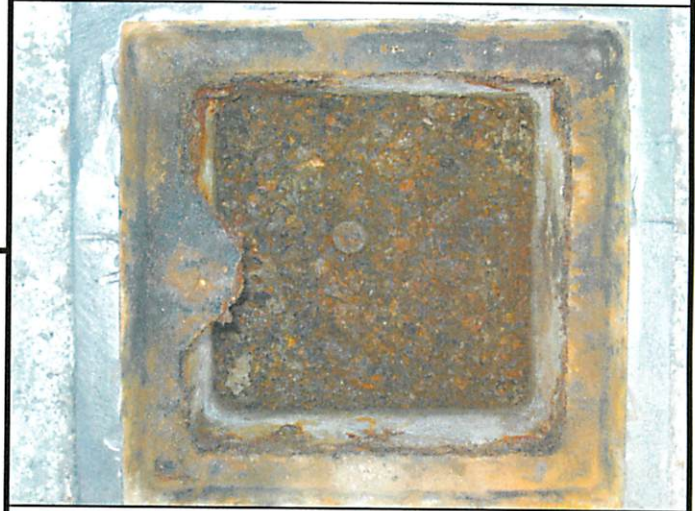
EASTING:

DATUM:



MONUMENT INFORMATION

MONUMENT TYPE: FD 5/8" Ø IRON PIN IN
MONUMENT BOX
ON SURFACE - BELOW:
LEFT - CL PAVT - RIGHT: 1.5'



MISC. INFORMATION

