

OTTAWA COUNTY ENGINEERS OFFICE

REFERENCE NO. 32-7-14-1
SE CORNER POST SECTION 32
BENTON TWP.
SHEET 1 OF 1.

ROUTE: C-19 GRAYTOWN RD.
@ S-163

TOWNSHIP: BENTON

SECTION: 32

T 7 NR 14 E.

NORTHING:

EASTING:

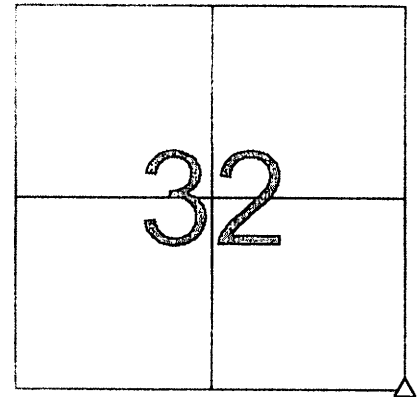
DATUM:

PERSONNEL:

R. NUHFER, P.S.
M. BROUGH
A. WEIRICH, P.S. - BEC
J. GLASS - BEC

DATE / WEATHER / TEMP:

JANUARY 5, 2000
FAIR
35° F



MONUMENT INFORMATION

MONUMENT TYPE: FD HARDHEAD STONE
ON SURFACE - BELOW: 2.17'
LEFT - CL PAV'T - RIGHT:
RECTANGULAR STONE: 9" x 6" x 8"

MISC. INFORMATION

FD 2-3/4" HEXHEAD IRON PIN 0.91' BELOW
SURFACE - REMOVED, FD RAILROAD SPIKE
UNDER PIN 1.83' BELOW SURFACE - REMOVED
AND DUG TO STONE

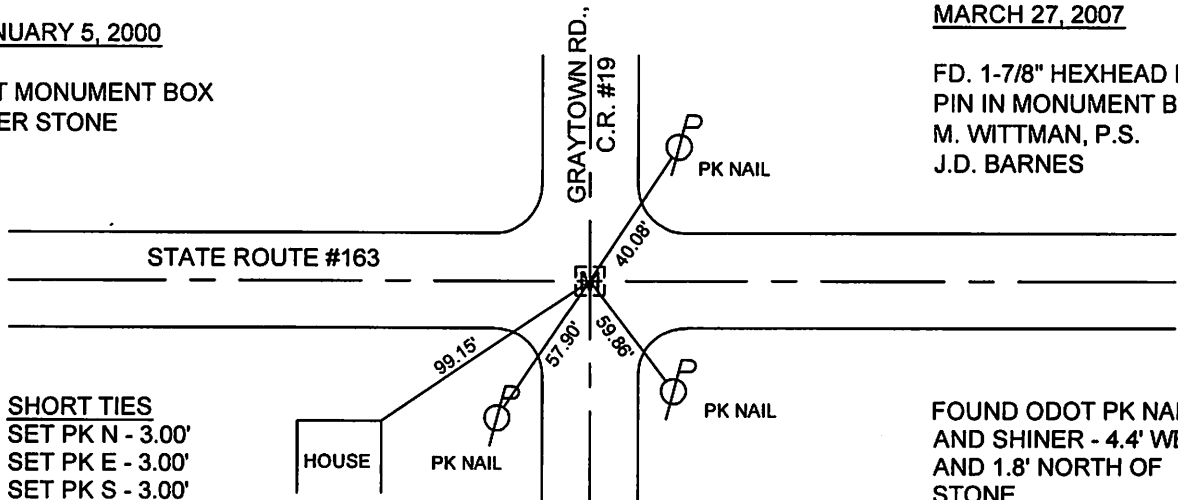
PHOTO OF STONE NOT AVAILABLE

JANUARY 5, 2000

SET MONUMENT BOX
OVER STONE

MARCH 27, 2007

FD. 1-7/8" HEXHEAD IRON
PIN IN MONUMENT BOX
M. WITTMAN, P.S.
J.D. BARNES



SHORT TIES
SET PK N - 3.00'
SET PK E - 3.00'
SET PK S - 3.00'

FOUND ODOT PK NAIL
AND SHINER - 4.4' WEST
AND 1.8' NORTH OF
STONE