

OTTAWA COUNTY ENGINEERS OFFICE

REFERENCE NO. 31-8-14-G
SW CORNER SECTION 31
BENTON TWP.
SHEET 1 OF 1.

ROUTE: C-213 NISSEN RD.
@ STATE ROUTE #579

TOWNSHIP: BENTON
SECTION: 31

T 8 NR 14 E.

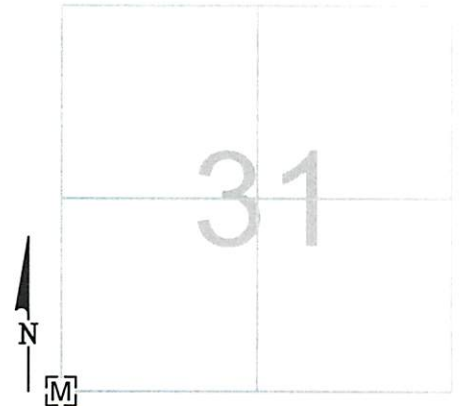
PERSONNEL:
M. WITTMAN, P.S.
J. ALLEN

NORTHING:

EASTING:

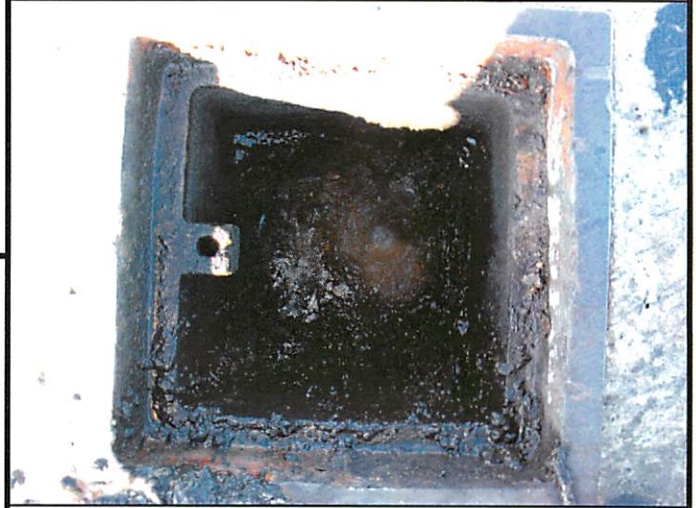
DATE / WEATHER / TEMP:
OCTOBER 14, 2008
SUNNY NW
73° F

DATUM:



MONUMENT INFORMATION

MONUMENT TYPE: FD. $\frac{5}{16}$ " \varnothing IRON PIN IN
MONUMENT BOX
ON SURFACE - BELOW:
LEFT - CL PAV'T - RIGHT: 3.70'



MISC. INFORMATION

