

OTTAWA COUNTY ENGINEERS OFFICE

REFERENCE NO. 31-7-14-D
WEST QUARTER POST SEC. 31
BENTON TWP.
SHEET 1 OF 1.

ROUTE: C-213 NISSEN RD.

TOWNSHIP: BENTON

SECTION: 31

T 7 NR 14 E.

PERSONNEL:

M. WITTMAN, P.S.
J. ALLEN
S. ULLRICH
M. ULLRICH

NORTHING:

EASTING:

DATE / WEATHER / TEMP:

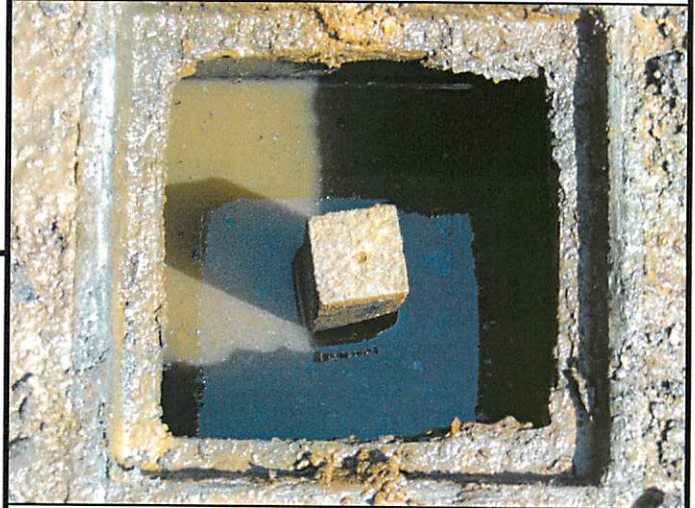
JULY 1, 2008
SUNNY
71° F

DATUM:



MONUMENT INFORMATION

MONUMENT TYPE: FD. 1 1/4" SQUARE IRON PIN W/
DRILL HOLE IN MONUMENT BOX
ON SURFACE - BELOW: 0.27'
LEFT - CL PAV'T - RIGHT: 1.5'



MISC. INFORMATION

THIS IS A CLOSING CORNER

JULY 1, 2008

PLACED RISERS TO BRING
MONUMENT TO SURFACE

