

# OTTAWA COUNTY ENGINEERS OFFICE

REFERENCE NO. 3-7-14-D  
WEST QUARTER POST SEC. 3  
BENTON TWP.  
SHEET 1 OF 1.

ROUTE: T-21 STANGE RD.

TOWNSHIP: BENTON

SECTION: 3

T 7 NR 14 E.

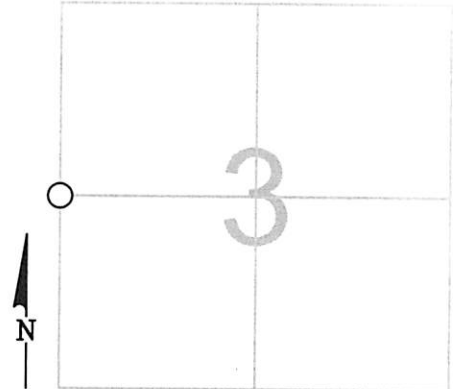
**PERSONNEL:**

M. WITTMAN, P.S.  
J. ALLEN

NORTHING:

EASTING:

DATUM:



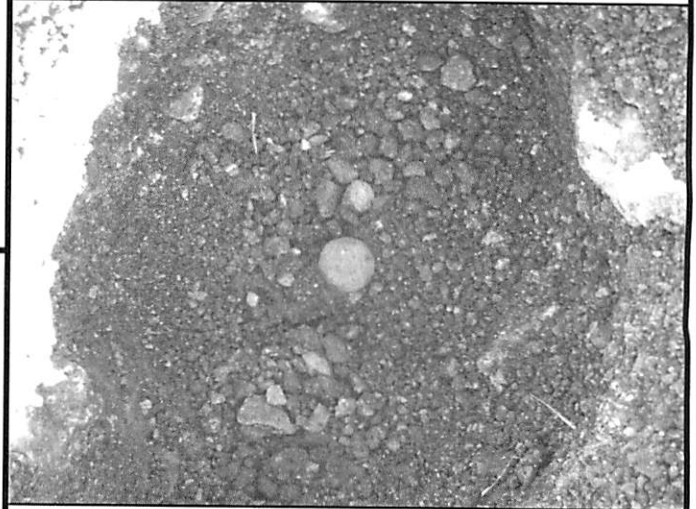
**DATE / WEATHER / TEMP:**

SEPTEMBER 18, 2008  
SUNNY NE  
67° F

MONUMENT INFORMATION

MONUMENT TYPE: FD.  $\frac{3}{4}$ "  $\varnothing$  IRON PIN  
ON SURFACE - BELOW: 0.93'  
LEFT - CL PAV'T - RIGHT: 7.8'

FD. IRON PIN IS 0.75' EAST OF WEST EDGE OF  
PAVEMENT



MISC. INFORMATION

SEPTEMBER 18, 2008

SET MONUMENT BOX OVER  
EXISTING PIN

