

OTTAWA COUNTY ENGINEERS OFFICE

REFERENCE NO. 29-8-14-A
NW CORNER POST SEC. 29
BENTON TWP.
SHEET 1 OF 1.

PERSONNEL:
M. WITTMAN, P.S.
J. ALLEN
C. MILLER

DATE / WEATHER / TEMP:
APRIL 26, 2013
SUNNY
59° F

ROUTE: C-208 ELLISTON-TROWBRIDGE RD.
@ OTTAWA - LUCAS CO. LINE

TOWNSHIP: BENTON

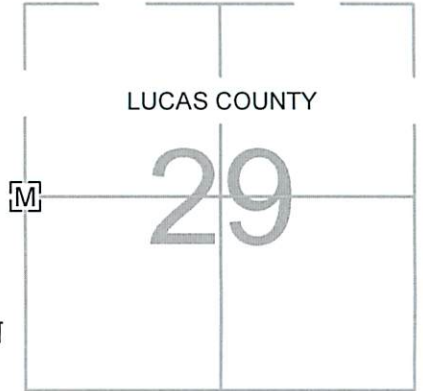
SECTION: 29

T 8 NR 14 E.

NORTHING:

EASTING:

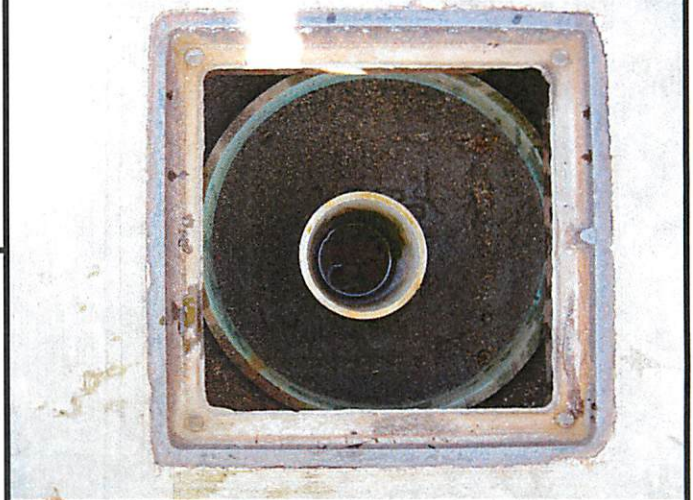
DATUM:



MONUMENT INFORMATION

MONUMENT TYPE: FD 3/4" Ø IRON PIN IN MON BOX
ON SURFACE - BELOW:
LEFT - CL PAV'T - RIGHT:

ION PIN 1.12' BELOW SURFACE IN MON BOX



MISC. INFORMATION

