

# OTTAWA COUNTY ENGINEERS OFFICE

REFERENCE NO. 29-7-14-E  
CENTER POST SECTION 29  
BENTON TWP.  
SHEET 1 OF 1.

ROUTE: T-77 TRUE RD.

TOWNSHIP: BENTON

SECTION: 29

T 7 NR 14 E.

PERSONNEL:  
M. WITTMAN, P.S.  
J. ALLEN

NORTHING:

EASTING:

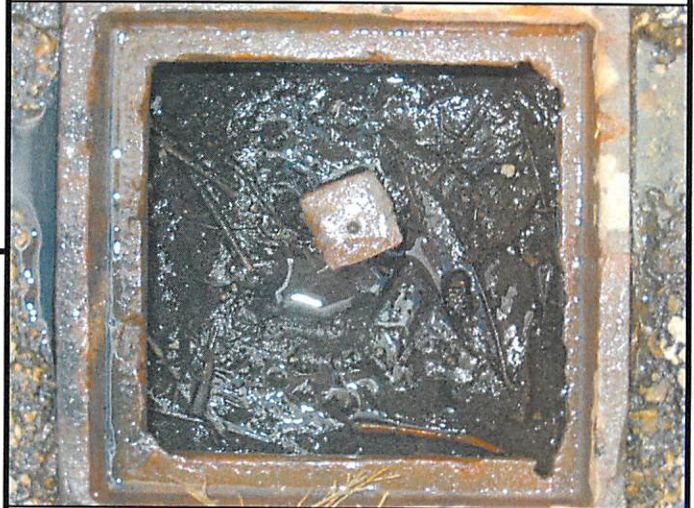
DATUM:

DATE / WEATHER / TEMP:  
SEPTEMBER 16, 2008  
OVERCAST N-NW  
67° F



## MONUMENT INFORMATION

MONUMENT TYPE: FD. 1" SQUARE IRON PIN IN  
MONUMENT BOX  
ON SURFACE - BELOW:  
LEFT - CL PAV'T - RIGHT: 5.5'



## MISC. INFORMATION

