

OTTAWA COUNTY ENGINEERS OFFICE

REFERENCE NO. 28-7-14-A
NW CORNER SEC. 28
BENTON TWP.
SHEET 1 OF 1.

ROUTE: C-19 GRAYTOWN RD.

TOWNSHIP: BENTON

SECTION: 28

T 7 NR 14 E.

PERSONNEL:

M. WITTMAN, P.S.
J. ALLEN

NORTHING:

EASTING:

DATE / WEATHER / TEMP:

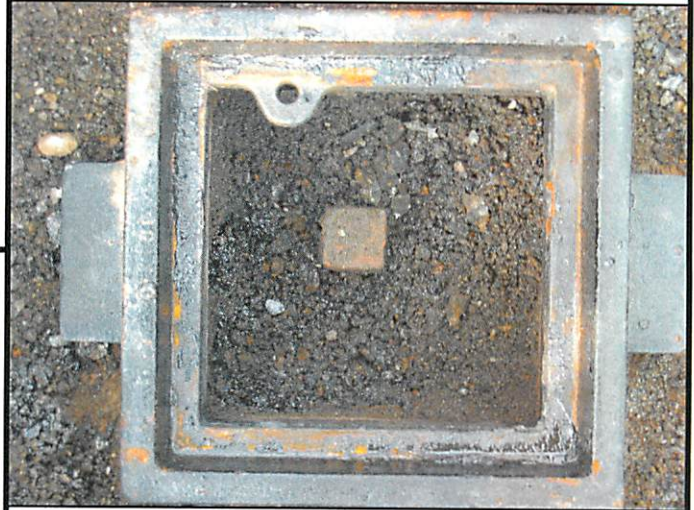
SEPTEMBER 29, 2008
SUNNY
76° F

DATUM:



MONUMENT INFORMATION

MONUMENT TYPE: FD. 1" SQUARE IRON PIN
W/ DRILL HOLE IN MONUMENT BOX
ON SURFACE - BELOW: 0.37'
LEFT - CL PAV'T - RIGHT: 2.75'



MISC. INFORMATION

SEPTEMBER 29, 2008

RAISED TO SURFACE

