

OTTAWA COUNTY ENGINEERS OFFICE

REFERENCE NO. 27-7-14-G
SW CORNER SECTION 27
BENTON TWP.
SHEET 1 OF 1.

PERSONNEL:
M. WITTMAN, P.S.
M. ULLRICH

DATE / WEATHER / TEMP:
SEPTEMBER 3, 2008
SUNNY HUMID
85° F

ROUTE: T-21 STANGE RD.
@ T-78 SONDERGELD RD.

TOWNSHIP: BENTON

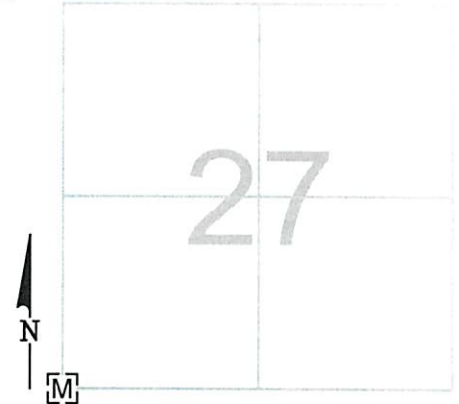
SECTION: 27

T 7 NR 14 E.

NORTHING:

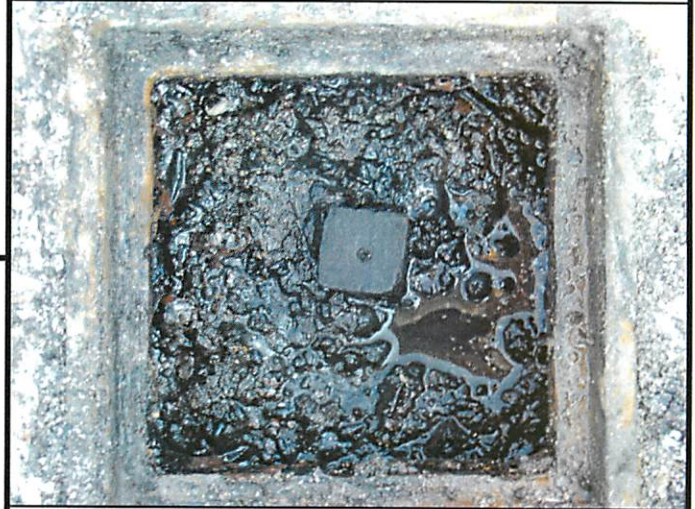
EASTING:

DATUM:



MONUMENT INFORMATION

MONUMENT TYPE: FD. 1" SQUARE IRON PIN IN
MONUMENT BOX
ON SURFACE - BELOW: 0.33'
LEFT - CL PAV'T - RIGHT: 3.5'



MISC. INFORMATION

SEPTEMBER 3, 2008

BROUGHT TO SURFACE

