

OTTAWA COUNTY ENGINEERS OFFICE

REFERENCE NO. 21-7-14-G
SW CORNER SEC. 21
BENTON TWP.
SHEET 1 OF 1.

PERSONNEL:
M. WITTMAN, P.S.
J. ALLEN

DATE / WEATHER / TEMP:
SEPTEMBER 29, 2008
SUNNY
76° F

ROUTE: C-19 GRAYTOWN RD.

TOWNSHIP: BENTON

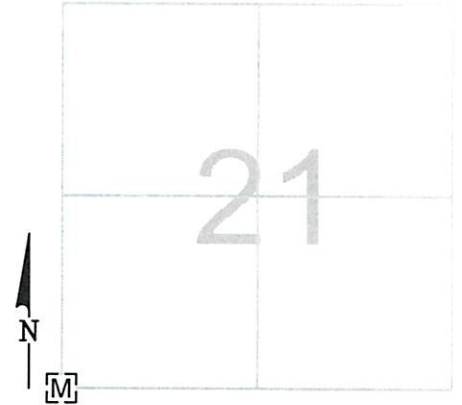
SECTION: 21

T 7 NR 14 E.

NORTHING:

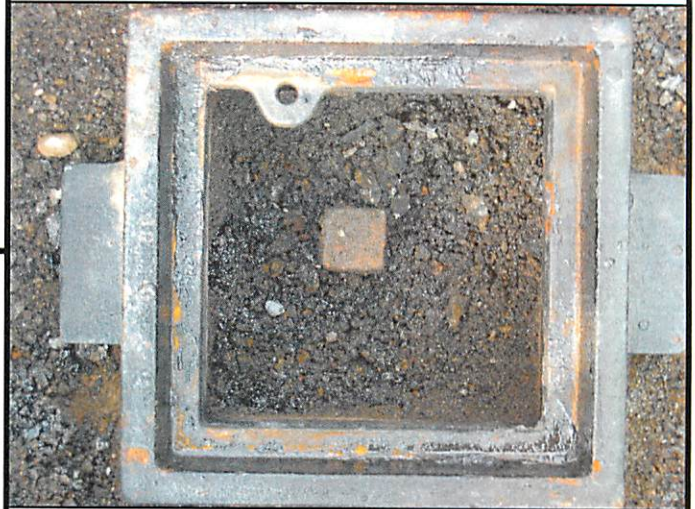
EASTING:

DATUM:



MONUMENT INFORMATION

MONUMENT TYPE: FD. 1" SQUARE IRON PIN
W/ DRILL HOLE IN MONUMENT BOX
ON SURFACE - BELOW: 0.37'
LEFT - CL PAV'T - RIGHT: 2.75'



MISC. INFORMATION

SEPTEMBER 29, 2008

RAISED TO SURFACE

