

OTTAWA COUNTY ENGINEERS OFFICE

REFERENCE NO. 21-7-14-E
CENTER POST SECTION 21
BENTON TWP.
SHEET 1 OF 1.

ROUTE: T-20 SUHRBIER RD.

TOWNSHIP: BENTON

SECTION: 21

T 7 NR 14 E.

PERSONNEL:

M. WITTMAN, P.S.
M. BROUGH
R. STONER

NORTHING:

EASTING:

DATE / WEATHER / TEMP:

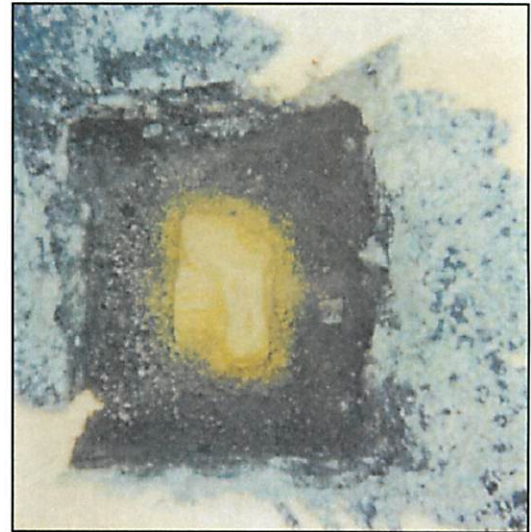
JULY 16, 2003
SUNNY
73° F

DATUM:



MONUMENT INFORMATION

MONUMENT TYPE: FD LIMESTONE W/ DRILL HOLE
ON SURFACE - BELOW: 0.82'
LEFT - CL PAV'T - RIGHT: (T-20)
RECTANGULAR STONE: 9- $\frac{1}{8}$ " x 6"



MISC. INFORMATION

NOTHING IN AREA TO USE FOR LONG TIES.

JULY 16, 2003

SET MONUMENT BOX OVER
STONE

SHORT TIES (EXISTING)
PUNCH HOLE RR SPK N - 2.99'
PUNCH HOLE RR SPK E - 2.97'
PUNCH HOLE RR SPK S - 3.05'

— — — — —
SUHRBIER RD., T.R. #20
— — — — —