

OTTAWA COUNTY ENGINEERS OFFICE

REFERENCE NO. 21-7-14-A
NW CORNER SECTION 21
BENTON TWP.
SHEET 1 OF 1.

PERSONNEL:
M. WITTMAN, P.S.
M. ULLRICH

DATE / WEATHER / TEMP:
SEPTEMBER 3, 2008
SUNNY HUMID
92° F

ROUTE: C-19 GRAYTOWN RD.
@ T-66 MOLINE-MARTIN RD. [M]

TOWNSHIP: BENTON

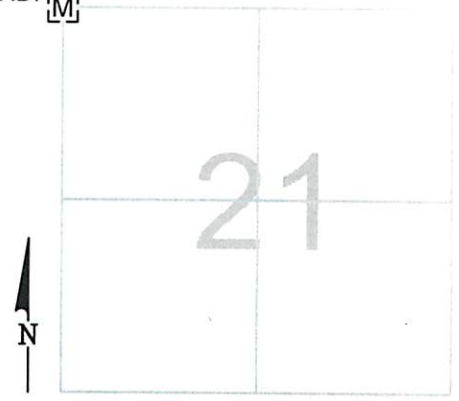
SECTION: 21

T 7 NR 14 E.

NORTHING:

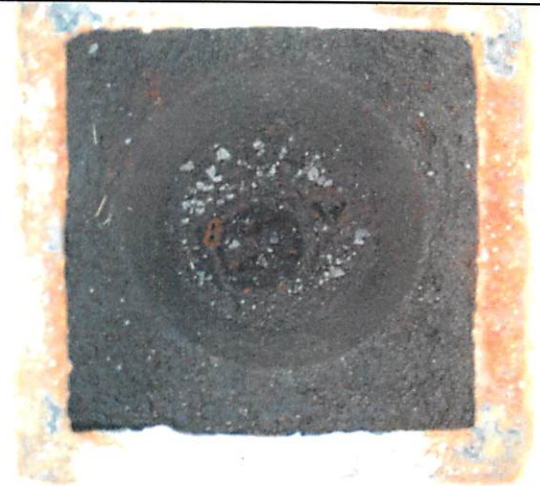
EASTING:

DATUM:



MONUMENT INFORMATION

MONUMENT TYPE: FD. 2" O.D. IRON PIPE IN ROUND
MONUMENT BOX IN SQUARE MONUMENT BOX
ON SURFACE - BELOW:
LEFT - CL PAV'T - RIGHT: 4.85'



MISC. INFORMATION

