

# OTTAWA COUNTY ENGINEERS OFFICE

REFERENCE NO. 20-7-14-1  
SE CORNER SEC. 20  
BENTON TWP.  
SHEET 1 OF 1.

ROUTE: C-19 GRAYTOWN RD.

TOWNSHIP: BENTON

SECTION: 20

T 7 NR 14 E.

**PERSONNEL:**

M. WITTMAN, P.S.  
J. ALLEN

NORTHING:

EASTING:

DATUM:

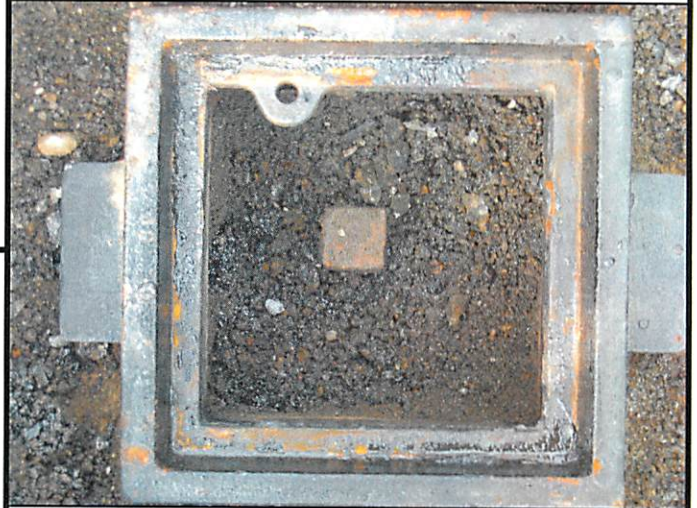


**DATE / WEATHER / TEMP:**

SEPTEMBER 29, 2008  
SUNNY  
76° F

MONUMENT INFORMATION

MONUMENT TYPE: FD. 1" SQUARE IRON PIN  
W/ DRILL HOLE IN MONUMENT BOX  
ON SURFACE - BELOW: 0.37'  
LEFT - CL PAV'T - RIGHT: 2.75'



MISC. INFORMATION

SEPTEMBER 29, 2008

RAISED TO SURFACE

