

OTTAWA COUNTY ENGINEERS OFFICE

REFERENCE NO. 20-7-14-A
 NW CORNER POST SECTION 20
 BENTON TWP.
SHEET 1 OF 1.

ROUTE: C-208 ELLISTON-TROWBRIDGE RD.
 @ T-66 MOLINE MARTIN RD.

TOWNSHIP: BENTON

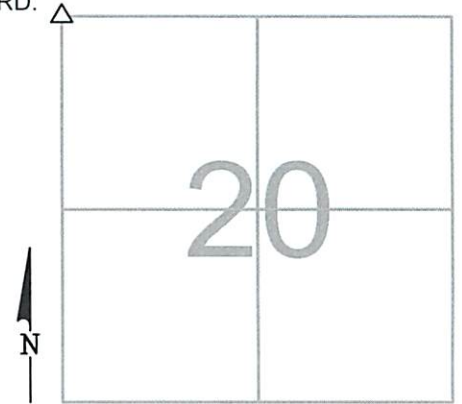
SECTION: 20

T 7 **NR** 14 **E.**

NORTHING:

EASTING:

DATUM:



PERSONNEL:

R. NUHFER, P.S.
 M. BROUGH
 K. MOORE
 R. LAJTI
 N. SANTOYA

DATE / WEATHER / TEMP:

JULY 11, 2002
 SUNNY
 78° F

MONUMENT INFORMATION

MONUMENT TYPE: FD LIMESTONE
 ON SURFACE - BELOW: 1.08'
 LEFT - CL PAV'T - RIGHT:
 RECTANGULAR STONE: 21/2" x 5" (TOP)

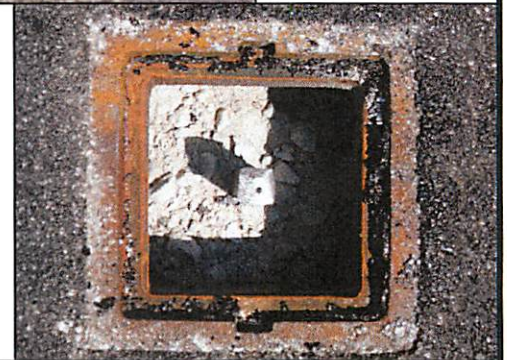
 USED FD DRILL HOLE



MISC. INFORMATION

STONE WAS REMOVED IN JULY 2011 DURING
 X-OVER REPLACEMENT PROJECT.

 RESET 1" SQUARE IRON PIN IN CONCRETE ON
 JULY 22, 2011, MW, JA, JL.

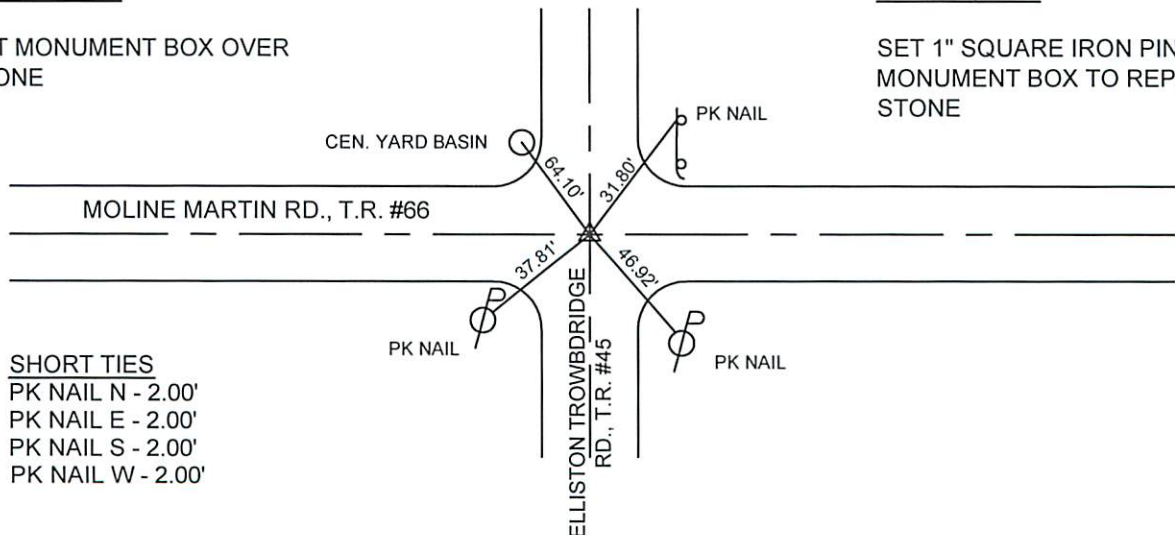


JULY 11, 2002

SET MONUMENT BOX OVER
 STONE

JULY 22, 2011

SET 1" SQUARE IRON PIN IN
 MONUMENT BOX TO REPLACE
 STONE



SHORT TIES
 PK NAIL N - 2.00'
 PK NAIL E - 2.00'
 PK NAIL S - 2.00'
 PK NAIL W - 2.00'