

OTTAWA COUNTY ENGINEERS OFFICE

REFERENCE NO. 20-7-14-A
 NW CORNER POST SECTION 20
 BENTON TWP.
SHEET 1 OF 1.

ROUTE: C-208 ELLISTON-TROWBRIDGE RD.
 @ T-66 MOLINE MARTIN RD. Δ

TOWNSHIP: BENTON

SECTION: 20

T 7 NR 14 E.

NORTHING:

EASTING:

DATUM:



PERSONNEL:

R. NUHFER, P.S.
 M. BROUGH
 K. MOORE
 R. LAJTI
 N. SANTOYA

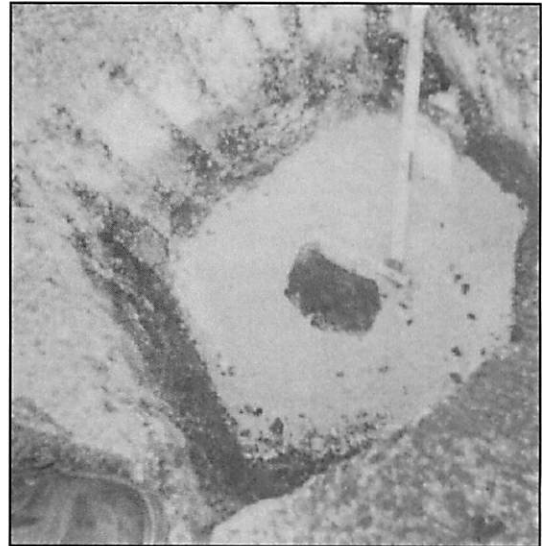
DATE / WEATHER / TEMP:

JULY 11, 2002
 SUNNY
 78° F

MONUMENT INFORMATION

MONUMENT TYPE: FD LIMESTONE
 ON SURFACE - BELOW: 1.08'
 LEFT - CL PAV'T - RIGHT:
 RECTANGULAR STONE: 21/2" x 5" (TOP)

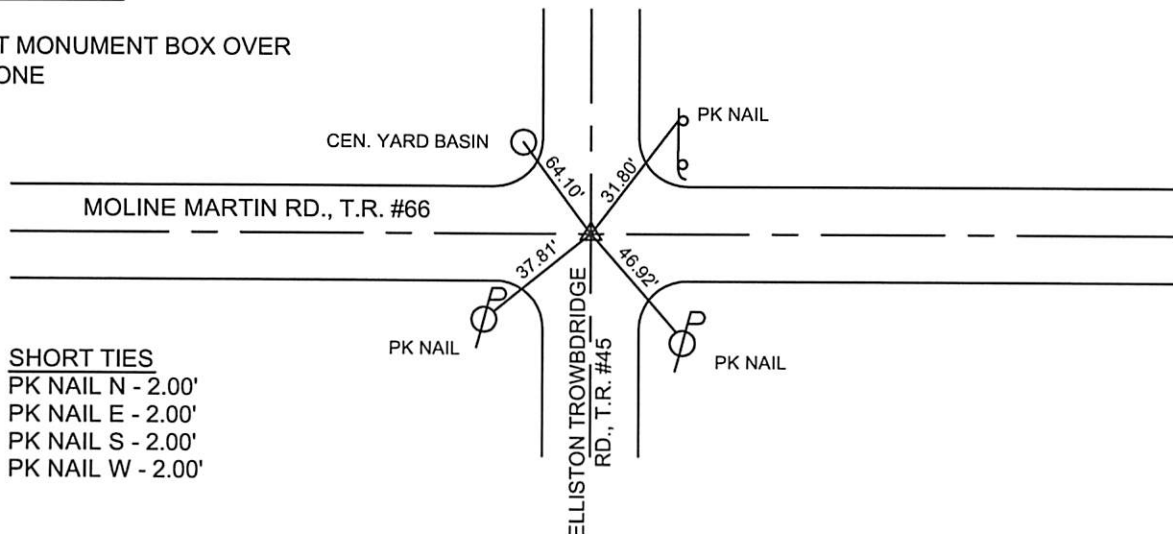
USED FD DRILL HOLE



MISC. INFORMATION

JULY 22, 2002

SET MONUMENT BOX OVER
 STONE



SHORT TIES
 PK NAIL N - 2.00'
 PK NAIL E - 2.00'
 PK NAIL S - 2.00'
 PK NAIL W - 2.00'