

# OTTAWA COUNTY ENGINEERS OFFICE

REFERENCE NO. 2-7-14-1  
 SE CORNER POST SEC. 2  
 BENTON TWP.  
 SHEET 1 OF 1.

ROUTE: C-22 LICKERT - HARDER RD.  
 @ C-24 DUFF WASHA RD.

TOWNSHIP: BENTON

SECTION: 2

T 7 NR 14 E.

NORTHING:

EASTING:

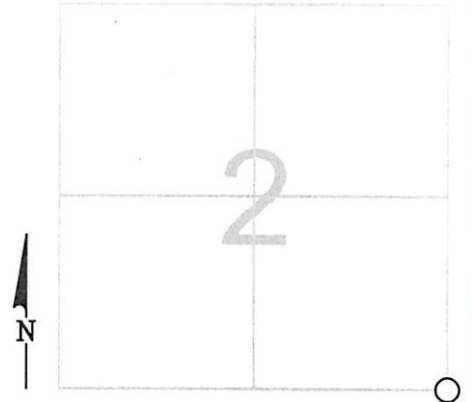
DATUM:

**PERSONNEL:**

M. WITTMAN, P.S.  
 J. ALLEN  
 C. MILLER  
 A. WEIRICH, P.S - BEC ASSOC.  
 J. HAYES - BEC ASSOC.

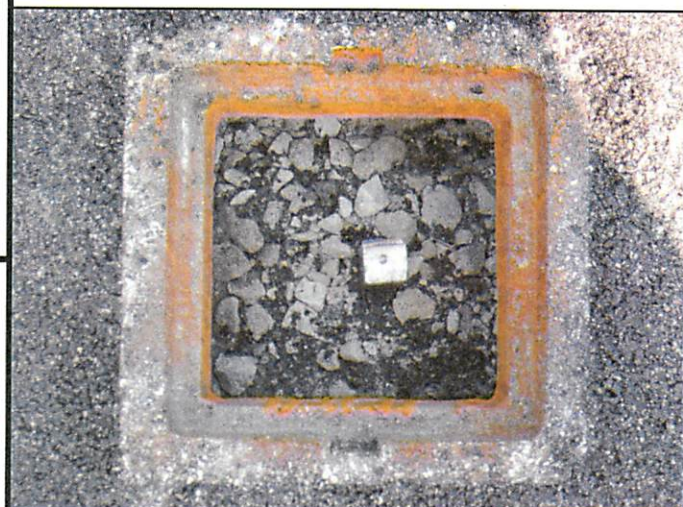
**DATE / WEATHER / TEMP:**

APRIL 15, 2010  
 SUNNY - SE  
 72° F



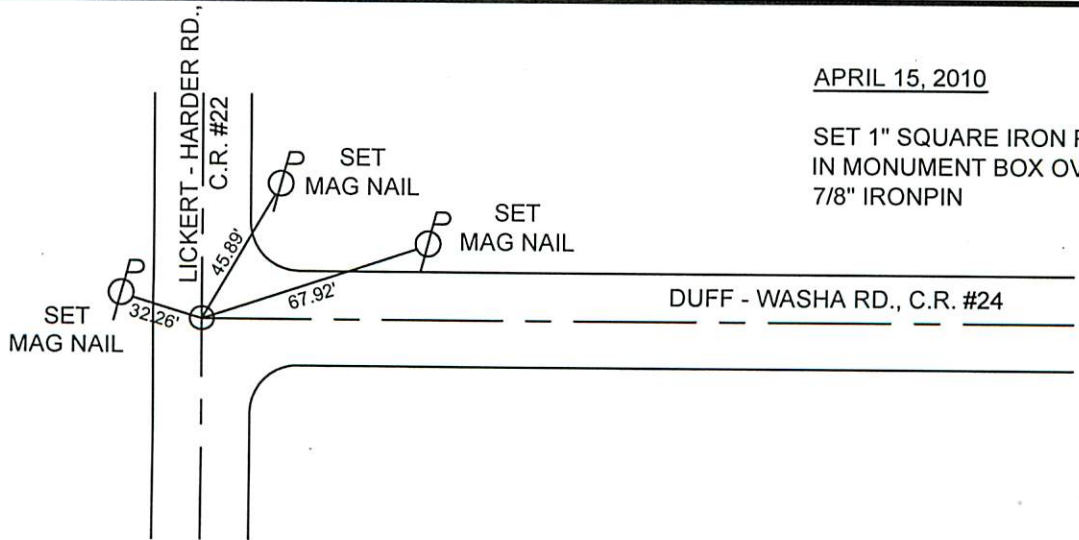
MONUMENT INFORMATION

MONUMENT TYPE: FD. 7/8" Ø IRON PIN  
 ON SURFACE - BELOW: 0.89'  
LEFT - CL PAV'T - RIGHT: 1.30'



MISC. INFORMATION

FD RR SPK 0.30' BELOW SURFACE, TIED WITH X-TIES AND DUG FOR STONE. FD. 7/8" Ø IRON PIN 0.89' BELOW SURFACE. PRODDED AROUND PIN AND DID NOT HIT ANYTHING. IRON PIN MATCHED EXISTING TIES IN STONE RECORD BOOK. USED IRON PIN. RR SPK WAS 0.07'E AND 0.05'S OF PIN.



APRIL 15, 2010

SET 1" SQUARE IRON PIN  
 IN MONUMENT BOX OVER  
 7/8" IRONPIN