

OTTAWA COUNTY ENGINEERS OFFICE

REFERENCE NO. 18-7-14-B
NORTH QUARTER POST SEC 18
BENTON TWP.
SHEET 1 OF 1.

PERSONNEL:
M. WITTMAN, P.S.
J. ALLEN

DATE / WEATHER / TEMP:
MARCH 20, 2009
SUNNY NE
37° F

ROUTE: T-67 TROWBRIDGE RD.

TOWNSHIP: BENTON

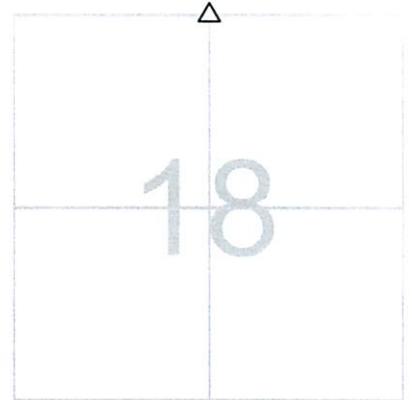
SECTION: 18

T 7 NR 14 E.

NORTHING:

EASTING:

DATUM:



MONUMENT INFORMATION

MONUMENT TYPE: FD DOMED STONE W/ DRILL HOLE
ON SURFACE - BELOW: 1.18'
LEFT - CL PAV'T - RIGHT: 1.50'
RECTANGULAR STONE: 5" x 6"

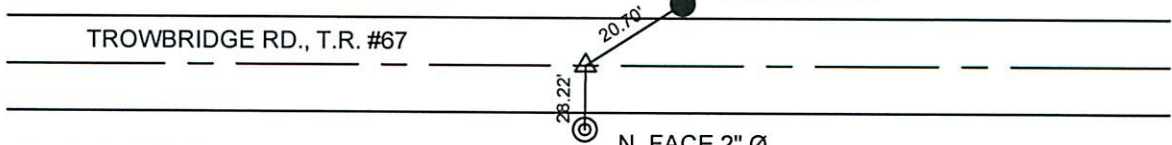


MISC. INFORMATION

MARCH 20, 2009

SET 1" SQUARE IRON PIN
IN MONUMENT BOX OVER
STONE

SET $\frac{5}{8}$ " IRON
PIN w/ OCE CAP
FOR REF. TIE



USING EXISTING PK'S ALSO

PK N - 2.00'
PK E - 2.00'
PK S - 2.00'
PK W - 2.00'

N. FACE 2" Ø
IRON PIPE 2.5'
ABOVE GROUND