

# OTTAWA COUNTY ENGINEERS OFFICE

REFERENCE NO. 17-7-14-1  
SE CORNER SECTION 17  
BENTON TWP.  
SHEET 1 OF 1.

ROUTE: C-19 GRAYTOWN RD.  
@ T-66 MOLINE-MARTIN RD.

TOWNSHIP: BENTON

SECTION: 17

T 7 N R 14 E.

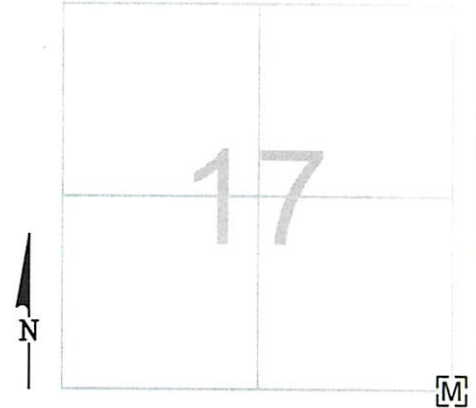
NORTHING:

EASTING:

DATUM:

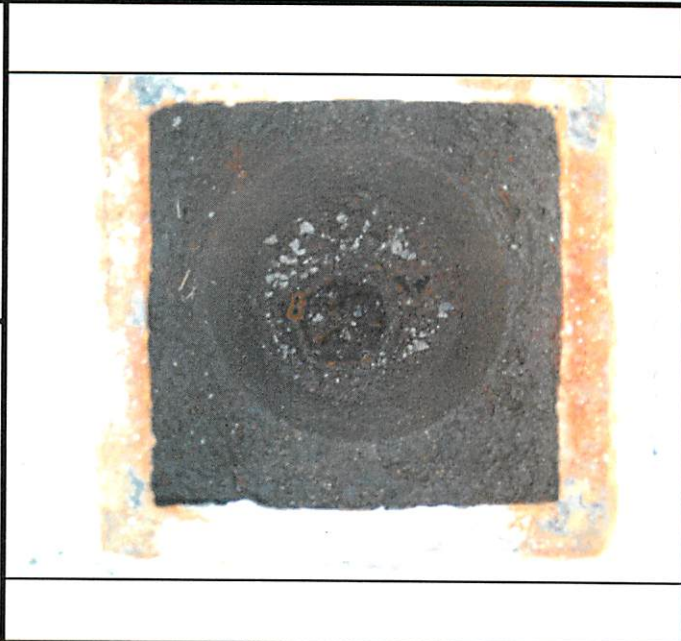
PERSONNEL:  
M. WITTMAN, P.S.  
M. ULLRICH

DATE / WEATHER / TEMP:  
SEPTEMBER 3, 2008  
SUNNY HUMID  
92° F



## MONUMENT INFORMATION

MONUMENT TYPE: FD. 2" O.D. IRON PIPE IN ROUND  
MONUMENT BOX IN SQUARE MONUMENT BOX  
ON SURFACE - BELOW:  
LEFT - CL PAV'T - RIGHT: 4.85'



## MISC. INFORMATION

