

# OTTAWA COUNTY ENGINEERS OFFICE

**REFERENCE NO.** 17-7-14-G  
 SW CORNER POST SECTION 17  
 BENTON TWP.  
**SHEET** 1 OF 1.

**ROUTE:** C-208 ELLISTON-TROWBRIDGE RD.  
 @ T-66 MOLINE MARTIN RD.

**TOWNSHIP:** BENTON

**SECTION:** 17

**T** 7 **NR** 14 **E.**

**NORTHING:**

**EASTING:**

**DATUM:**



**PERSONNEL:**

R. NUHFER, P.S.  
 M. BROUGH  
 K. MOORE  
 R. LAJTI  
 N. SANTOYA

**DATE / WEATHER / TEMP:**

JULY 11, 2002  
 SUNNY  
 78° F

MONUMENT INFORMATION

MONUMENT TYPE: FD LIMESTONE  
 ON SURFACE - BELOW: 1.08'  
 LEFT - CL PAV'T - RIGHT:  
 RECTANGULAR STONE: 2 1/2" x 5" (TOP)

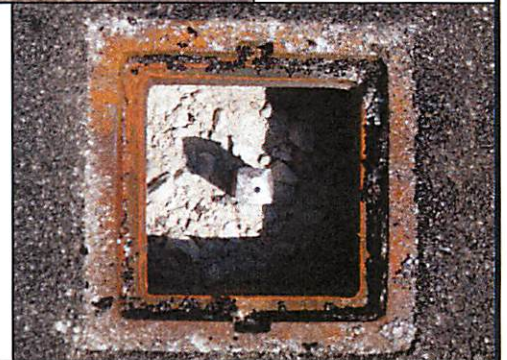
USED FD DRILL HOLE



MISC. INFORMATION

STONE WAS REMOVED IN JULY 2011 DURING  
 X-OVER REPLACEMENT PROJECT.

RESET 1" SQUARE IRON PIN IN CONCRETE ON  
 JULY 22, 2011, MW, JA, JL.

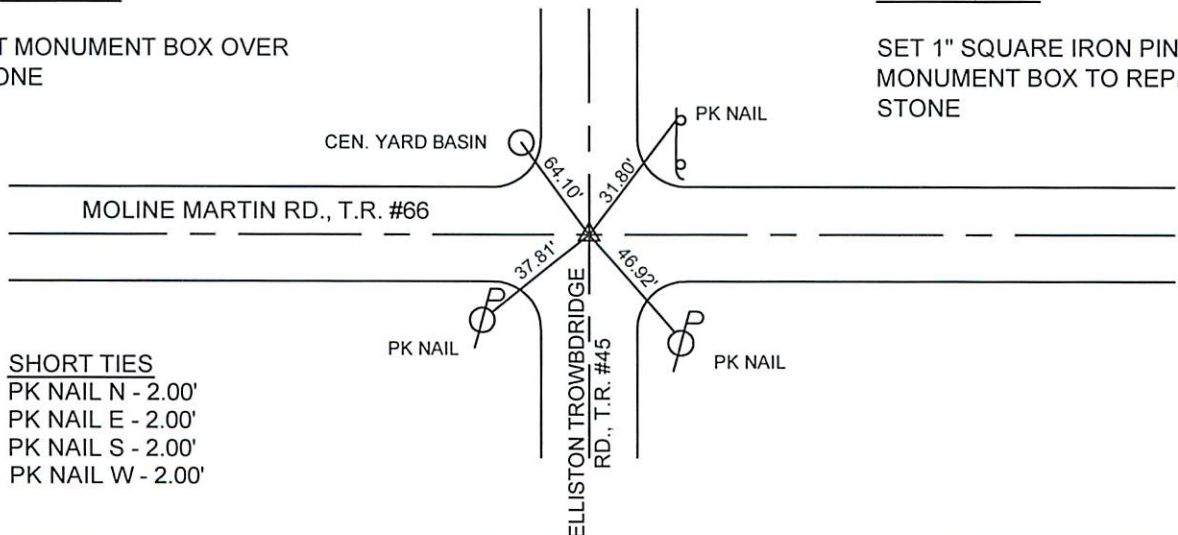


JULY 11, 2002

SET MONUMENT BOX OVER  
 STONE

JULY 22, 2011

SET 1" SQUARE IRON PIN IN  
 MONUMENT BOX TO REPLACE  
 STONE



SHORT TIES  
 PK NAIL N - 2.00'  
 PK NAIL E - 2.00'  
 PK NAIL S - 2.00'  
 PK NAIL W - 2.00'